



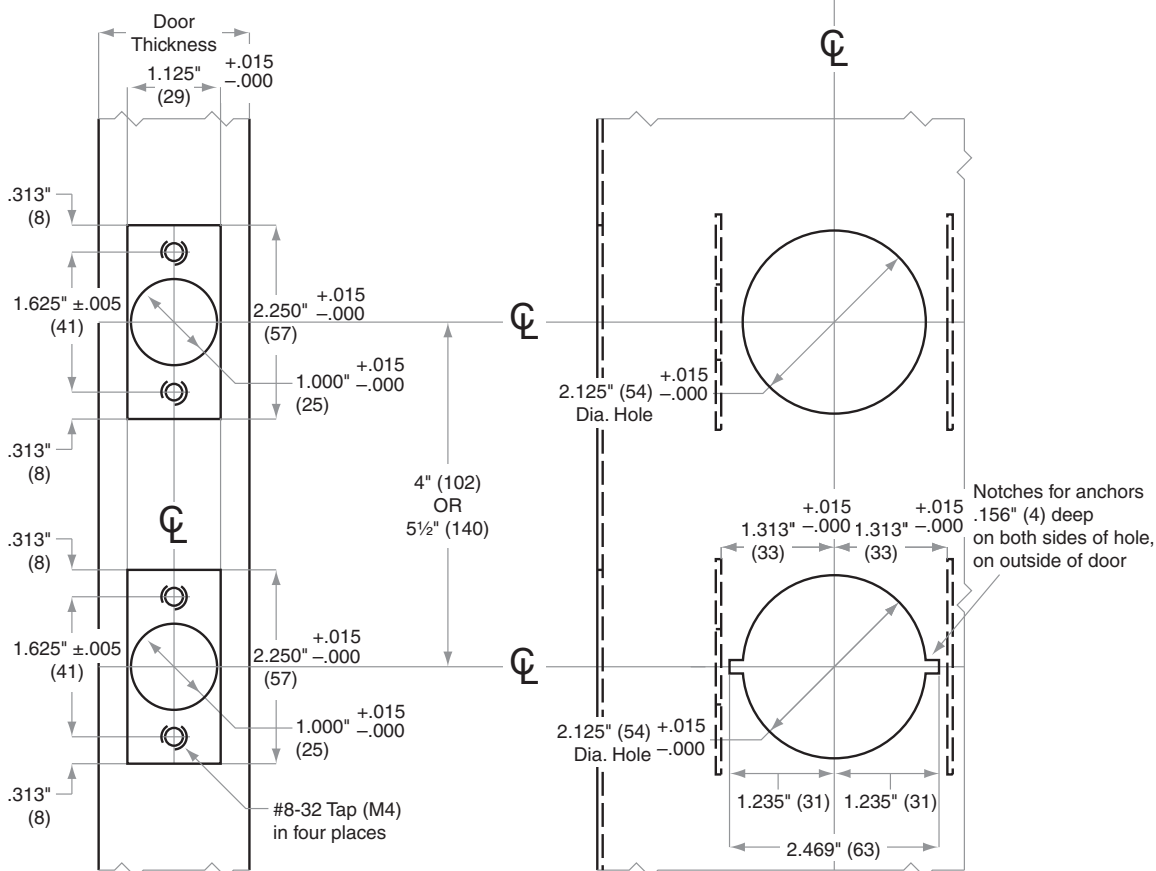
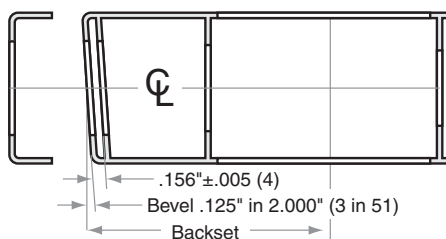
# CS-Series

## Model CS210



Door Type: Metal, Flat or Beveled  
 Door Thickness: 1¾" (44 mm) – 2" (51 mm)  
 Faceplate: Square Corner, 1⅞" (29 mm)  
 Backsets: 2¾" (60 mm), 2¾" (70 mm)

For metal door installations suitable reinforcement is required to support latch in center of door and to prevent lateral movement.



Dimensions shown in parentheses ( ) are in millimeters.

Door preparation template