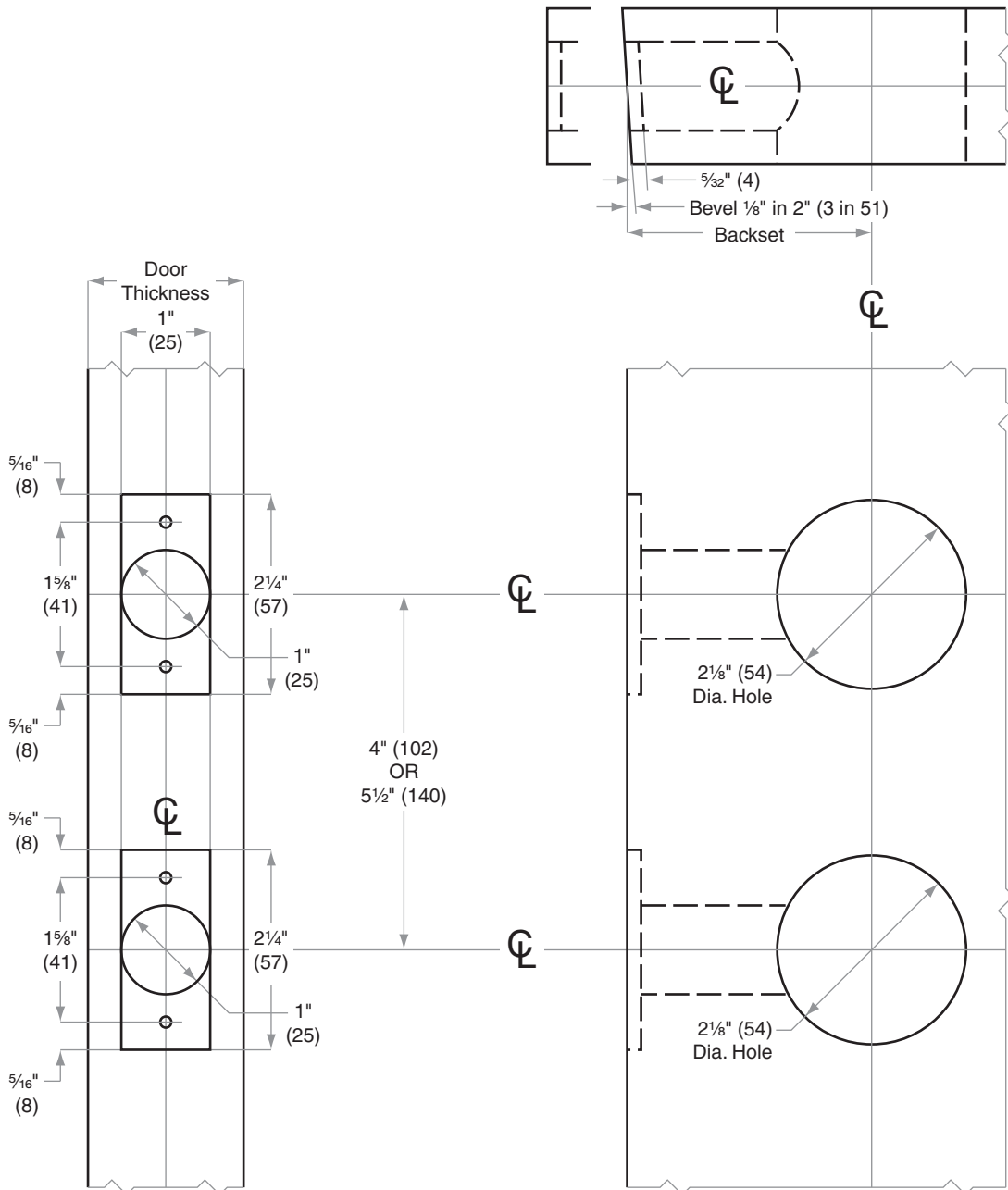




# CS-Series

## Model CS210

Door Type: Wood or Composite, Flat or Beveled  
Door Thickness: 1 3/4" (44 mm)–2" (51 mm)  
Faceplate: Square Corner, 1" (25 mm) wide  
Backsets: 2 3/8" (60 mm), 2 3/4" (70 mm)



Dimensions shown in parentheses ( ) are in millimeters.

Door preparation template