



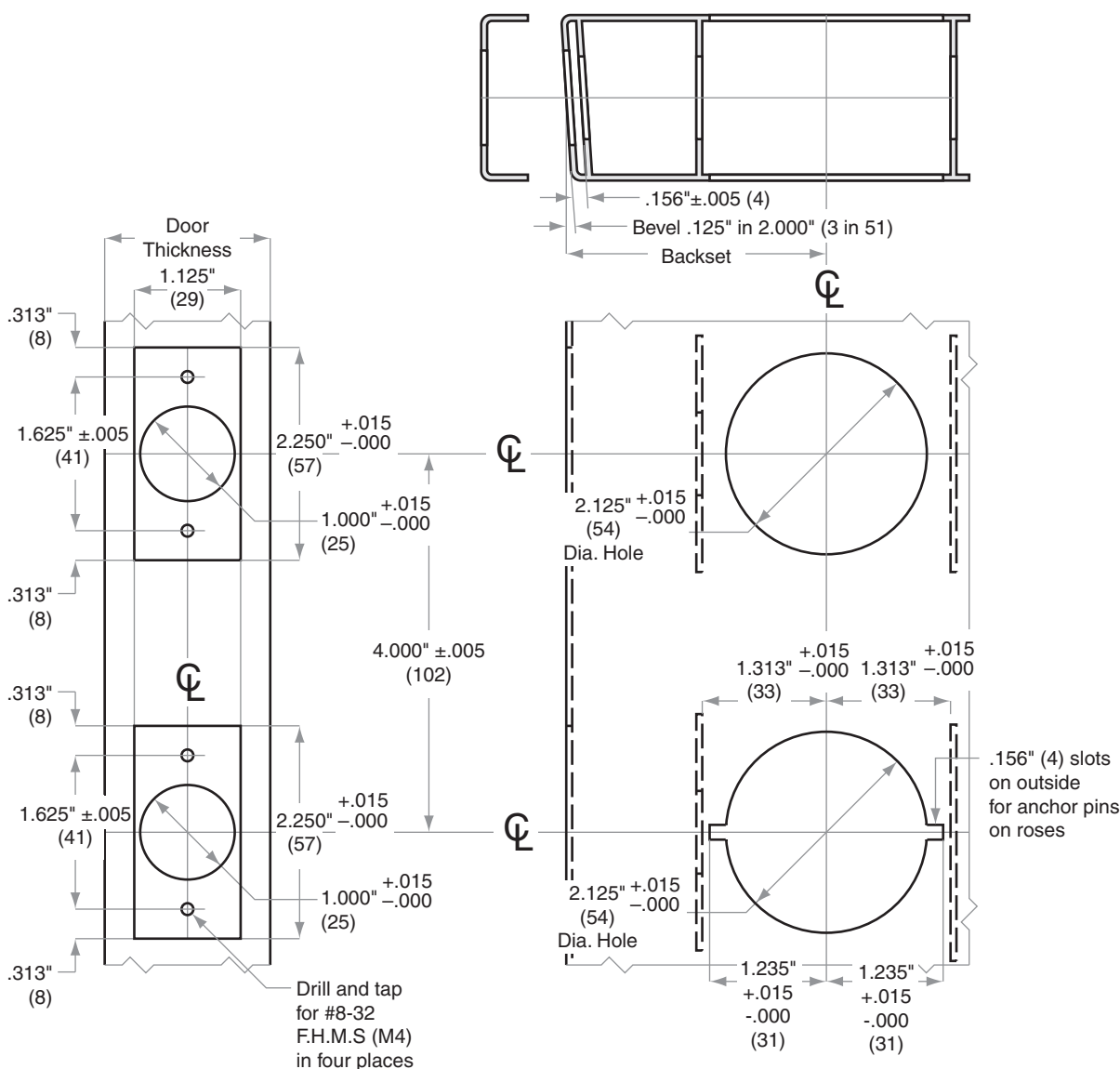
H-Series

H110H, H153H, H180H, H185H

Door Type: Metal, Flat or Beveled
 Door Thickness: $1\frac{3}{8}$ " (35 mm)– $1\frac{3}{4}$ " (44 mm)
 Faceplate: Square Corner, $1\frac{1}{8}$ " (29 mm) wide
 Backsets: $2\frac{3}{8}$ " (60 mm) | $2\frac{3}{4}$ " (70 mm)

For metal door installations, suitable reinforcement is required to support latch in center of door to prevent lateral movement

This template is for use with the adapter ring for a $2\frac{1}{8}$ " (54) prepped hole, both upper and lower



Dimensions shown in parentheses () are in millimeters.

Door preparation template

H874