

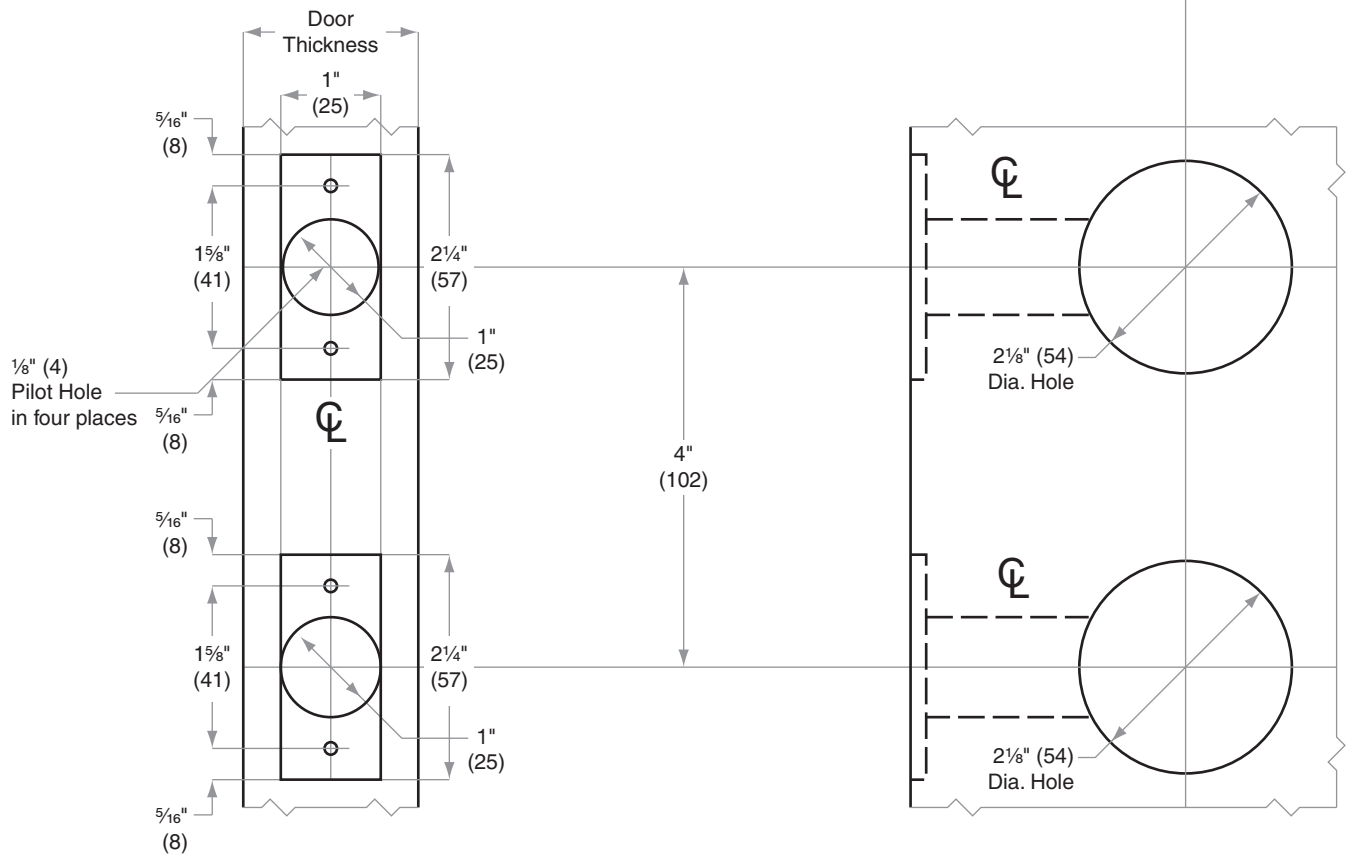
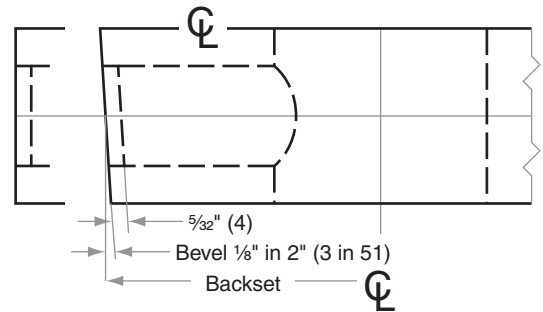


H-Series

H110H, H153H, H180H, H185H

- Door Type: Wood or Composite, Flat or Beveled
- Door Thickness: 1 $\frac{3}{8}$ " (35 mm)–1 $\frac{3}{4}$ " (44 mm)
- Faceplate: Square Corner, 1" (25 mm) wide
- Backsets: 2 $\frac{3}{8}$ " (60 mm) | 2 $\frac{3}{4}$ " (70 mm)

This template is for use with the adapter ring for a 2 $\frac{1}{8}$ " (54) prepped hole, both upper and lower



Dimensions shown in parentheses () are in millimeters.

Door preparation template

H769