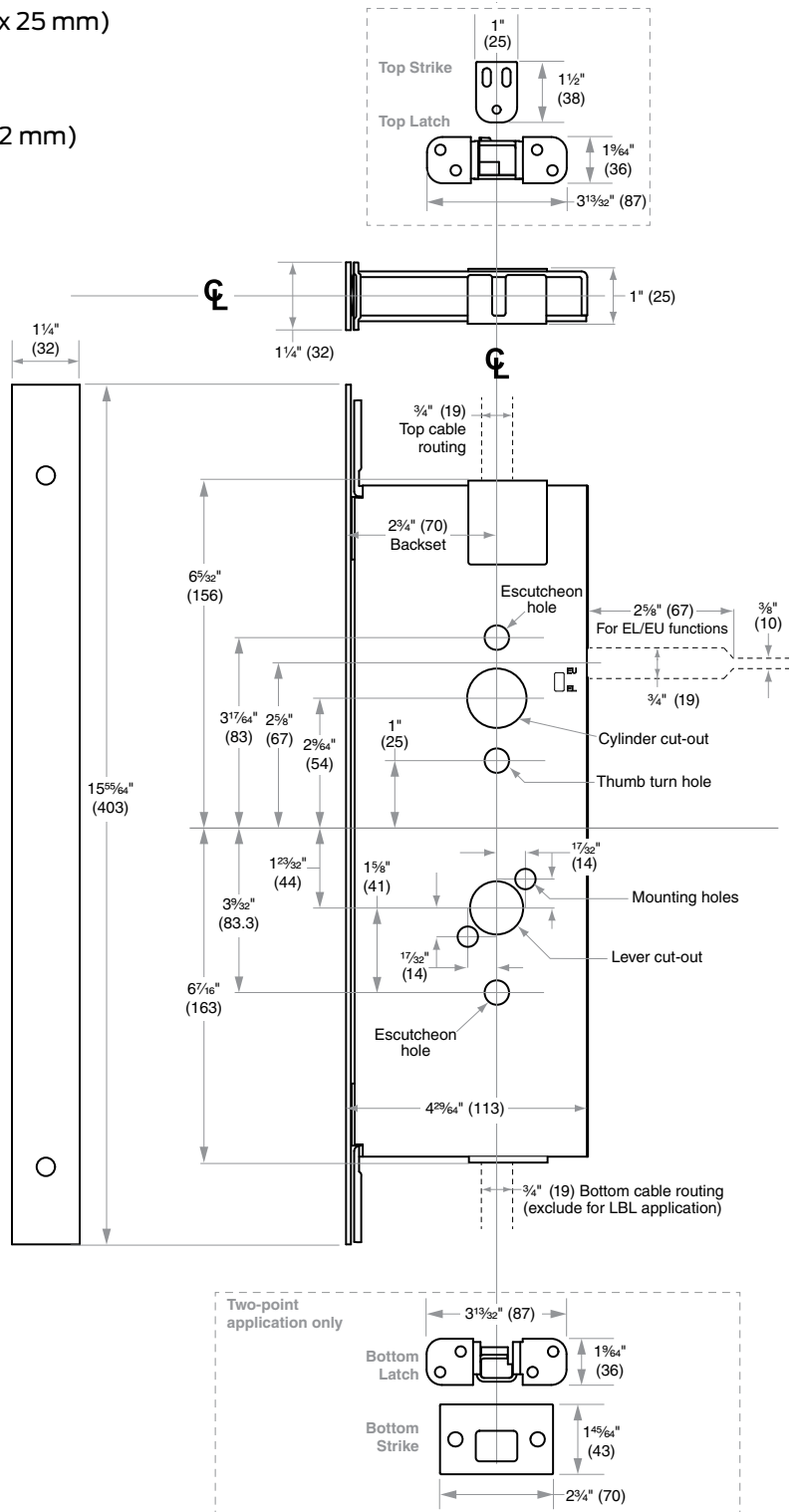




LM9200-Series

Lock Case Dimensions

- Case Size: 4²⁹/₆₄" x 12¹⁹/₃₂" x 1" (113 mm x 319 mm x 25 mm)
- Backset: 2³/₄" (70 mm)
- Door Range: 1³/₄" – 2¹/₂" (44 mm–64 mm)
- Lock Front: 1¹/₄" x 15⁷/₈" x 3³/₃₂" (32 mm x 403 mm x 2 mm)
- Lever to Cylinder: 3⁵⁵/₆₄" (98 mm)
- Lever to Turn Piece: 2²³/₃₂" (69 mm)



NOTES:

- Dimensions are maximum for the product.
- Templates are not to scale.
- Dimensions do not provide allowances for door silencers, weather stripping, sound proofing or other additions to door or door frames.
- Door undercut should be appropriate to achieve desired clearance. Clearance is the the space between the bottom of the door and the top of the floor material. Maximum clearance for fire rated doors is 3/4". Refer to NFPA 80 for more information. For non-fire rated doors, determine appropriate clearance for site.

ANSI Standards:

LM9200-Series locks meet all requirements for installations in doors and frames prepared in accordance with ANSI specifications A 156.37, 2014.

Electrified Locks:

Provisions must be made to route low voltage wire to the lock. Power transfer unit and low voltage wiring are not furnished.

Dimensions shown in parentheses () are in millimeters.

DRAWING IS NOT TO SCALE!
Customer service: 877-671-7011

We can help you find the correct guide for your product and application!

Door preparation template

