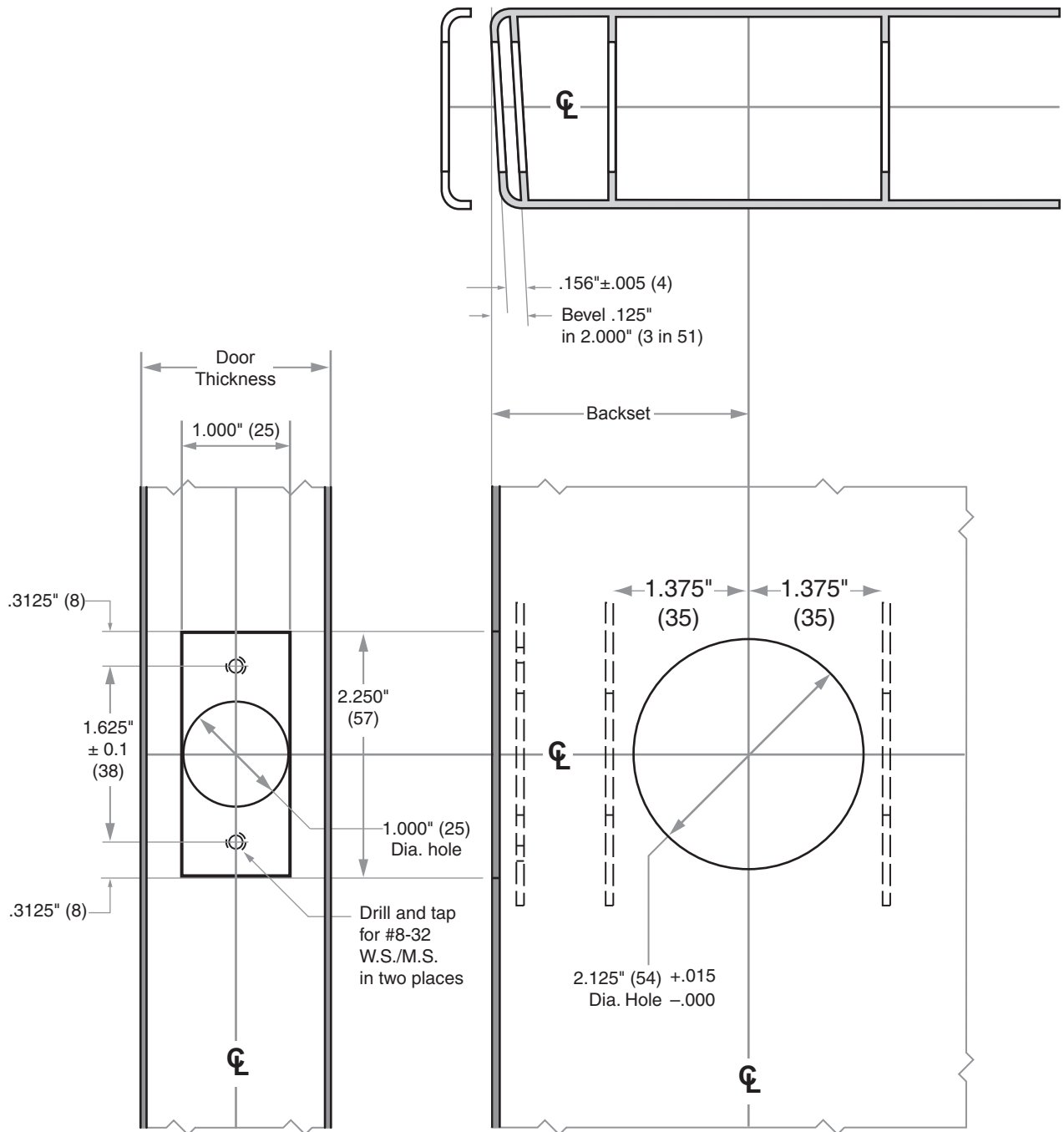




LT-Series

Model LT10, LT40

Door Type: Metal, Flat or beveled
 Door Thickness: 1 3/8" (35 mm)–2" (51 mm)
 Faceplate: Square Corner, 1" (25 mm) wide
 Backsets: 2 3/8" (60 mm)



Dimensions shown in parentheses () are in millimeters.

Door preparation template