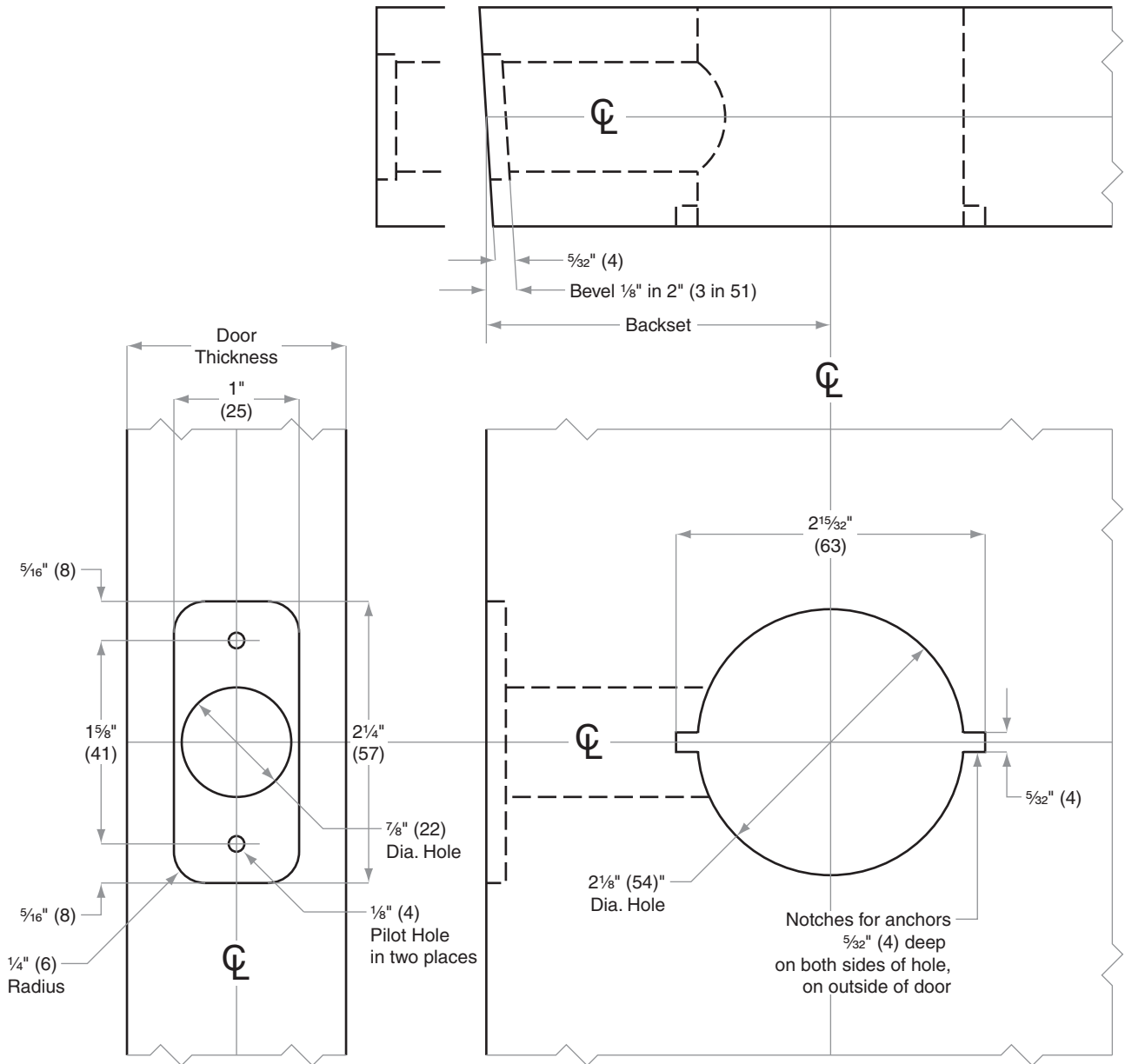




# S-Series

## Models S10-S80

- Door Type:** Wood or Composite, Flat or Beveled  
**Door Thickness:** 1 3/8" (35 mm)–2" (51 mm) except S40D: 1 3/8" (35 mm)–1 7/8" (47 mm)  
**Faceplate:** Round Corner, 1/4" (6 mm) Radius, 1" (25 mm) wide  
**Backsets:** 2 3/8" (60 mm), 2 3/4" (70 mm), 5" (127 mm)



Dimensions shown in parentheses ( ) are in millimeters.

Door preparation template