

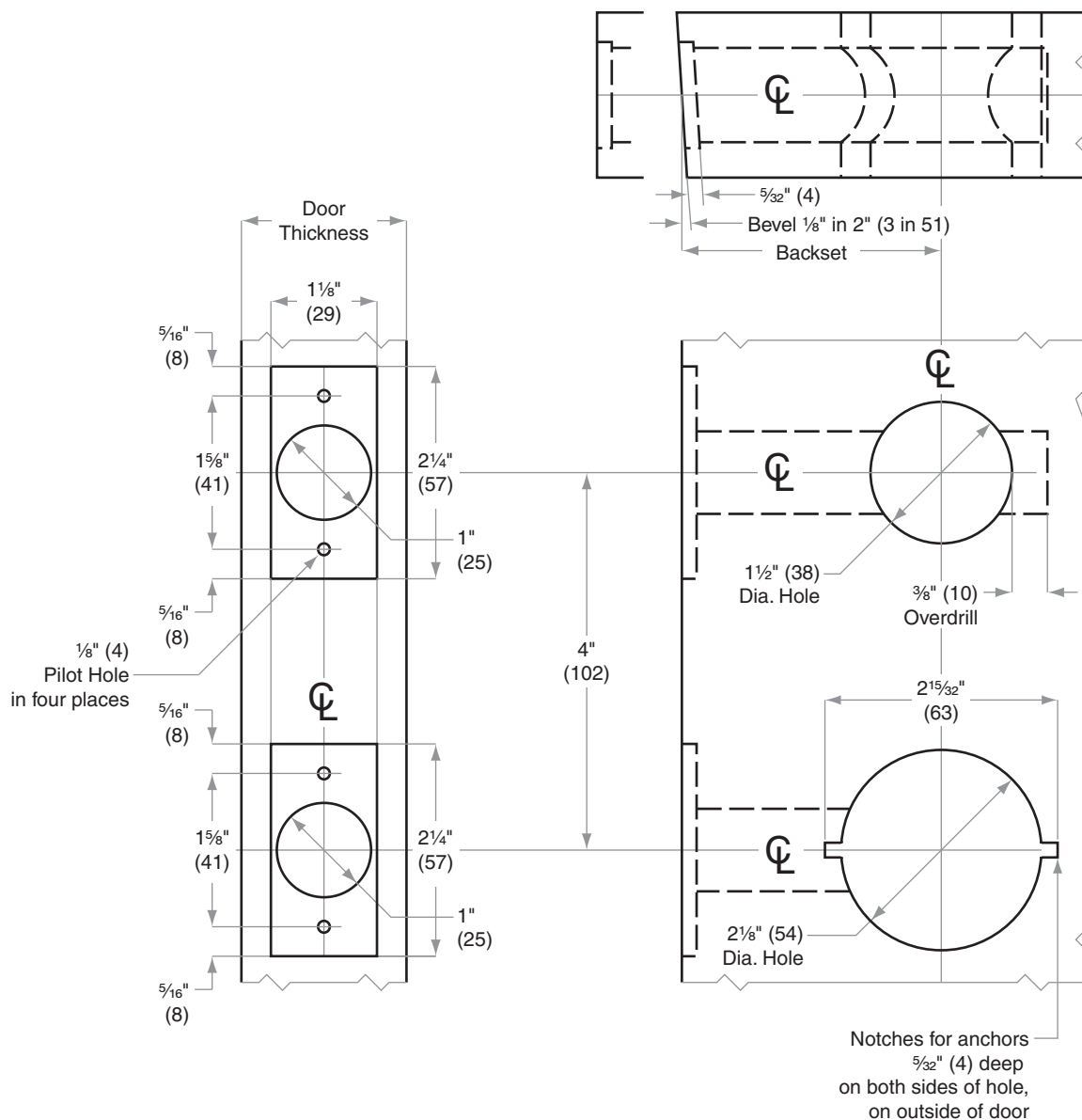


S200-Series

Models S210, S251, S270, S280

Door Type: Wood or Composite, Flat or Beveled
Door Thickness: 1 3/8" (35 mm)–2" (51 mm)
Faceplate: Square Corner, 1 1/8" (29 mm) wide
Backsets: 2 3/8" (60 mm), 2 3/4" (70 mm), 5" (127 mm)

Strikes located 4" (102) Centerline to Centerline, same as Latch and Bol



Dimensions shown in parentheses () are in millimeters.

Door preparation template