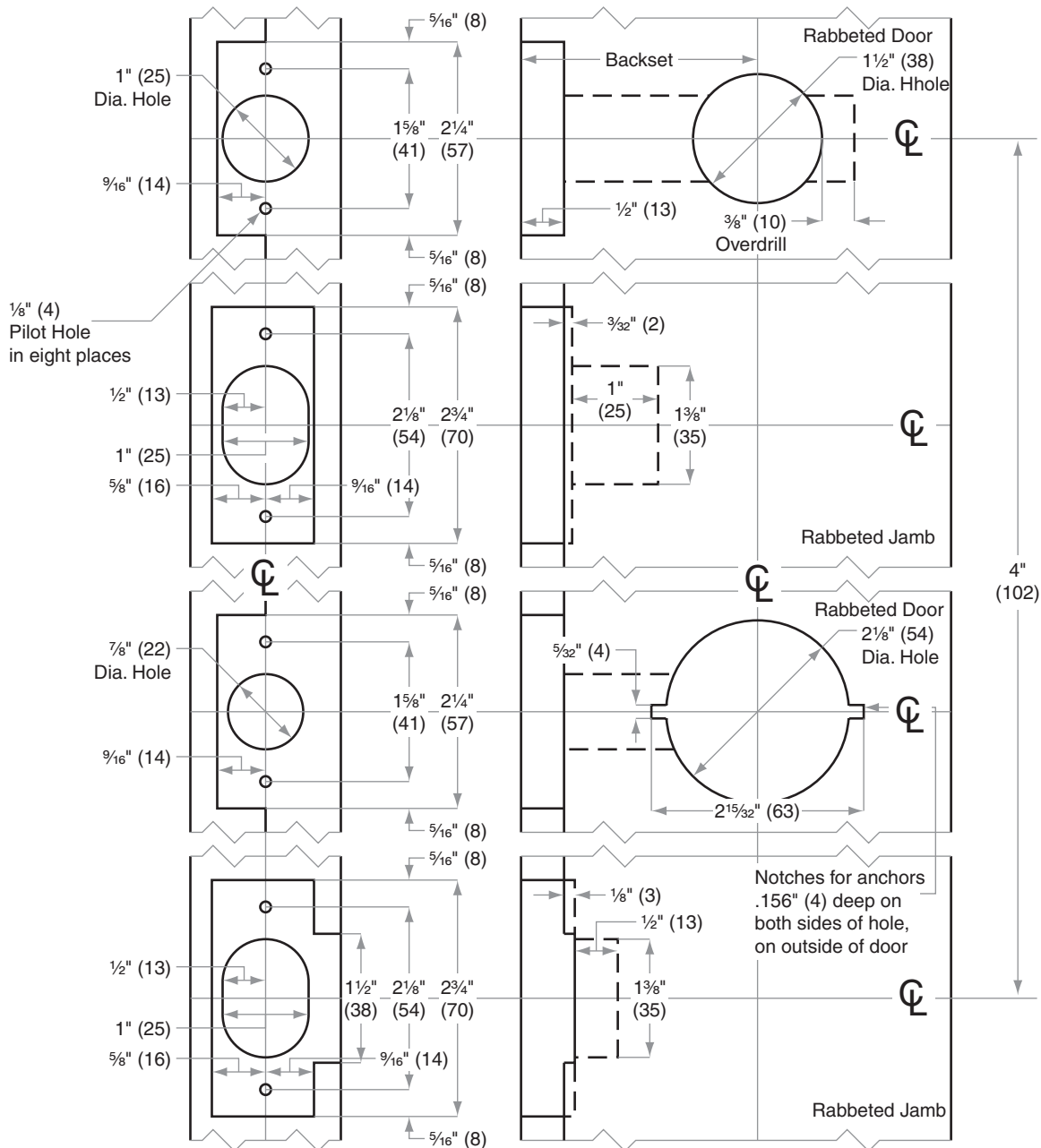




# S200-Series

Models S210, S251, S270, S280

- Door Type: Wood or Composite, rabbeted, flat
- Door Thickness: 1 3/8" (35 mm)–2" (51 mm)
- Faceplate: Square Corner, 1" (25 mm) width, 1/2" (6 mm) rabbeted and strike
- Backsets: 2 3/8" (60 mm), 2 3/4" (70 mm), 5" (127 mm)



Dimensions shown in parentheses ( ) are in millimeters.

Door preparation template