



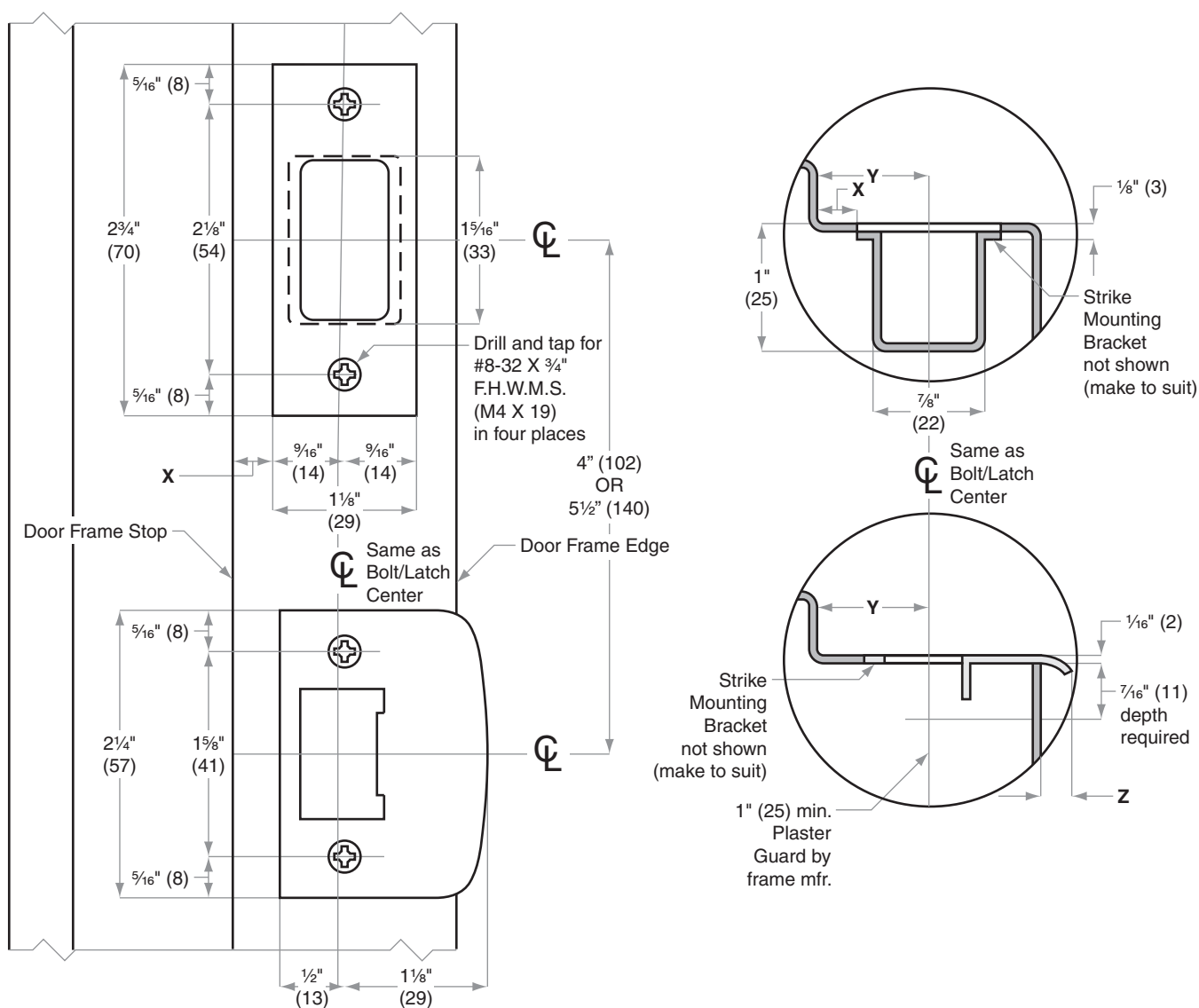
Strikes, Combination

Model 10-121 =10-094x10-026

Jamb Type: Metal
Style: Combo Square corner, box 1 1/8" x 2 3/4", Square corner, full lip 1 5/8" x 2 1/4"
Standard for: FE210F, RS210F, CS210
Optional for:

NOTES:

1. Dimensions X, Y and Z are variables dependent on door thickness.
2. Curved strike extension beyond jamb at Z must not be less than 3/16" (5) to ensure proper functioning of latch bolt.
3. Strike location on frames must be adjusted for thickness of door silencers when used.



Dimensions shown in parentheses () are in millimeters.

Door preparation template