

**360-L-DT Control for Back to Back
Mounting w/ 330/350 Push Bar Trim**

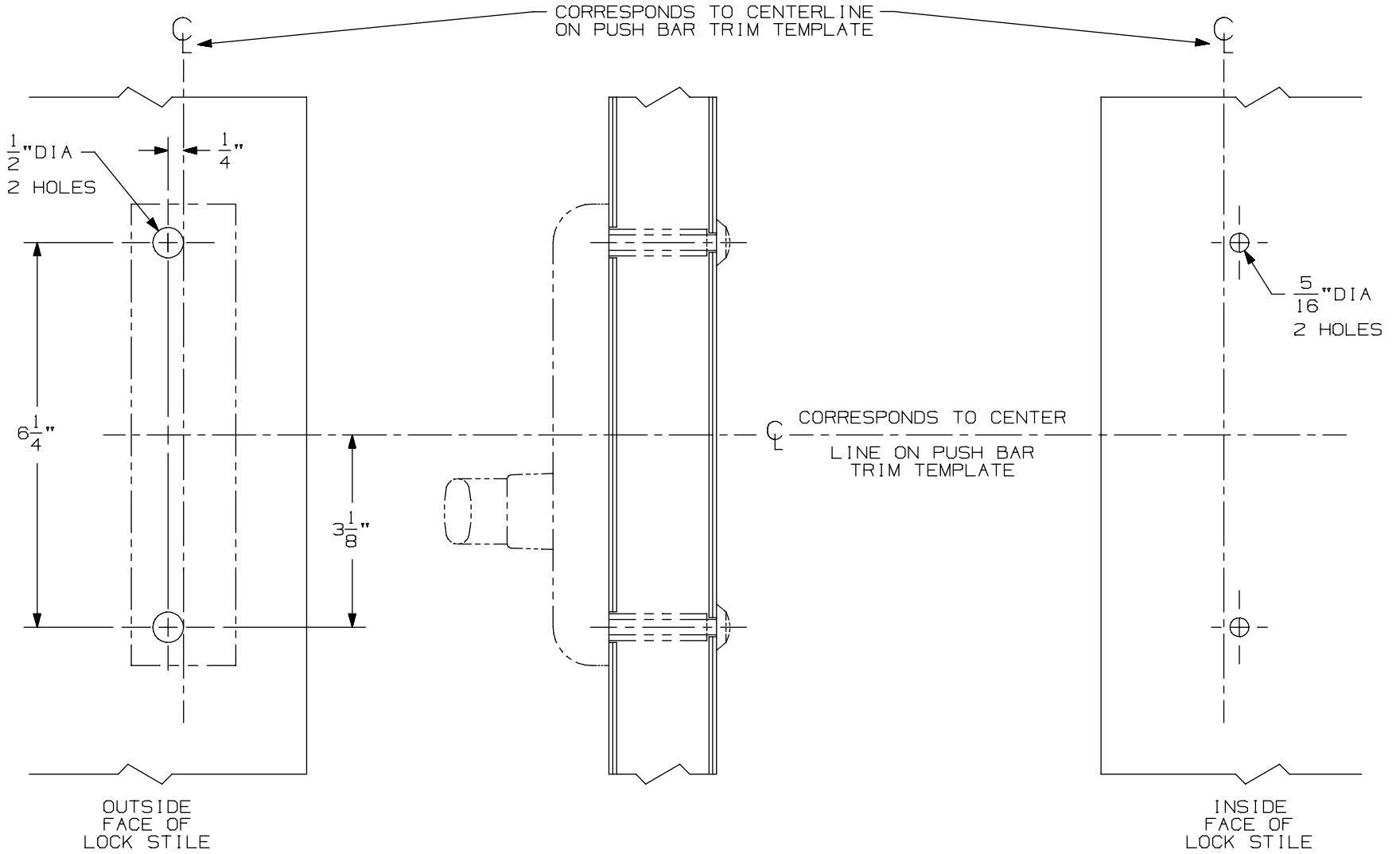
NOTES: SEE MASTER SHEET #10001 FOR SUGGESTED REINFORCING

TEMPLATE
NUMBER:

40082_a

DATE:
05-28-13

VON DUPRIN®



LHR SHOWN
RHR OPPOSITE