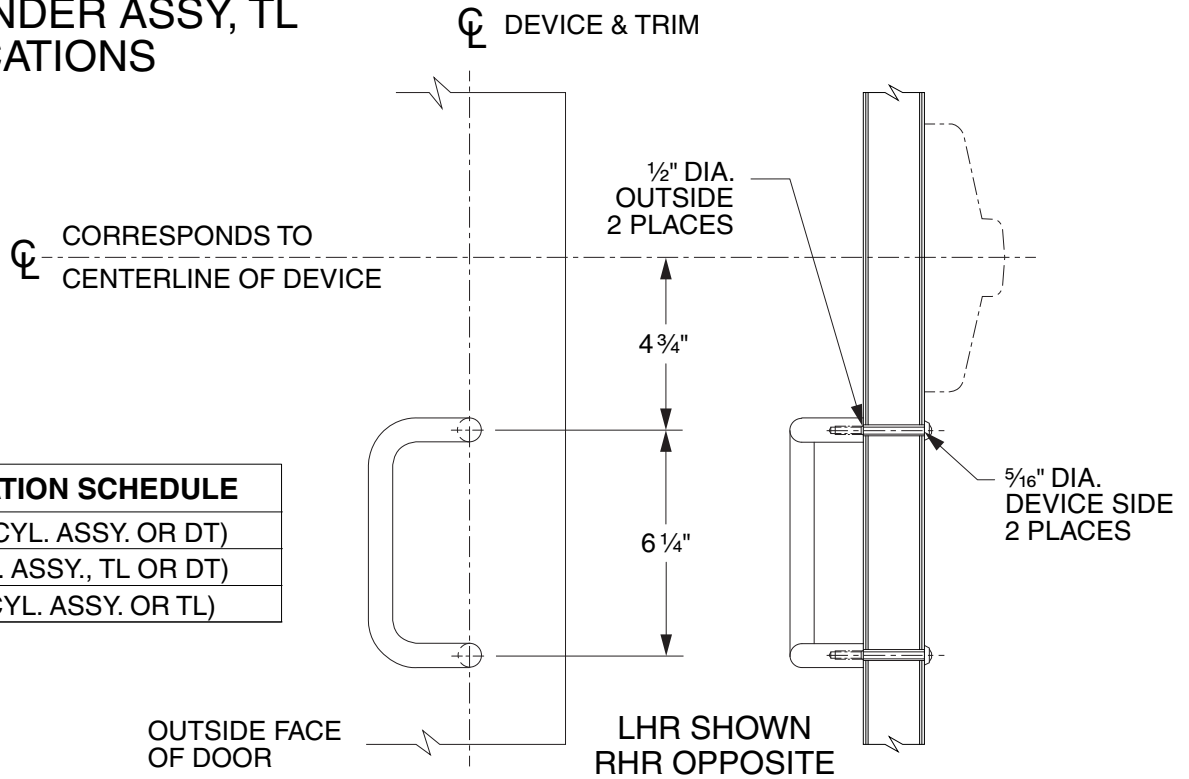


392-6 (PULL BELOW CENTER)

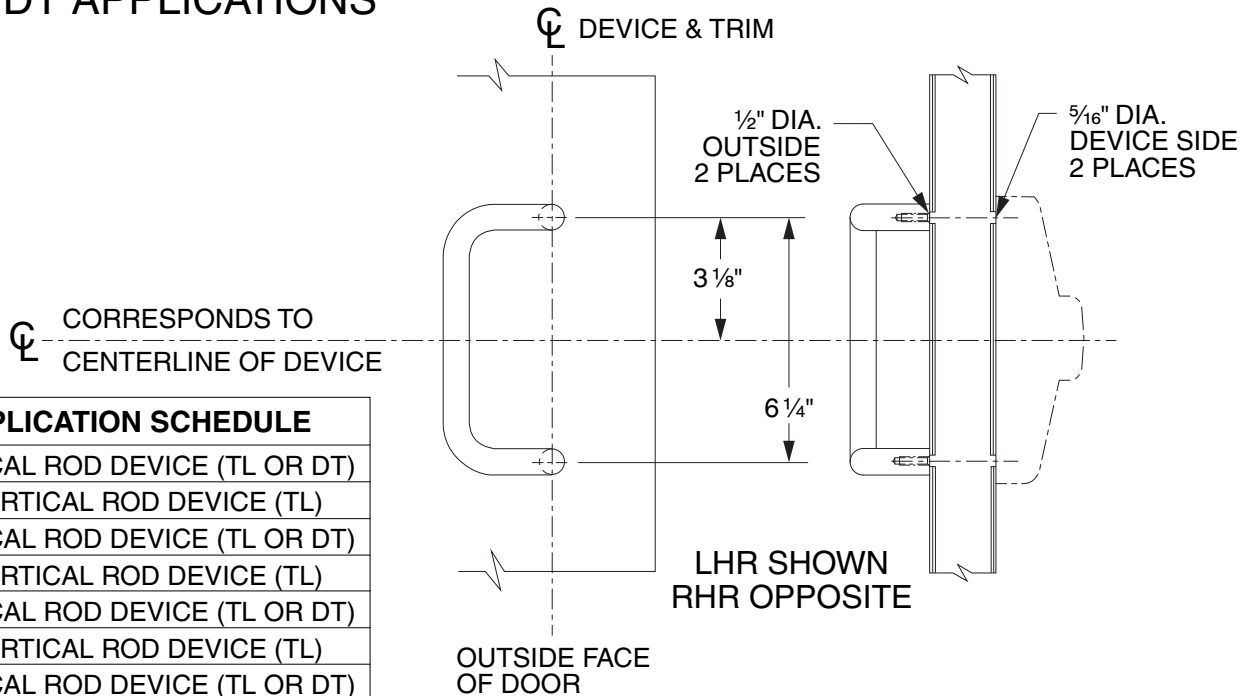
FOR 388 CYLINDER ASSY, TL OR DT APPLICATIONS



DEVICE APPLICATION SCHEDULE
33A/35A RIM (388 CYL. ASSY. OR DT)
33/3527A (388 CYL. ASSY., TL OR DT)
33/3527A-F (388 CYL. ASSY. OR TL)

392-6 (PULL ON CENTER)

FOR TL OR DT APPLICATIONS



DEVICE APPLICATION SCHEDULE
33/3527A VERTICAL ROD DEVICE (TL OR DT)
33/3527A-F VERTICAL ROD DEVICE (TL)
33/3547A VERTICAL ROD DEVICE (TL OR DT)
33/3547A-F VERTICAL ROD DEVICE (TL)
33/3548A VERTICAL ROD DEVICE (TL OR DT)
33/3548A-F VERTICAL ROD DEVICE (TL)
33/3549A VERTICAL ROD DEVICE (TL OR DT)
33/3549A-F VERTICAL ROD DEVICE (TL)

392-6 PULL

VON DUPRIN

NOTES: SEE MASTER SHEET #10001 FOR SUGGESTED REINFORCING

TEMPLATE NUMBER:

20454_c

DATE: 05-31-13