

⑥ LHR LATCH APPLICATION SHOWN
RHR OPPOSITE

SEE SHEET #2 FOR
APPLICATION SCHEDULE

NOTE:
ACTUAL STRIKE
DIMENSIONS SHOWN

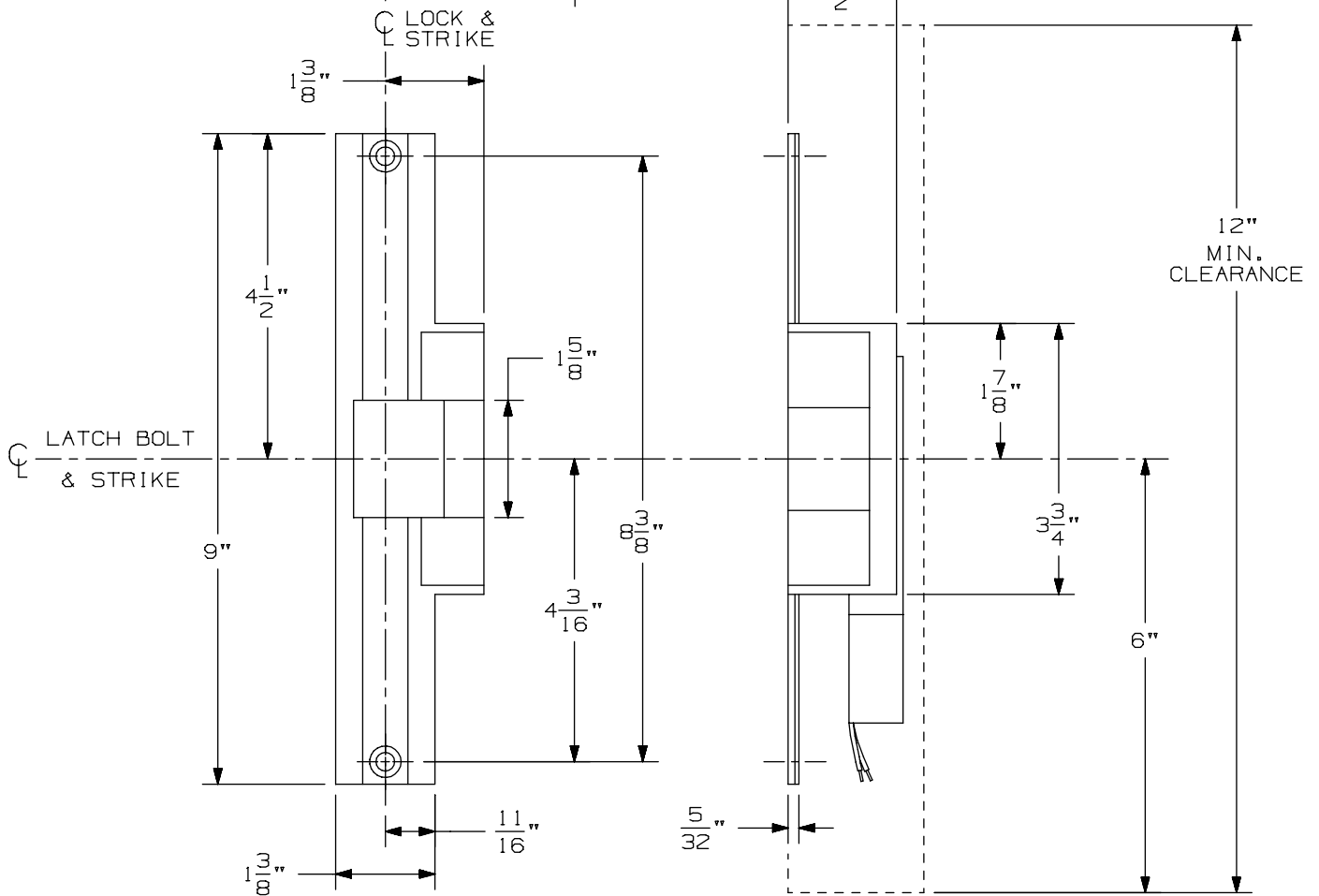
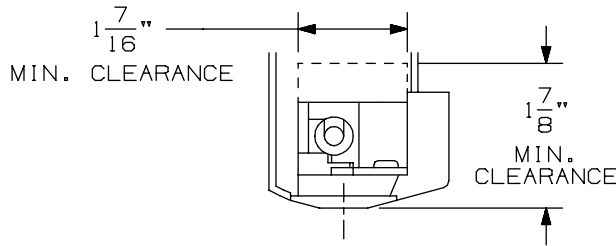
REINFORCE FOR
STRIKE ATTACHMENT
AS REQUIRED

#12-24 TAP
2 HOLES

CL STRIKE

SUGGESTED
CUTOUT

RHR DOOR SHOWN
INACTIVE



6224AL Electric Strike
Aluminum Double Door

VON DUPRIN®

NOTES: SEE MASTER SHEET #10001 FOR SUGGESTED REINFORCING

TEMPLATE NUMBER: 30242_a Sht 1

DATE: 05-28-13

6224AL ELECTRIC STRIKE
ALUMINUM DOUBLE DOOR APPLICATION
MORTISE/CYLINDRICAL APPLICATION SCHEDULE

| PRODUCT MANUFACTURER | PRODUCT APPLICATION | THROW |
|----------------------|------------------------|-------------|
| VON DUPRIN | 7500 MORTISE | 3/4" |
| ADAMS RITE | 4510 MORTISE | 1/2" |
| ADAMS RITE | 4710 MORTISE | 5/8" |
| BALDWIN | 6000 MORTISE | 3/4" |
| BEST | 24H, 30 SERIES MORTISE | 3/4" |
| CORBIN/RUSSWIN | ML2200 SERIES MORTISE | 3/4" |
| FALCON | M2300, M2500, M2600 | 3/4" |
| FALCON | M3300, M3500, M3600 | 5/8" |
| MONARCH | 18-M MORTISE | 3/4" |
| PRECISION | MORTISE | 3/4" |
| SARGENT | 7800/8200 MORTISE | 3/4" |
| SARGENT | 6500/8100 MORTISE | 3/4" |
| SARGENT | 900 MORTISE LOCK | 3/4" |
| SCHLAGE | L9000 MORTISE | 3/4" |
| YALE | 8600 MORTISE | 5/8" |
| YALE | 8700 MORTISE | 3/4" |
| BALDWIN | CYLINDRICAL | 1/2" - 3/4" |
| BEST | CYLINDRICAL | 3/8" - 3/4" |
| CORBIN | CYLINDRICAL | 1/2" - 3/4" |
| FALCON | CYLINDRICAL | 1/2" - 3/4" |
| RUSSWIN | CYLINDRICAL | 1/2" - 3/4" |
| SARGENT | CYLINDRICAL | 1/2" - 3/4" |
| SCHLAGE | CYLINDRICAL | 3/8" - 3/4" |
| YALE | CYLINDRICAL | 1/2" - 3/4" |

NOTES:

1. DEADLATCH NOT GUARANTEED ON CYLINDRICAL APPLICATIONS.
2. MONITORING COULD BE AFFECTED BY DOOR/FRAME PREPARATION.
3. SIGNAL TRIPPER FUNCTION WITH 3/8" THROW BOLTS IS NOT RECOMMENDED.
4. NO DEADBOLT ACTION AVAILABLE FOR MORTISE APPLICATIONS.

REPLACES:

FOLGER-ADAMS 310-2 RF

**6224AL Electric Strike
Aluminum Double Door**

VON DUPRIN®

NOTES: SEE MASTER SHEET #10001 FOR SUGGESTED REINFORCING

TEMPLATE NUMBER: **30242_a Sht 2**

DATE: 05-28-13