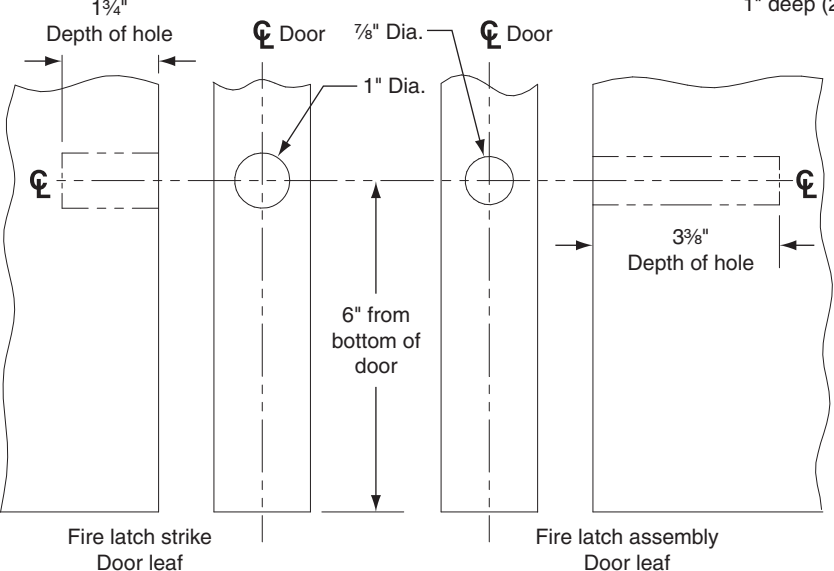
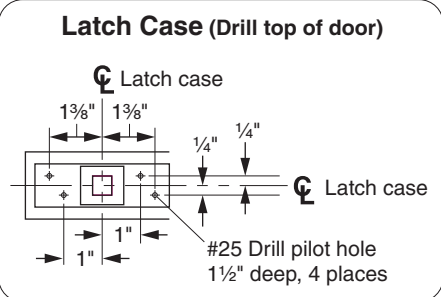


- Fire barrier and intumescent is required. See instruction 24739476 for details.



33/3550AWDC-LBL
 33/3550AWDC-F-LBL (20-MINUTE WOOD DOOR APPLICATION)
 CONCEALED VERTICAL DEVICE

VON DUPRIN®

TEMPLATE NUMBER: 972878-00_c DATE: 3-30-16