

APPLICATION	PREPARATION
SURFACE APPLICATION	#10-24 TAP - 4 PLACES
99D TRIM APPLICATION	1/4 DIA. THIS SIDE
SEX BOLT APPLICATION (SEE NOTE 1)	13/32 DIA. OPPOSITE SIDE - 4 PLACES

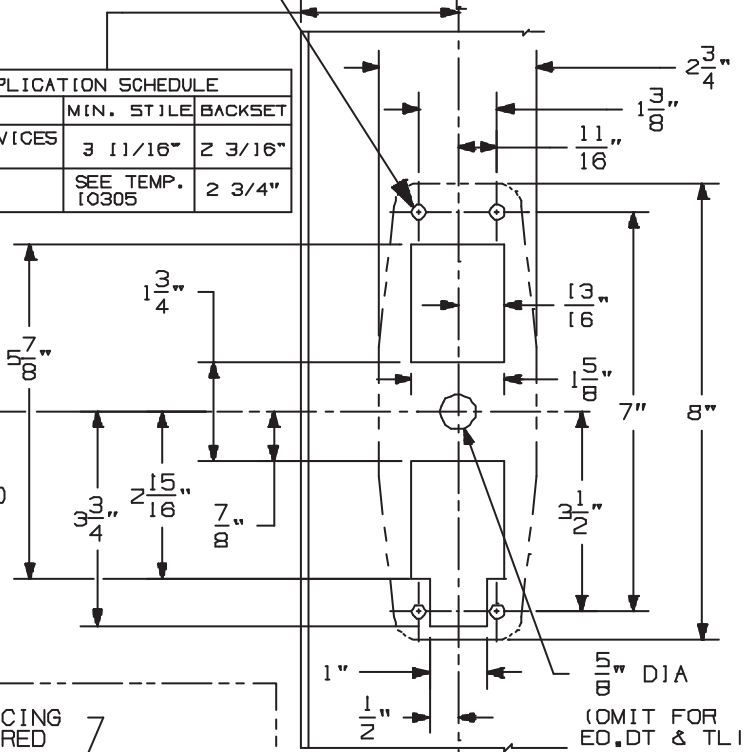
NOTE 1: THESE 4 HOLES TO BE PREPARED FOR SURFACE APPLICATION (#10-24 TAP) WHEN USING 696/697 TRIM. DO NOT PREPARE FOR SEX BOLTS

DEVICE APPLICATION SCHEDULE		
INSTALLATION	MIN. STILE	BACKSET
TWO VERT. ROD DEVICES OR SINGLE DOOR	3 11/16"	2 3/16"
VERTICAL ROD & MORTISE DEVICE	SEE TEMP. 10305	2 3/4"

BOTTOM LATCH CASE APPLICATION SAME AS TOP LATCH CASE APPLICATION

MINIMUM LATCH CASE WIDTH

1 3/8"



39 5/8" TO FINISHED FLOOR

REINFORCING REQUIRED

STOP HEIGHT

INSIDE FACE OF LOCK STILE LHR DOOR

* 1/4" UNDERCUT REQUIRED FOR 9947 DEVICE. 3/4" UNDERCUT FOR 9948 DEVICE.

385-A OR 304-L STRIKE APPLICATION

THRESHOLD APPLICATION

PREP AT BOTTOM SAME AS TOP

LHR SHOWN RHR OPPOSITE

NOTE: IT IS RECOMMENDED THE MOUNTING HOLES BE PREPARED IN THE FIELD FOR OUTSIDE TRIM PREPARATION, WHEN REQUIRED SEE ADDITIONAL TRIM TEMPLATE

LATCH CASE & DEVI CE

FRAME AT TOP

#10-24 TAP 2 HOLES

98/9947 & 98/9948 Series Concealed Vertical Rod Device

VON DUPRIN®

NOTES: SEE MASTER SHEET #10001 FOR SUGGESTED REINFORCING

TEMPLATE NUMBER:

10320_c

DATE: 05-21-13