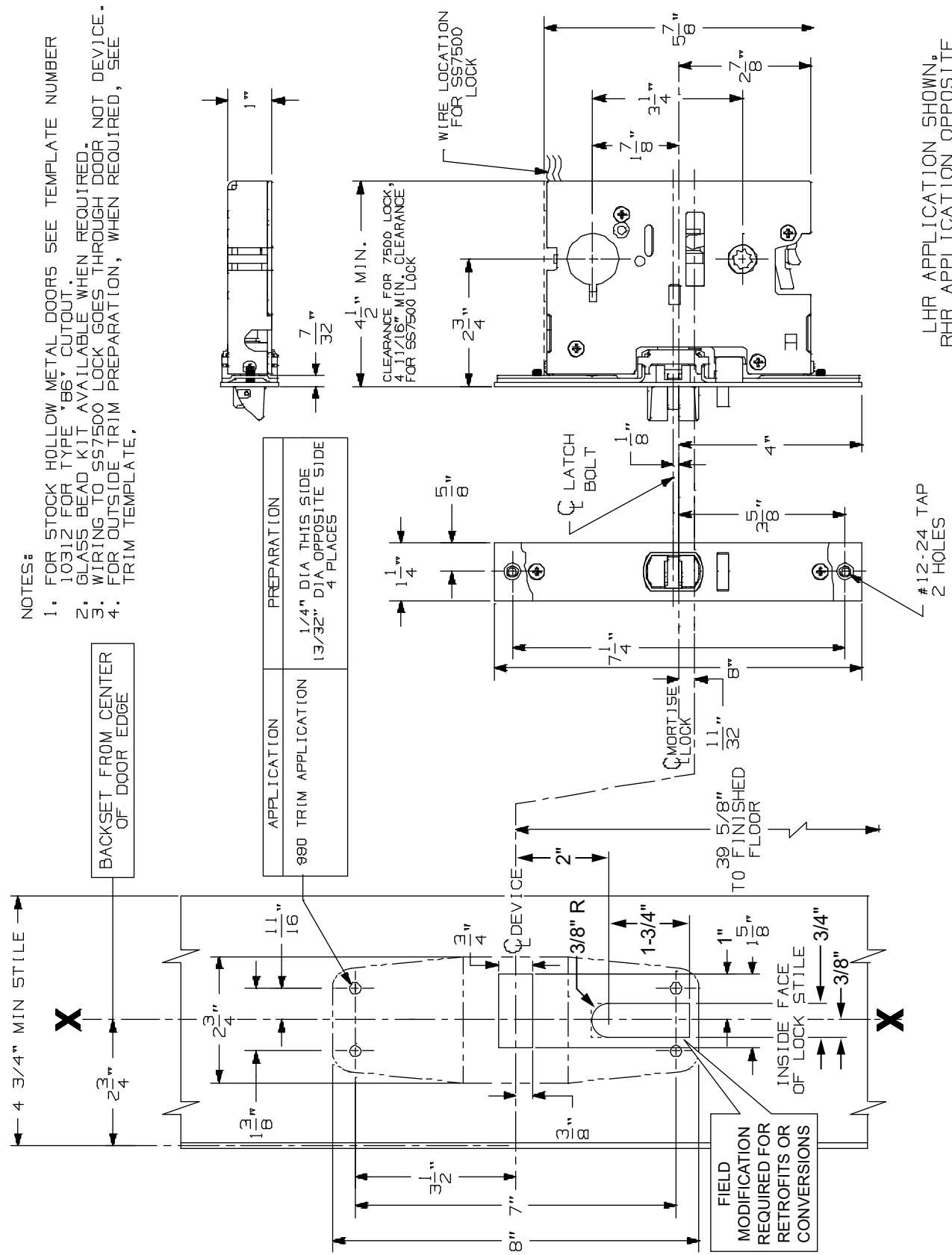


- NOTES:
1. FOR STOCK HOLLOW METAL DOORS SEE TEMPLATE NUMBER 10312 FOR TYPE "86" CUTOUT.
  2. GLASS BEAD KIT AVAILABLE WHEN REQUIRED.
  3. WIRING TO S57500 LOCK GOES THROUGH DOOR NOT DEVICE.
  4. FOR OUTSIDE TRIM PREPARATION, WHEN REQUIRED, SEE TRIM TEMPLATE.

BACKSET FROM CENTER OF DOOR EDGE

APPLICATION	PREPARATION
880 TRIM APPLICATION	1/4" DIA THIS SIDE 13/32" DIA OPPOSITE SIDE 4 PLACES



LHR APPLICATION SHOWN,  
RHR APPLICATION OPPOSITE

98/9975-2 & 98/9975-F-2  
98/9975-2 SI & 98/9975-F-2 SI  
Mortise Lock Devices

**VON DUPRIN®**

NOTES: SEE MASTER SHEET #10001 FOR SUGGESTED REINFORCING

TEMPLATE NUMBER: 10368\_b

DATE: 04-22-22