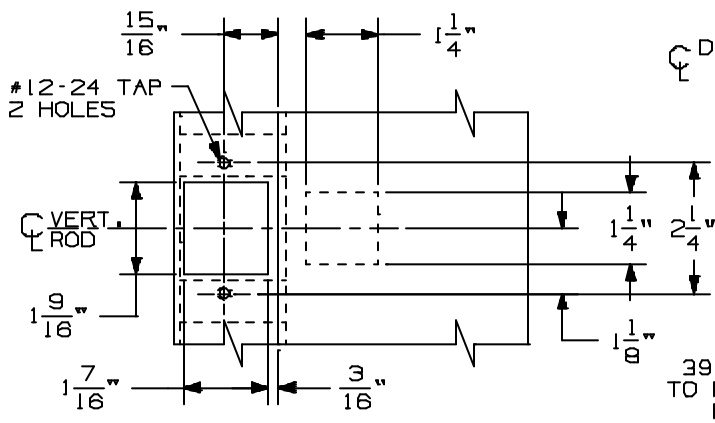
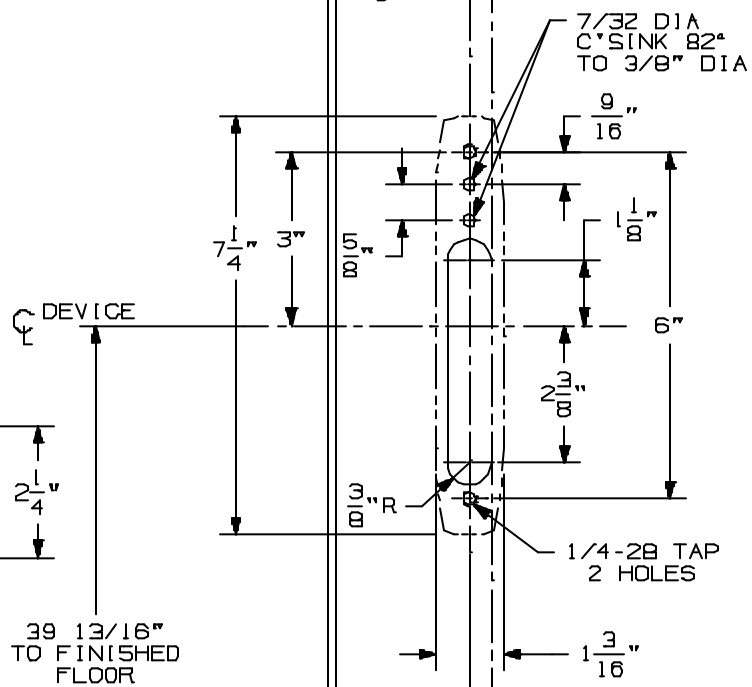
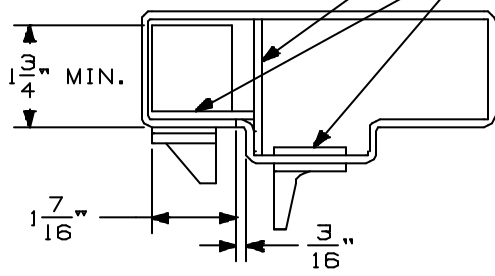


LHR SHOWN
RHR OPPOSITE

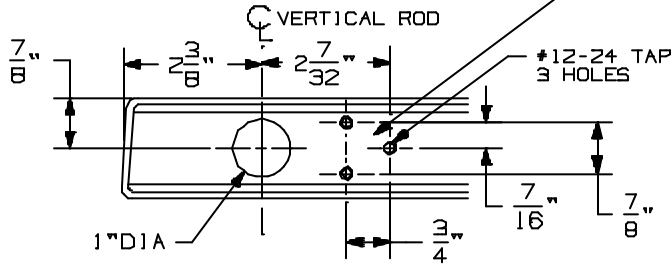
NOTE: MORTAR GUARD SHOULD BE PROVIDED TO PROTECT SOFFIT LATCH BOLT ASSEMBLY

REINFORCE FOR LATCH BOLT RELEASE
REINFORCE FOR ADJUSTABLE PLUNGER RELEASE & SOFFIT LATCH ASSEMBLY



SOFFIT FRAME REINFORCEMENT

REINFORCE FOR BOTTOM LATCH BOLT GUIDE



FOR OUTSIDE TRIM PREPARATION, WHEN REQUIRED, SEE ADDITIONAL TRIM TEMPLATE.

CROSSBAR 36 13/16" FROM FINISHED FLOOR

"UL" Listed Fire Exit Hardware
5547-F & 5547-F TL Vertical Rod Devices

VON DUPRIN

NOTES: SEE MASTER SHEET #10001 FOR SUGGESTED REINFORCING

TEMPLATE NUMBER:

10065_a

DATE:
05-15-13