



ALLEGION

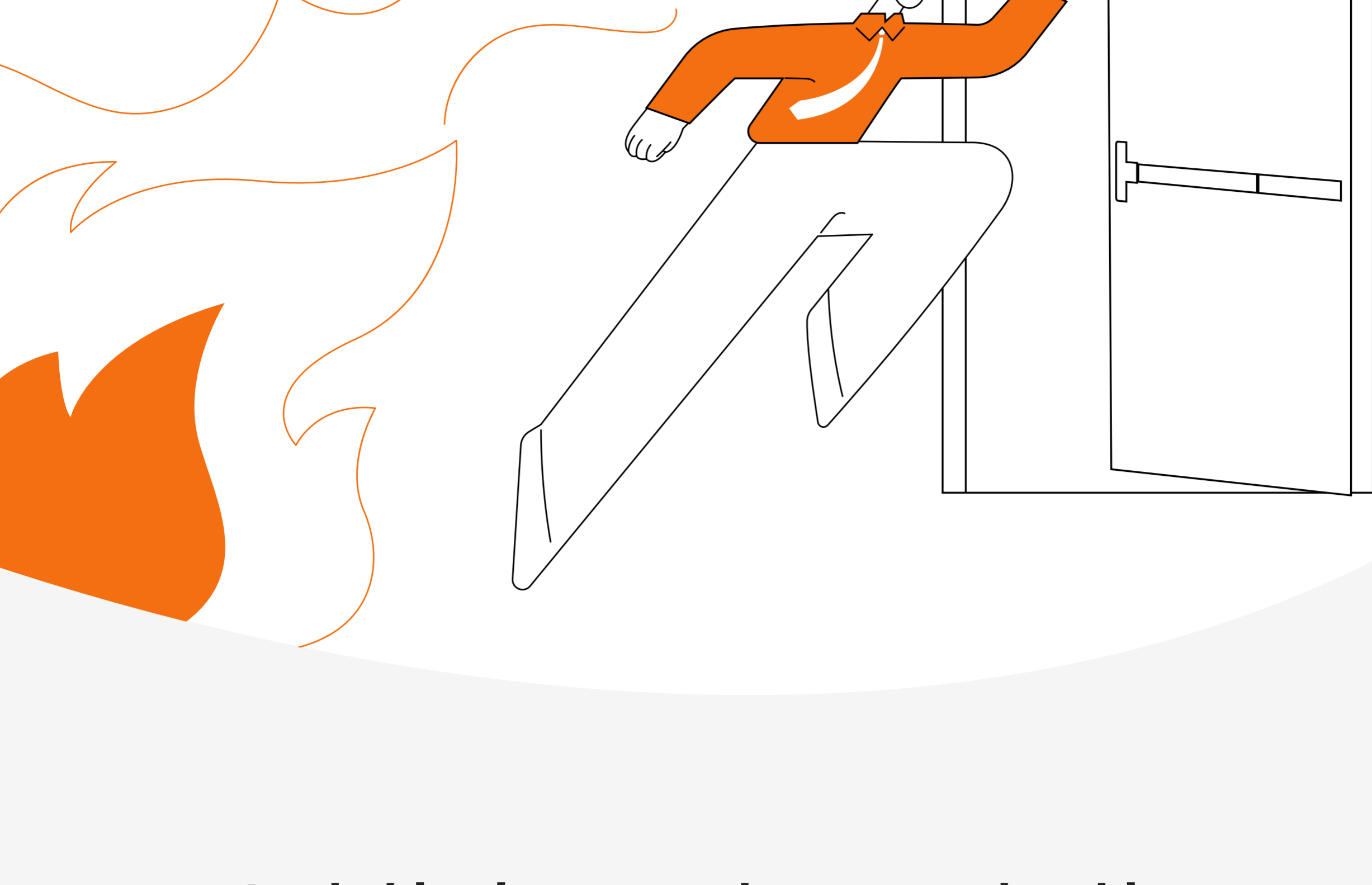
# Security & Safety of Door Openings: 7 Steps to Code Compliance

While the requirements of the model codes and standards may seem difficult to interpret and apply, here are 7 considerations for door openings, to help ensure the safety of all building occupants.



## 1 Doors must allow building occupants to exit freely, to facilitate evacuation during an emergency.

For "Special Locking Arrangements," the codes include prescriptive requirements to ensure life safety is not compromised.



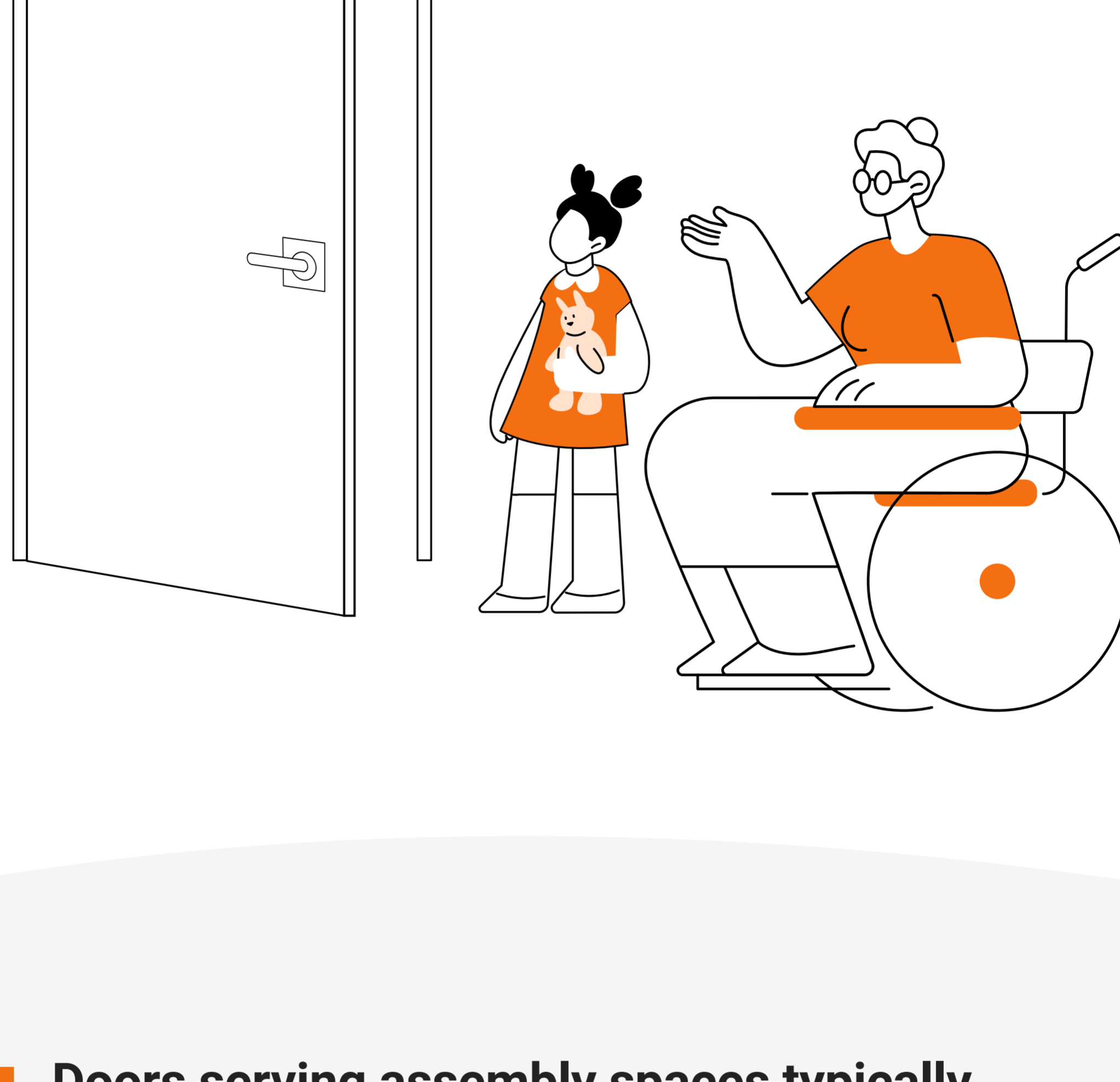
## 2 Lockable classroom doors must be able to be unlocked from the outside with a key or other approved means, to allow school staff or emergency responders to enter.

Rapid authorized access is crucial. According to the National Center for Education Statistics (NCES), in 2022, students ages 12–18 experienced 568,100 victimizations at school.



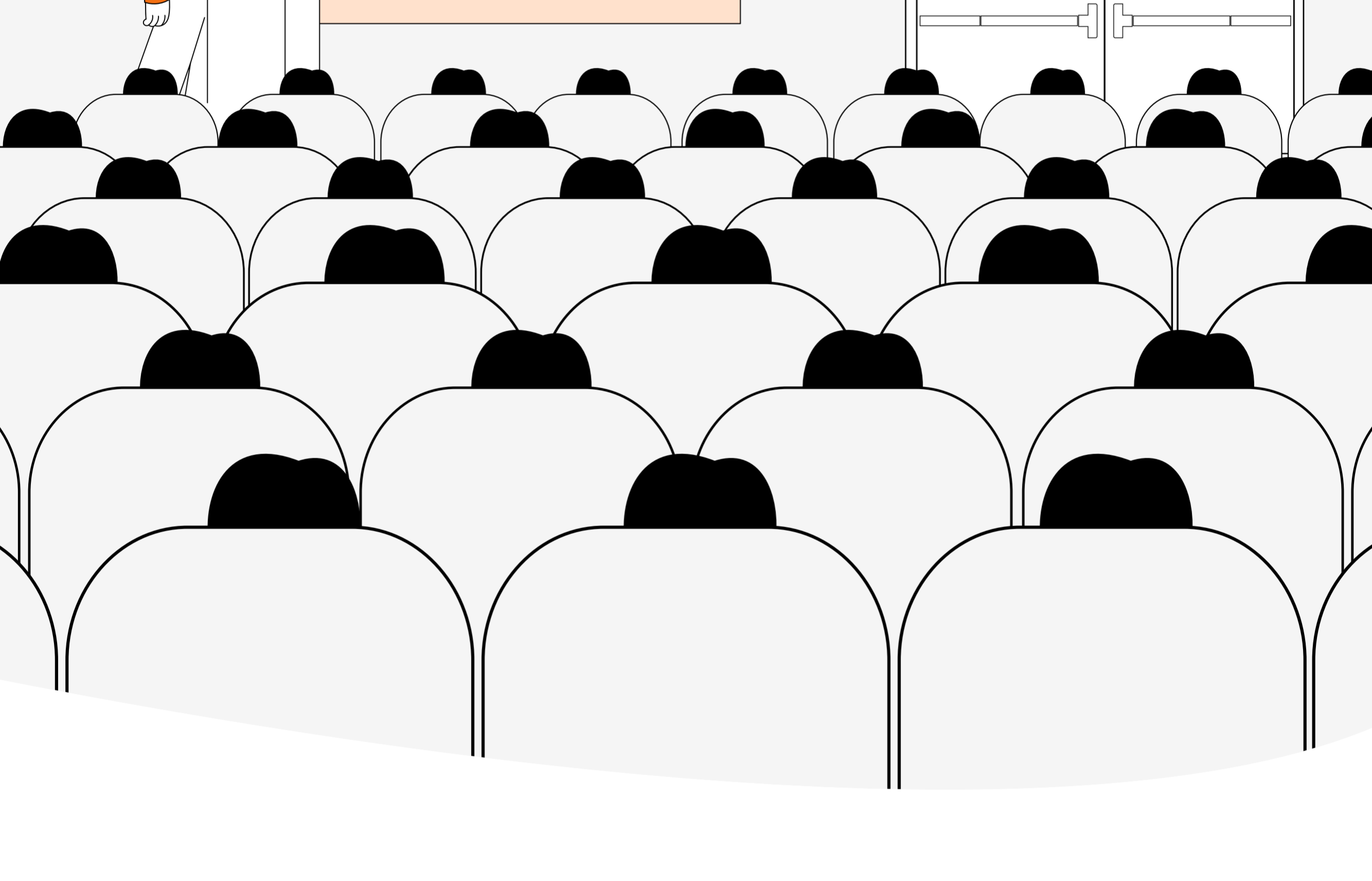
## 3 Door hardware must be operable by everyone, including small children and people with disabilities.

The ADA Standards for Accessible Design are available for download at ADA.gov.



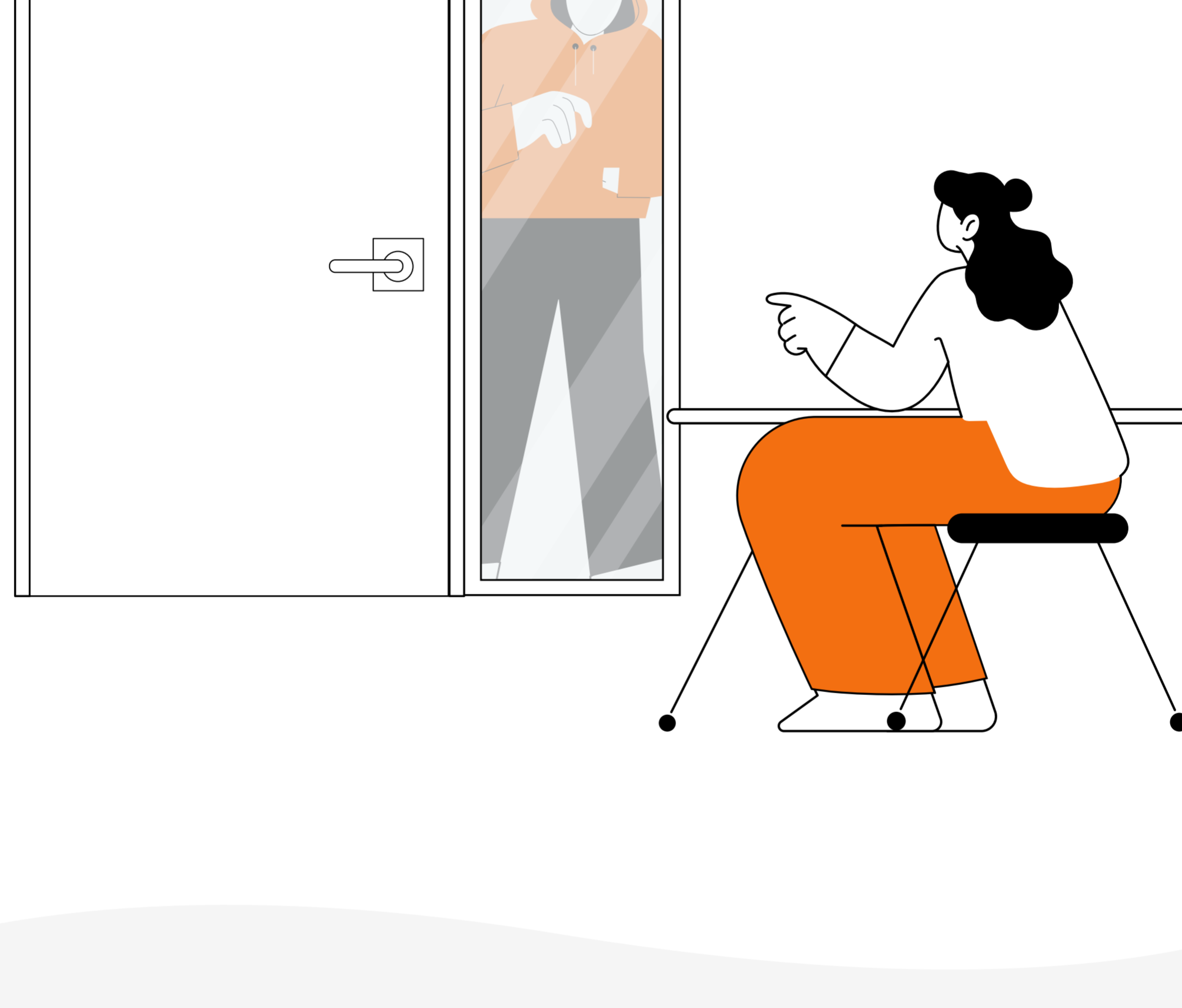
## 4 Doors serving assembly spaces typically require panic hardware, which allows large groups of people to exit quickly.

To learn more about panic hardware, visit [iDigHardware.com/panic-hardware](https://www.idighardware.com/panic-hardware).



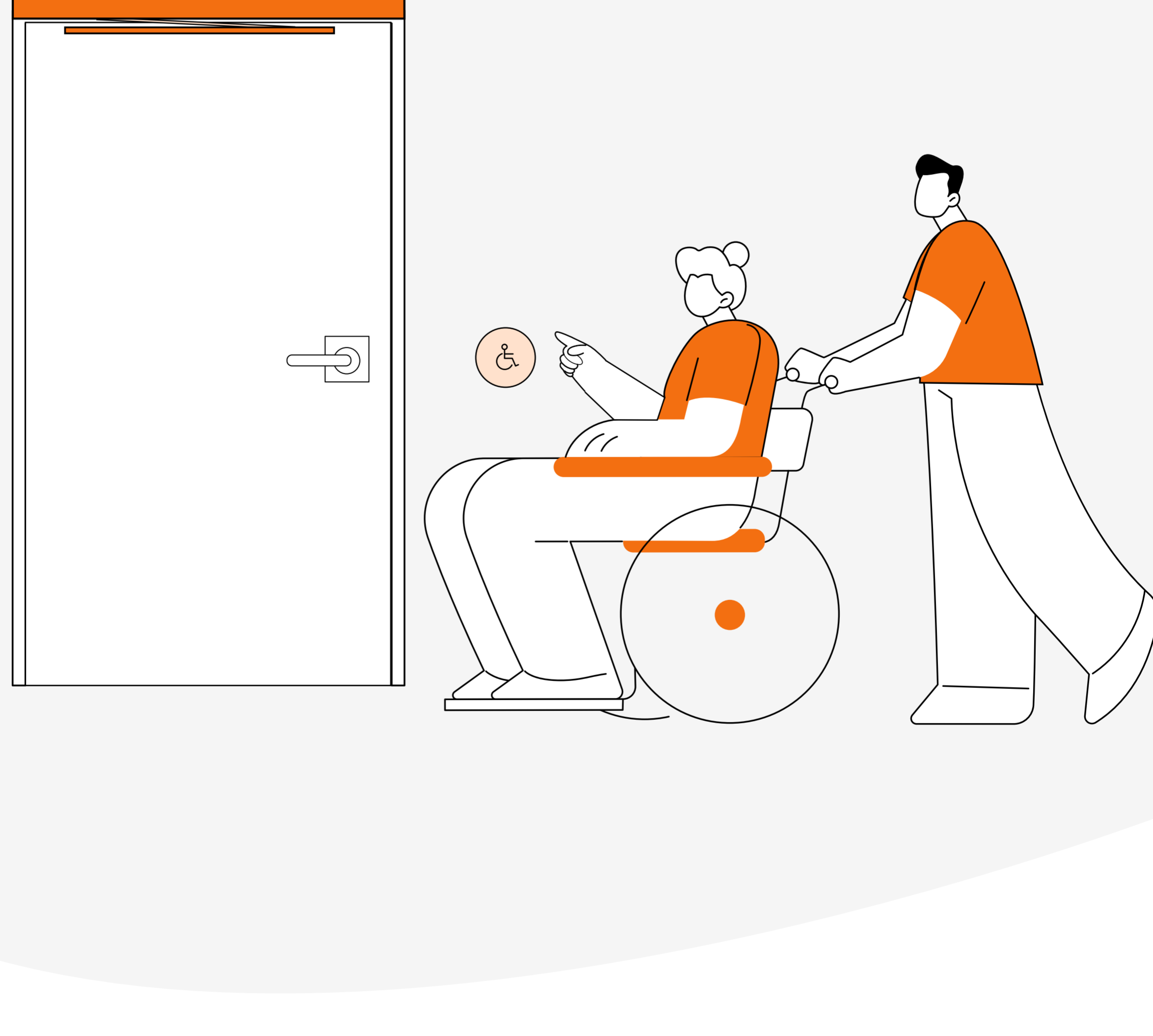
## 5 Glazing in doors or adjacent to door hardware should be resistant to forced entry to delay unauthorized access.

It is important to consider all types of hazards when planning for security and safety. According to reports from the FBI, between 2010 and 2023, there has been an average of 4 active shooter incidents in educational facilities per year.



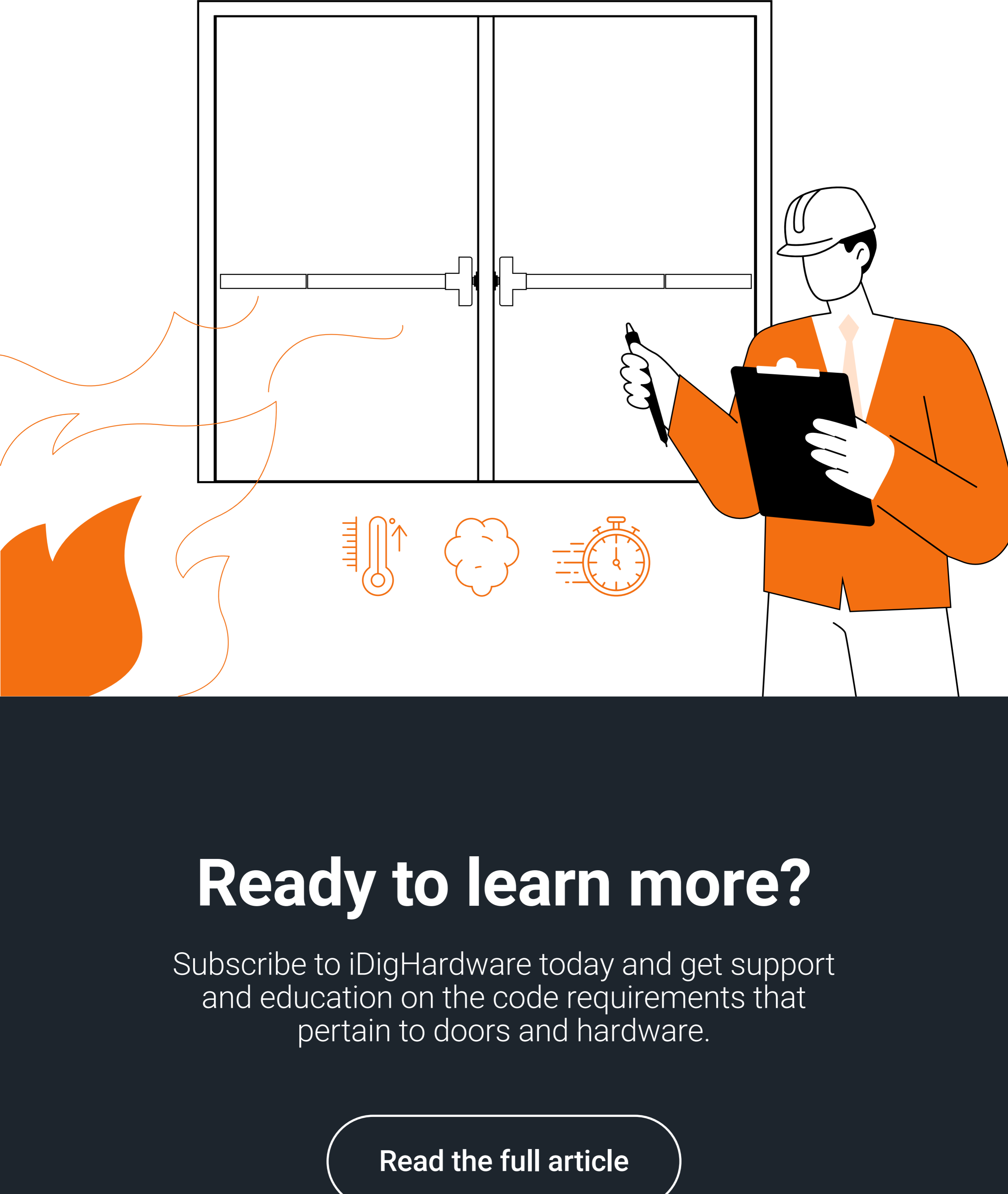
## 6 Doors must be openable with a limited amount of force, and automatic operators may be required in some locations.

A recent code change mandates automatic doors on accessible public entrances serving some types of buildings.



## 7 Fire door assemblies, which help to deter the spread of smoke and flames, are subject to specific requirements to ensure their performance during a fire.

Based on statistics from the NFPA, each year US fire departments respond to an approximate average of 4,800 fires in educational facilities.



## Ready to learn more?

Subscribe to iDigHardware today and get support and education on the code requirements that pertain to doors and hardware.

[Read the full article](#)

