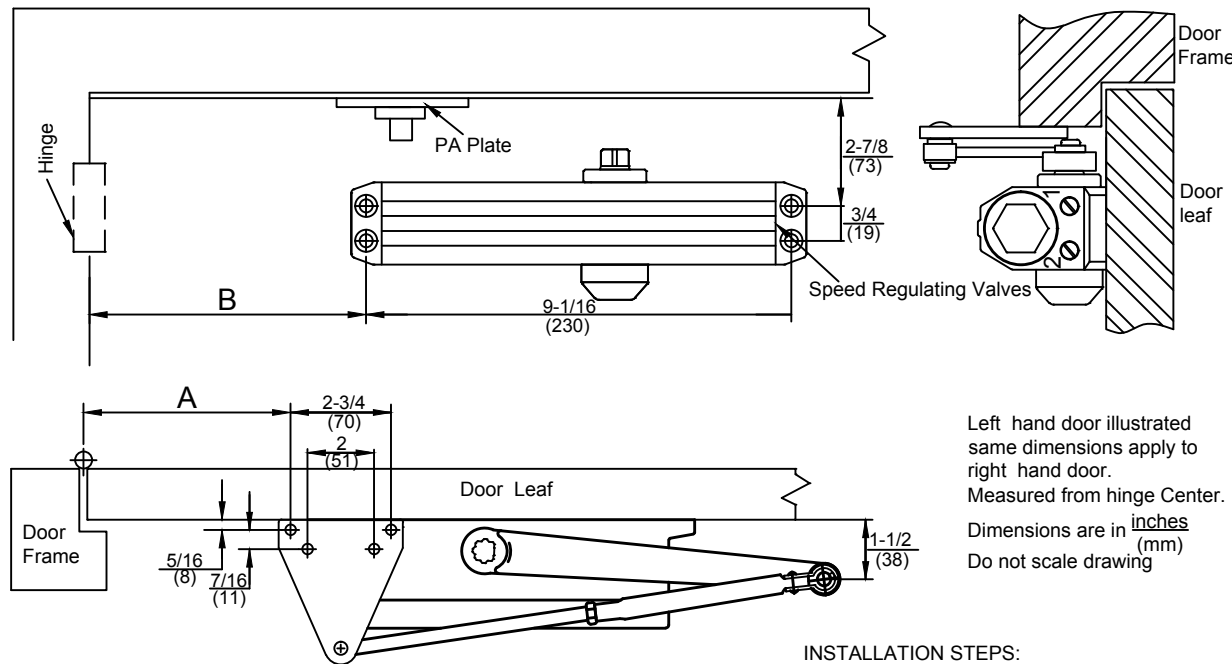


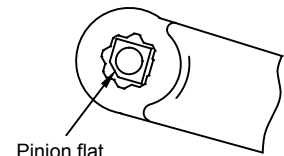
PARALLEL ARM MOUNTING (PUSH SIDE)

TECHNICAL DIMENSIONS:

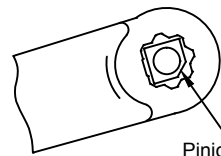


Left hand door illustrated same dimensions apply to right hand door. Measured from hinge center. Dimensions are in inches (mm) Do not scale drawing

Dimension: Model No.	Dimension "A"		Dimension "B"		Opening Angle
	Inch	mm	Inch	mm	
DCL2000	7-3/4	197	6-1/8	156	130°
	5-3/4	146	4-1/8	105	180°



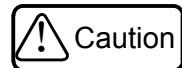
Pinion flat
For left hand door



Pinion flat
For right hand door

INSTALLATION STEPS:

1. Select opening angle of the door. Use dimensions shown in chart and illustration above to drill mounting holes on door frame and leaf.
2. Attach closer to door leaf with speed regulating valves back to hinge.
3. Attach PA plate to top frame as shown.
4. Remove foot from forearm as shown and discard it.
5. Install main arm on pinion shaft, Rotate pinion 45° toward hinge edge of door to align main arm letter "B" (Right hand door) or "A" (Left hand door) with pinion flat. Fasten with arm screw.
6. Fasten forearm to PA plate.
7. Adjust forearm length to set the arm elbow about 1-1/2" (38mm) from door when connected to main arm. Use washer and screw provided to secure pivot connection. Tighten locknut.
8. Snap pinion cap over spindle at bottom.
9. Adjust closer. (Same to Page 2)



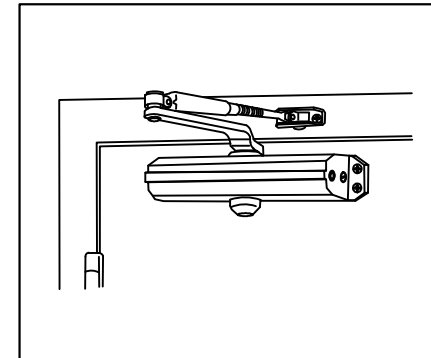
IMPROPER INSTALLATION OR REGULATION MAY RESULT IN PERSONAL INJURY OR PROPERTY DAMAGE. FOLLOW ALL INSTRUCTIONS CAREFULLY PLEASE.

DCL2000 SERIES DOOR CLOSER REGULAR ARM INSTALLATION

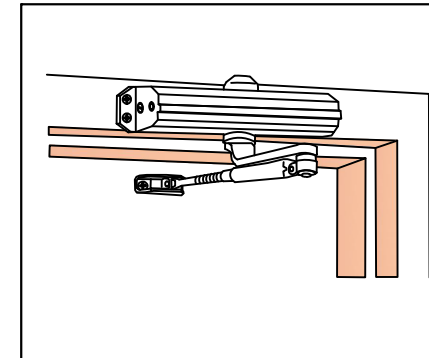
DEXTER
COMMERCIAL HARDWARE

Model: Size 1-6

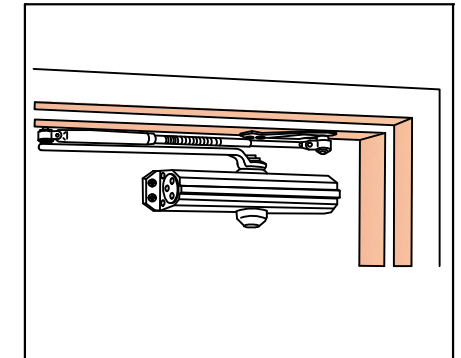
MOUNTING APPLICATIONS:



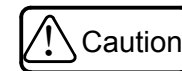
Regular Arm (Pull Side)



Top Jamb (Push Side)

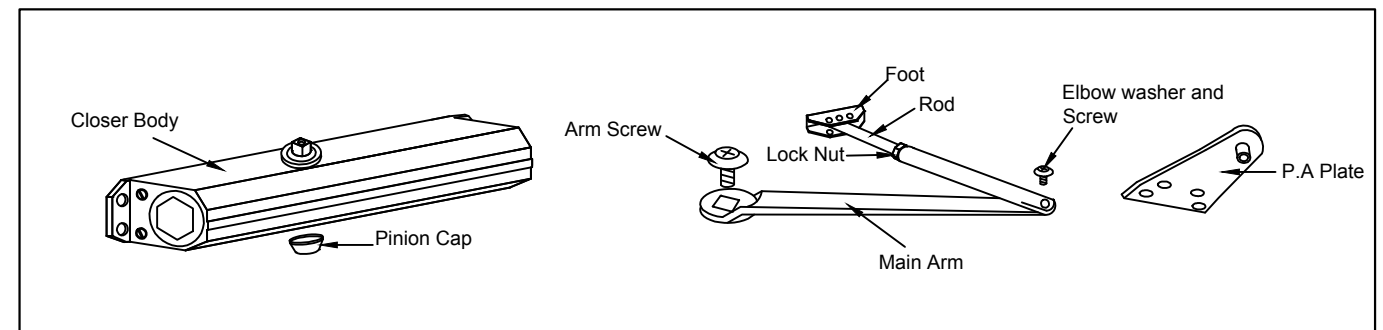


Parallel Arm (Push Side)

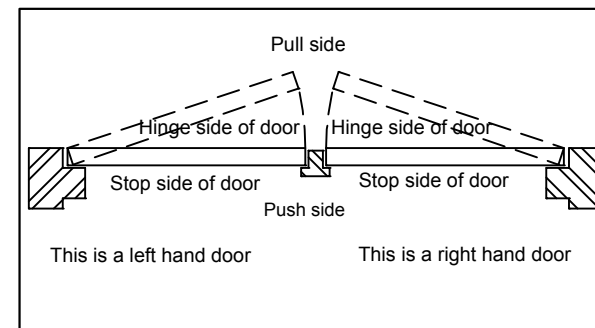


PLEASE READ THIS INSTRUCTION CAREFULLY BEFORE INSTALLATION; WE **WON'T** BE RESPONSIBLE FOR ANY RESULTS WHICH ARE CAUSED BY THE WRONG MOUNTING WAYS.

PARTS OF CLOSERS



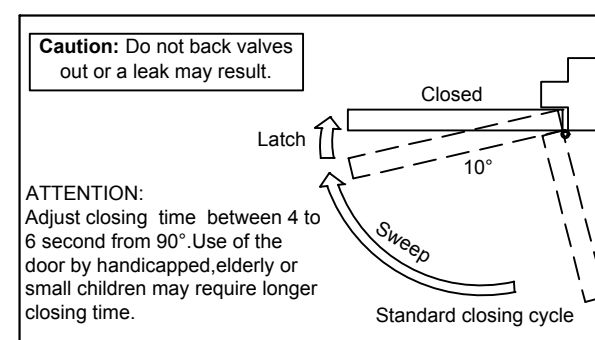
HAND OF DOOR.



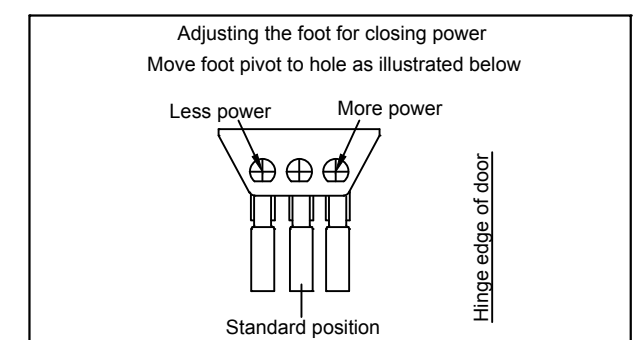
POWER SIZE SETTING AND DOOR WIDTH

Closer Size	Regular & Top Jamb Closers			Parallel Arm Closers			Full 360° Turns C.C.W
	Interior	Exterior Inswing	Exterior Outswing	Closer Size	Interior	Exterior Outswing	
1	28"			1			-4 Turns
2	36"			2	30"		0 Turn
3	42"	30"	36"	3	36"	30"	4 Turns C.W
4	48"	36"	42"	4	42"	36"	12 Turns C.W
5	54"	42"	48"	5	48"	42"	16 Turns C.W
6	60"	48"	54"	6	54"	48"	20 Turns C.W

DOOR CLOSING CONTROL

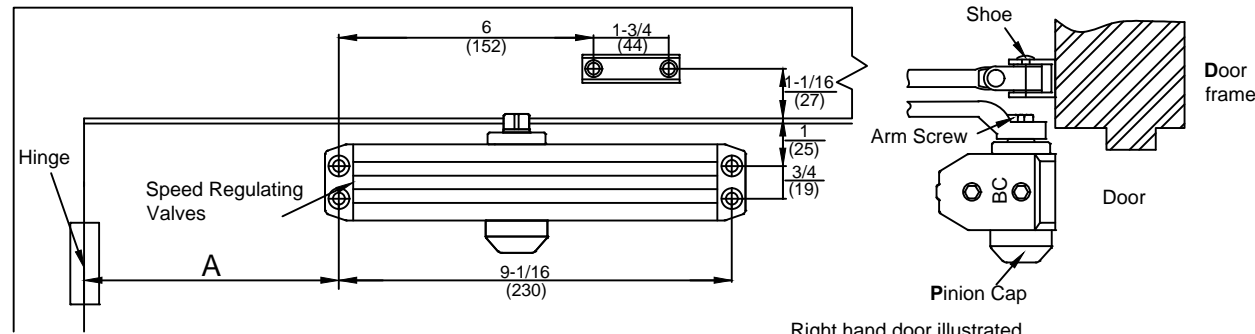


ATTENTION: Adjust closing time between 4 to 6 second from 90°. Use of the door by handicapped, elderly or small children may require longer closing time.



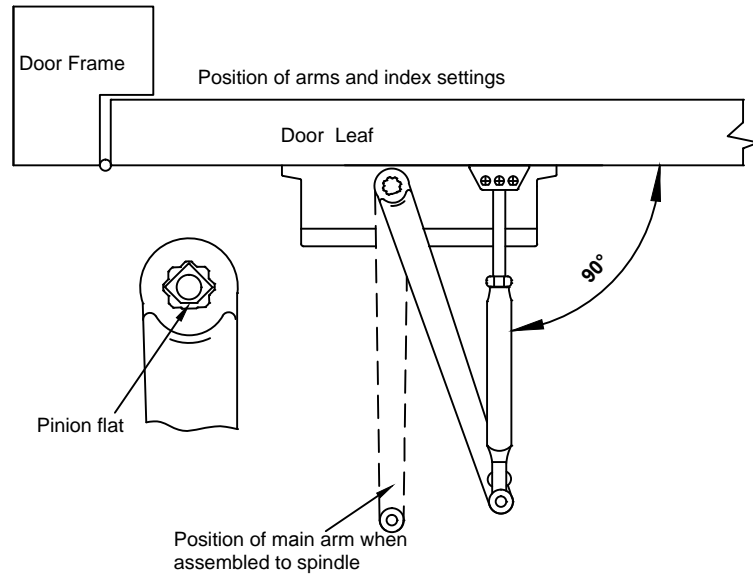
REGULAR ARM(PULL SIDE)

TECHNICAL DIMENSIONS



Dimension Model No.:	Dimension "A"		Opening Angle
	Inch	mm	
DCL2000	6	152	120°
	3-1/2	89	180°

Right hand door illustrated same dimensions apply to left hand door. Measured from hinge Center. Dimensions are in inches (mm) Do not scale drawing

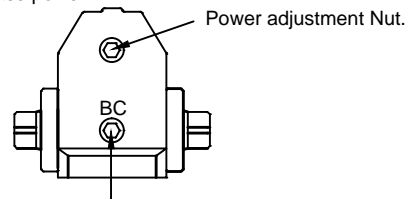


INSTALLATION STEPS:

1. Select opening degree of the door. Use Dimensions as shown to drill mounting holes on door leaf and frame.
2. Assemble main arm to closer pinion spindle.
3. Attach the closer body to door leaf with speed regulating valves toward hinge.
4. Attach the foot and rod to the door frame.
5. Adjust length of the forearm to position forearm at right angle to the door leaf when connected to main arm at elbow. Use Washer and screw provided to secure pivot connection. Tighten locknut on forearm.
6. Snap pinion cap over spindle at bottom of the closer.
7. Adjust closer.

POWER SIZE AND BACK CHECK ADJUSTMENT

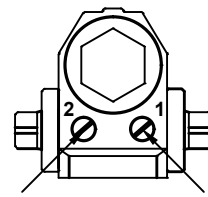
Adjust the spring power as chart in page 1. DO NOT exceed the maximum turns. The spring power has been preset on size 2 in factory. Turn this screw clockwise to increase or counter clockwise to decrease power.



Turn BC regulating valve clockwise for a harder cushion and counter-clockwise for a softer cushion. NEVER close this valve completely.

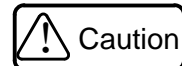
SWEEP AND LATCHING SPEED ADJUSTMENT

Turn speed regulating valve clockwise to slow down or counter clockwise to speed up door movement.



This valve controls latching speed

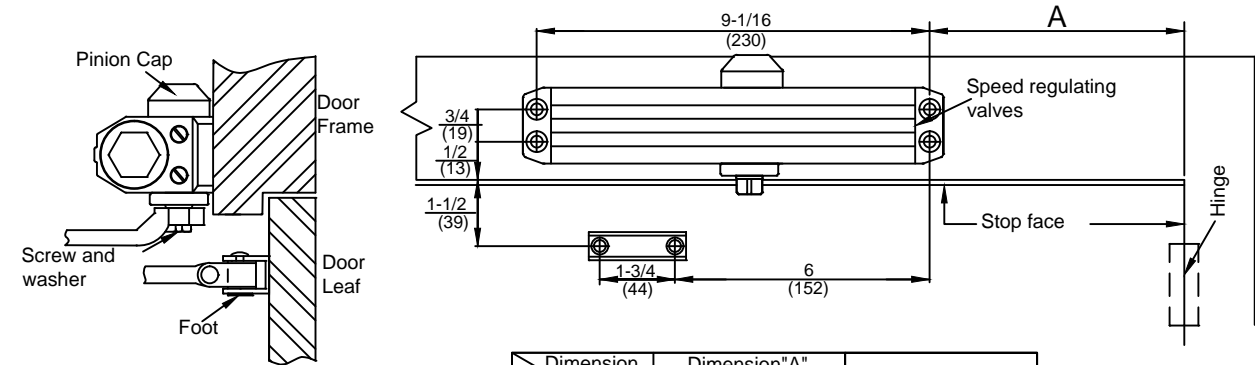
This valve controls sweep speed



IMPROPER INSTALLATION OR REGULATION MAY RESULT IN PERSONAL INJURY OR PROPERTY DAMAGE. FOLLOW ALL INSTRUCTIONS CAREFULLY PLEASE.

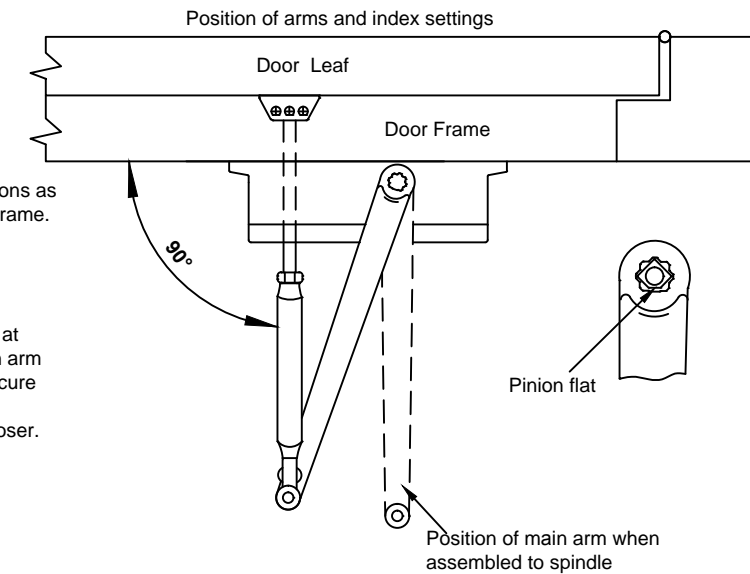
TOP JAMB MOUNTING (PUSH SIDE)

TECHNICAL DIMENSIONS



Dimension Model No.:	Dimension "A"		Opening Angle
	Inch	mm	
DCL2000	6	152	120°
	3-1/2	89	180°

Right hand door illustrated same dimensions apply to left hand door. Measured from hinge Center. Dimensions are in inches (mm) Do not scale drawing



INSTALLATION STEPS:

1. Select opening degree of the door. Use Dimensions as shown to drill mounting holes on door leaf and frame.
2. Assemble main arm to the closer spindle.
3. Attach the closer body to door frame with speed regulating valves toward the hinge.
4. Attach the foot and rod on the door leaf.
5. Adjust length of the forearm to position forearm at right angle to the frame when connected to main arm at elbow. Use Washer and screw provided to secure pivot connection. Tighten locknut on forearm.
6. Snap pinion cap over spindle at bottom of the closer.
7. Adjust closer. (Same to Page 2)



IMPROPER INSTALLATION OR REGULATION MAY RESULT IN PERSONAL INJURY OR PROPERTY DAMAGE. FOLLOW ALL INSTRUCTIONS CAREFULLY PLEASE.