

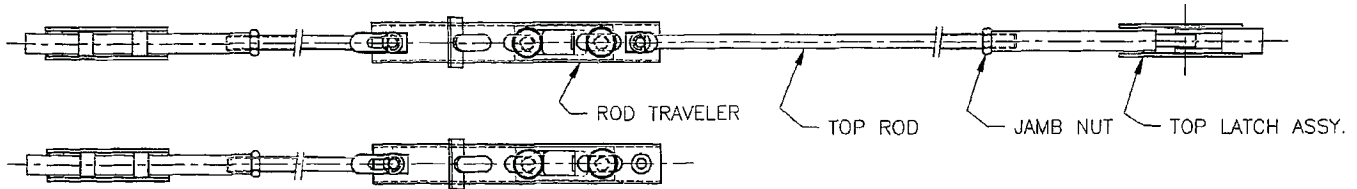


4270108953

1490 Rod Extension Kit

FALCON®

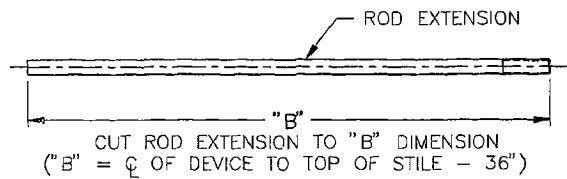
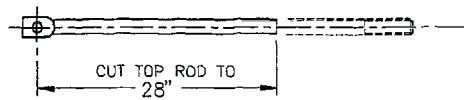
Installation Instructions



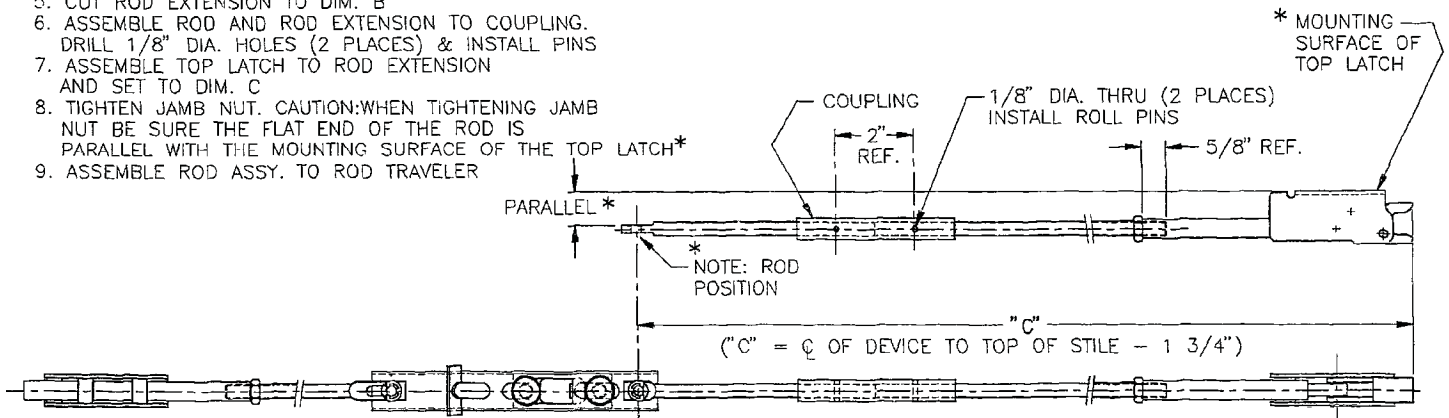
INSTRUCTIONS

1. REMOVE TOP ROD FROM TRAVELER
2. REMOVE TOP LATCH ASSY. FROM TOP ROD
3. CUT EXISTING TOP ROD TO 28"
4. CALCULATE CUT LENGTH FOR ROD EXTENSION

A = CENTERLINE OF DEVICE TO TOP OF STILE
 B = A - 36
 C = A - 1 3/4
 DIMENSION FROM CENTER OF HOLE IN ROD
 TO TOP OF TOP LATCH ASSY. (IN LOCKED POSITION)



5. CUT ROD EXTENSION TO DIM. B
6. ASSEMBLE ROD AND ROD EXTENSION TO COUPLING. DRILL 1/8" DIA. HOLES (2 PLACES) & INSTALL PINS
7. ASSEMBLE TOP LATCH TO ROD EXTENSION AND SET TO DIM. C
8. TIGHTEN JAMB NUT. CAUTION: WHEN TIGHTENING JAMB NUT BE SURE THE FLAT END OF THE ROD IS PARALLEL WITH THE MOUNTING SURFACE OF THE TOP LATCH*
9. ASSEMBLE ROD ASSY. TO ROD TRAVELER



NOTE: MAX. STILE HT. 118 1/2" W/STD. 40 9/16" ϕ DEVICE
 (USING FULL LENGTH ROD EXTENSION)



Customer Service

1-877-671-7011

www.allegion.com/us

© Allegion 2014
 Printed in U.S.A.
 4270108953 Rev. 10/14-d