



511VR

FALCON®

640018-00

Trim for 25 Series Exit Device

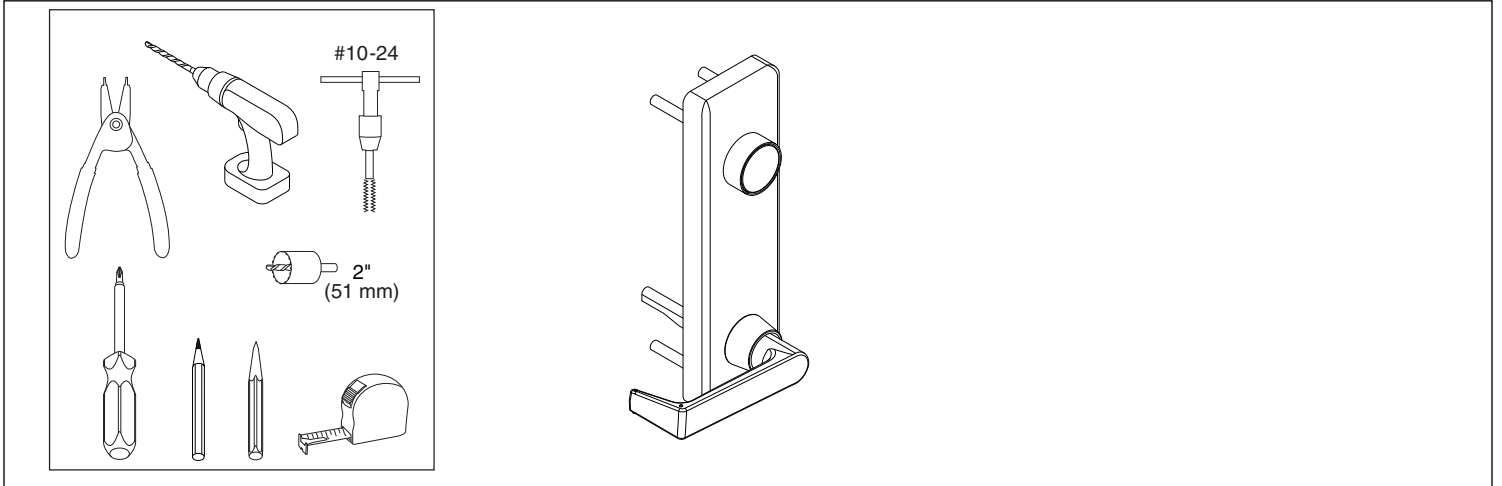
Recorte para el dispositivo de salida la serie 25

Garniture extérieure pour l'appareil de sortie de la série 25

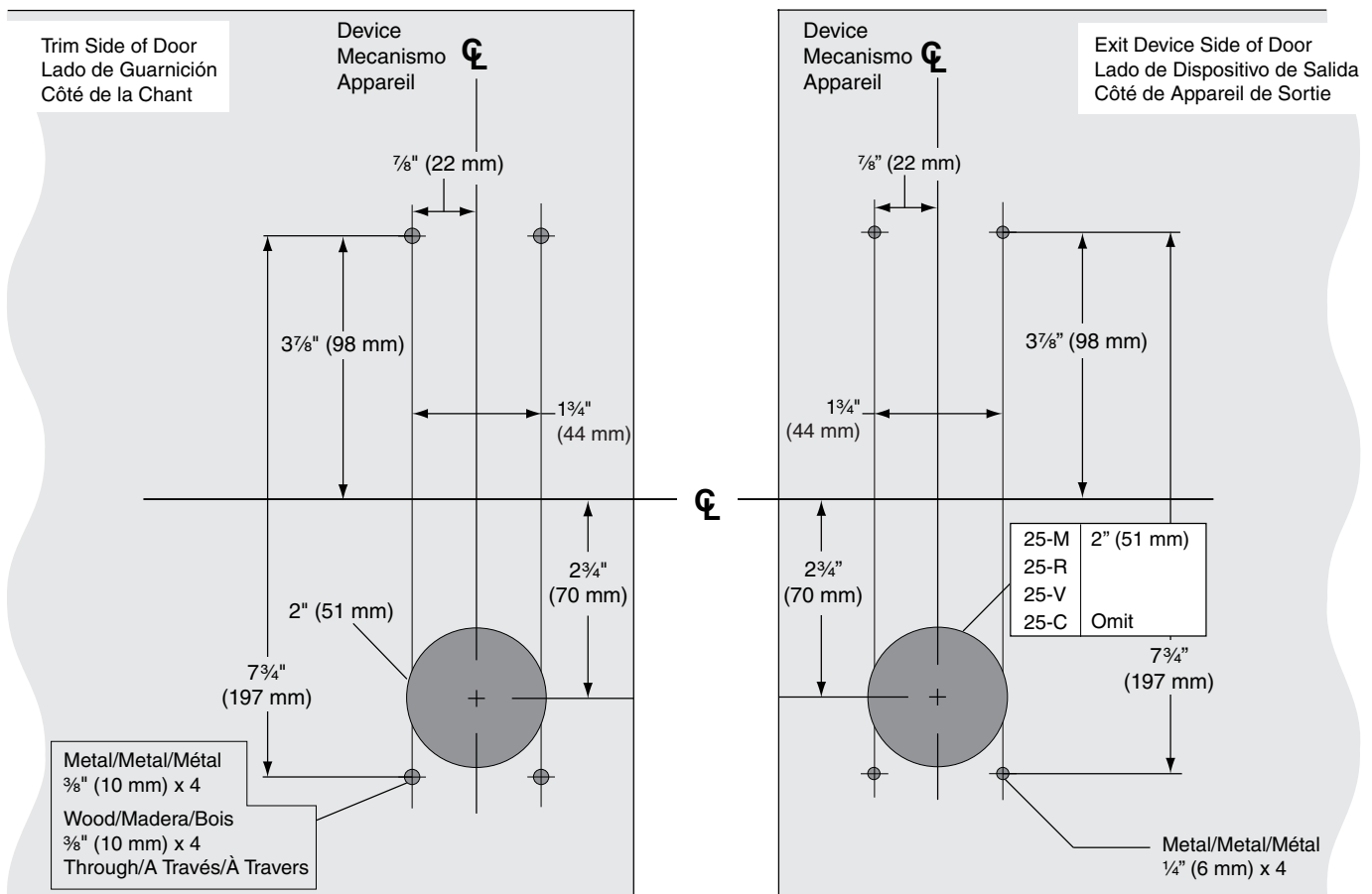
Installation Instructions

Instrucciones de Instalación

Notice d'installation

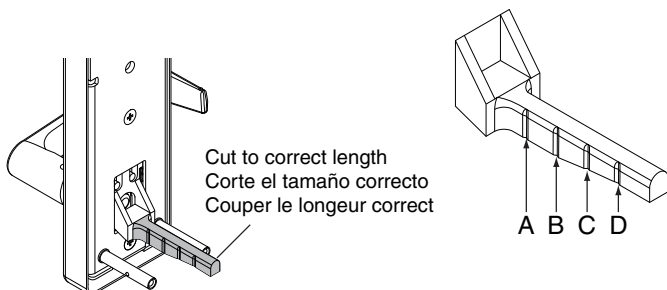


1 Prepare Door (LHR Shown)
 Prepare la Puerta (Se muestra el LHR)
 Préparer la Porte (LHR illustré)



FOR RIM DEVICE (25-R) GO TO STEP 3
PARA RIM DEVICE (25-R) SIGA AL PASO 3
POUR RIM DEVICE (25-R) PASSER À L'ÉTAPE 3

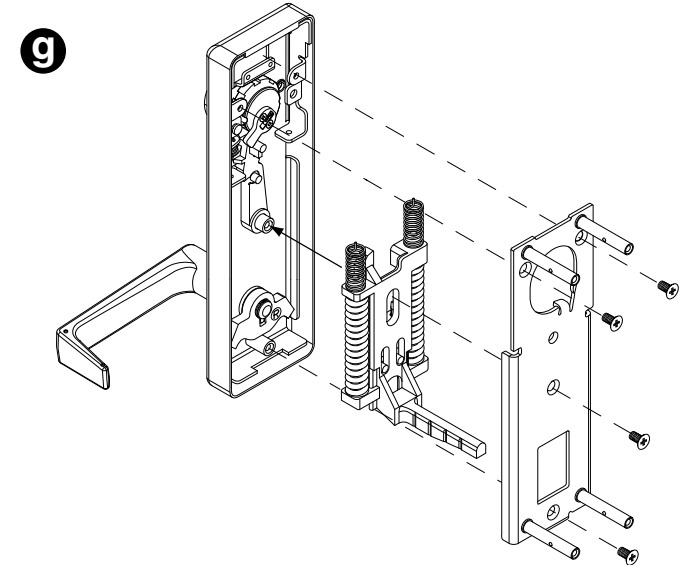
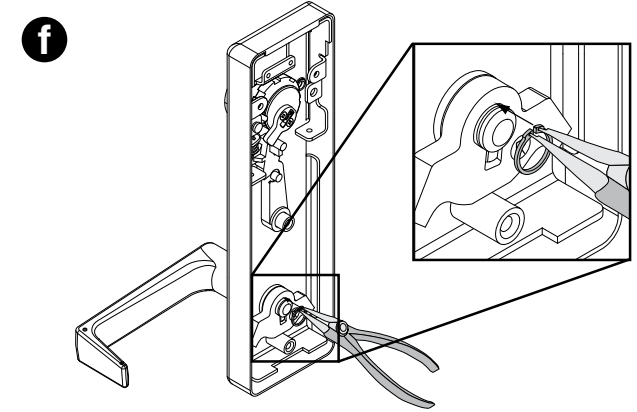
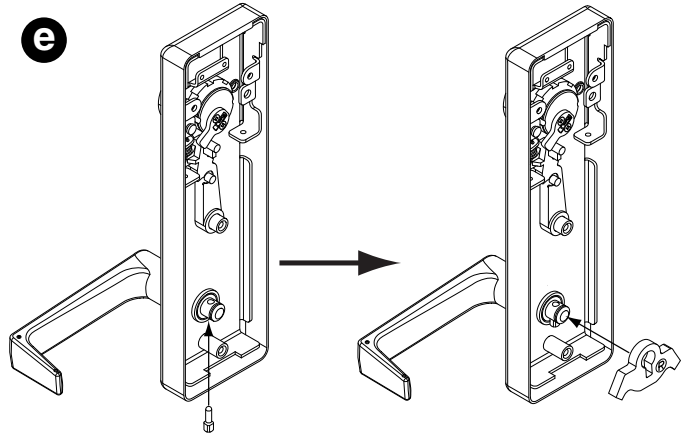
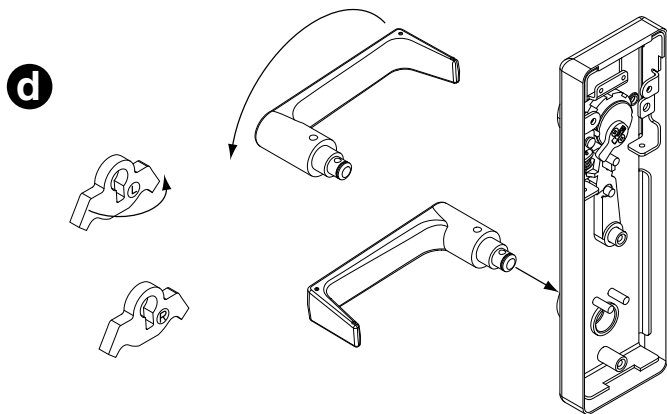
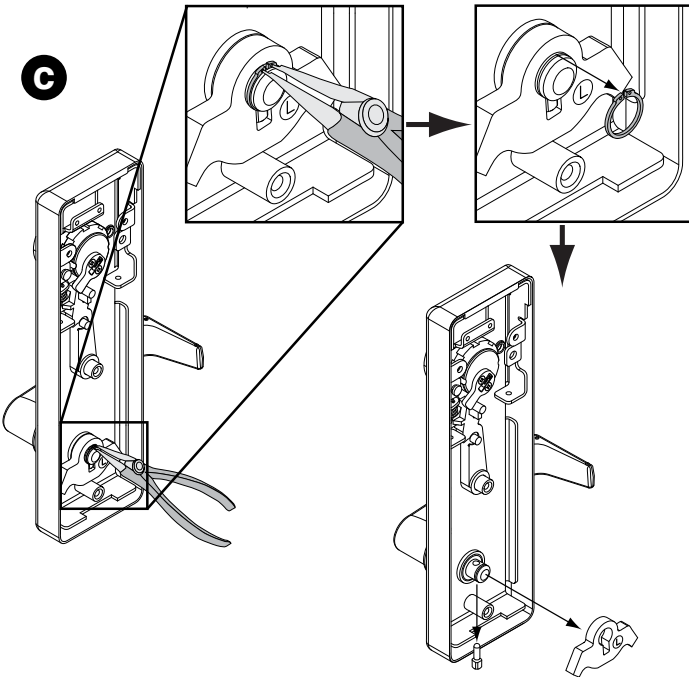
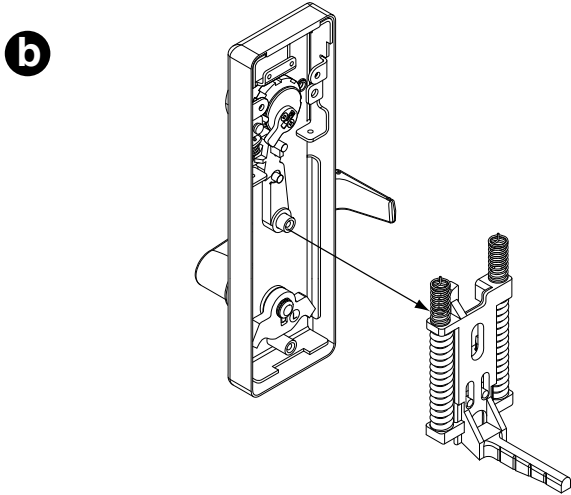
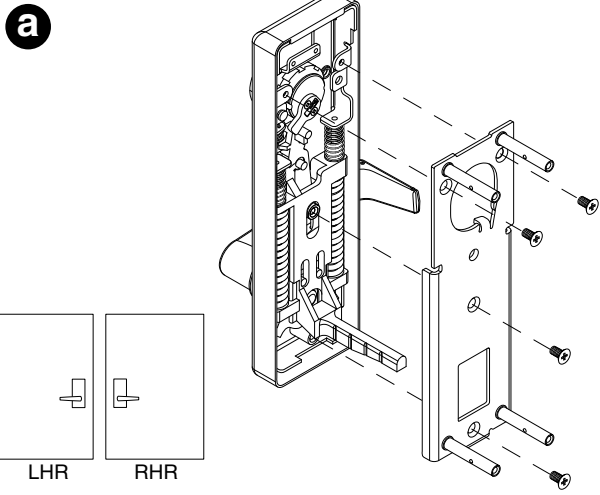
2 Cut Lift Block Finger
 Corte la Lift Block Finger
 Couper le Lift Block Finger



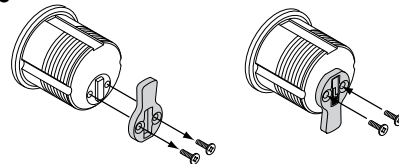
Cut to correct length
 Corte el tamaño correcto
 Couper le longueur correct

| | | | |
|-----------------|---|--|--|
| | 25-R Do not cut No se debe cortar Ne pas couper | | |
| | 25-V Surface Vertical Exterior Vertical En Surface Verticale | 25-C Concealed Vertical Oculto Vertical Dissimulé Verticale | 25-M Mortise Montaje Mortaise |
| 1 3/4" 44 mm | C | A | B |
| 2 1/4" 57 mm | D | B | C |

3 If Necessary, Reverse Handing
 Si Necesario, Invertir la Orientación
 Si Nécessaire, Inverser du Sens de Déplacement



4 If Using Cylinder, Remove Cam and Rotate 180 °
 Si utiliza un cilindro retire la leva y gire 180
 Si utilisation d'un cylindre, retirer la came et tourner sur 180 °



5 If Necessary, Install Cylinder
 Si Necesario, Instale el Cilindro
 Si Nécessaire, Installer la Cylindre

