

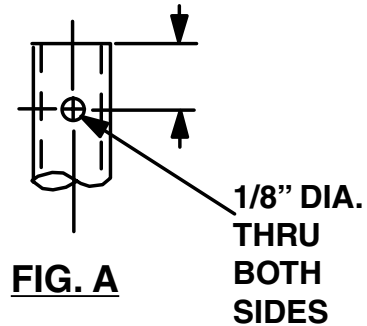
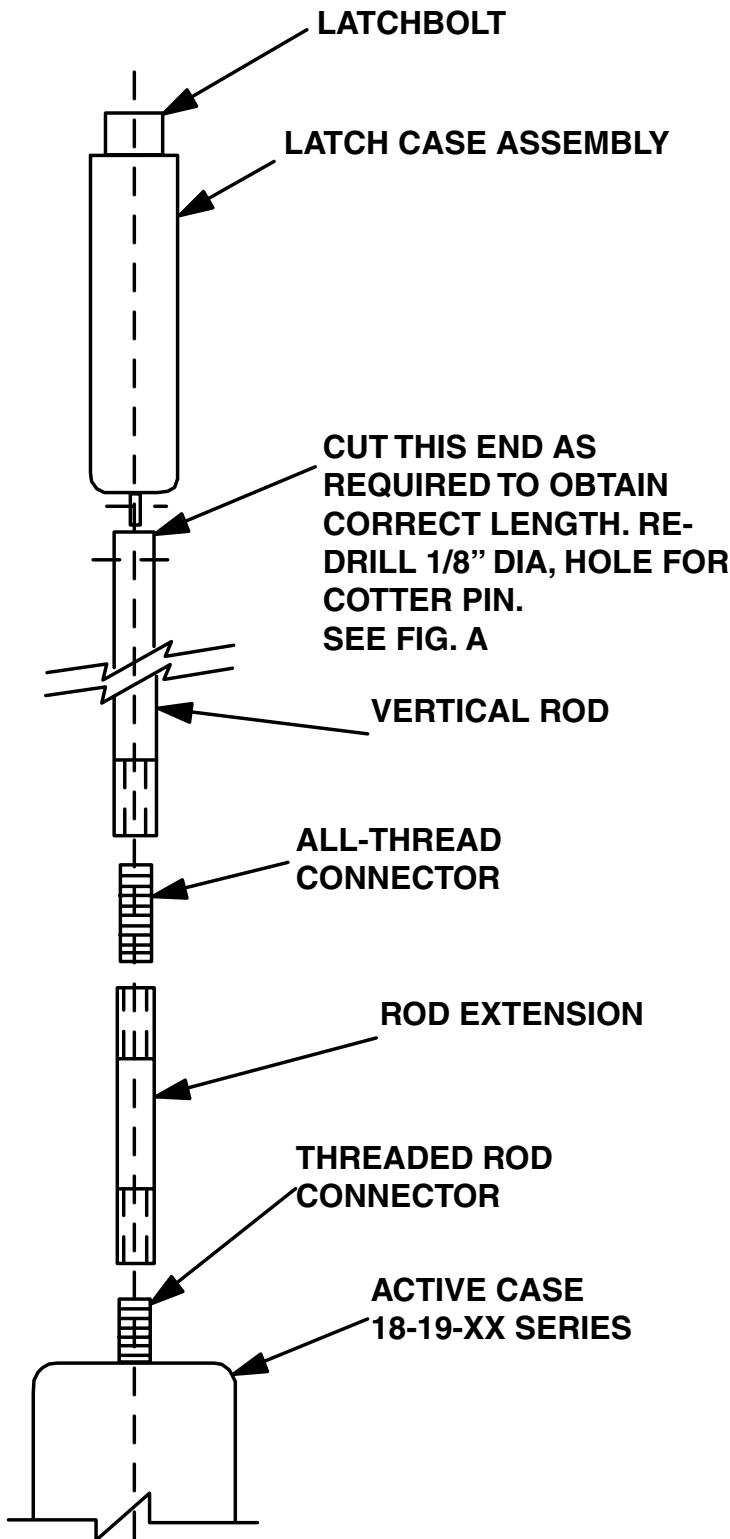


D-4060

Rod Extension

FALCON®

Installation Instructions



INSTRUCTIONS

1. ASSEMBLE VERTICAL ROD, ALL-THREAD CONNECTOR, AND ROD EXTENSION BY THREADING TOGETHER. TIGHTEN SECURELY.
2. DETERMINE LENGTH OF ROD REQUIRED AND CUT TO LENGTH AS REQUIRED. NOTE: CUT END OPPOSITE ROD EXTENSION.
3. REDRILL 1/8" DIA. HOLE 15/32" FROM CUT END THRU BOTH WALLS. SEE FIG. A.
4. PROCEED WITH DEVICE INSTALLATION.