

ROD GUIDE INSTALLATION INSTRUCTIONS -

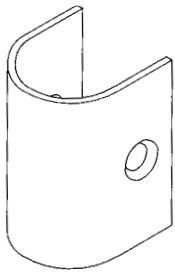
FIRE AND PANIC 17, 18, & XX SERIES
SURFACE VERTICAL ROD DEVICE AND
18 & XX SERIES THREE POINT LATCH DEVICE

FALCON[®]

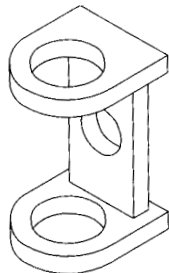
ROD GUIDE
D-4315-B
Date: 05-29-2015

1 PARTS CHECK

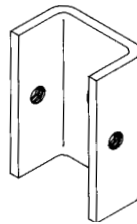
1. THE FOLLOWING PARTS REPLACE THE ROD GUIDE PARTS SHOWN IN THE INSTALLATION INSTRUCTIONS.



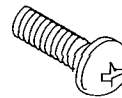
ROD GUIDE COVER
(P/N 4993)



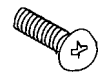
ROD GUIDE INSERT
(P/N 4994)



ROD GUIDE BRACKET
(P/N 4992)



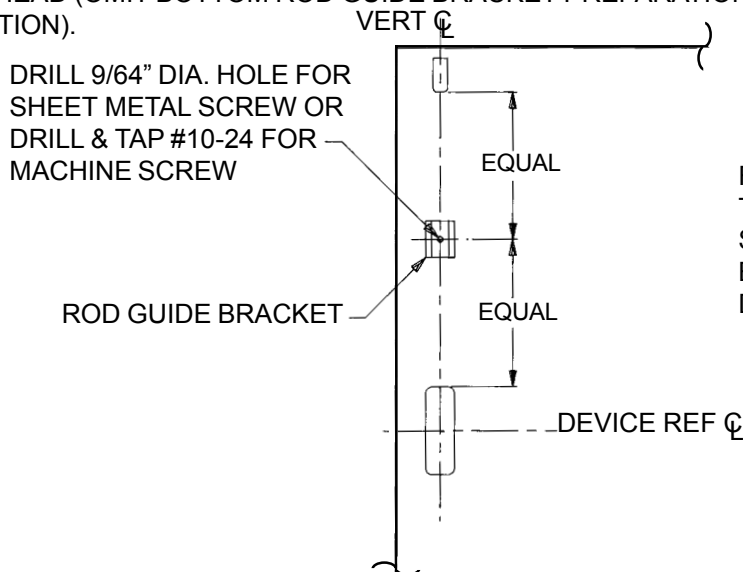
FIRE DEVICE:
#10-24x3/4" PPHMS
PANIC DEVICE:
#10X1-1/4" PPHSMS



#8-32x1/4"
UFPHMS
(2 QTY PER ROD
GUIDE)

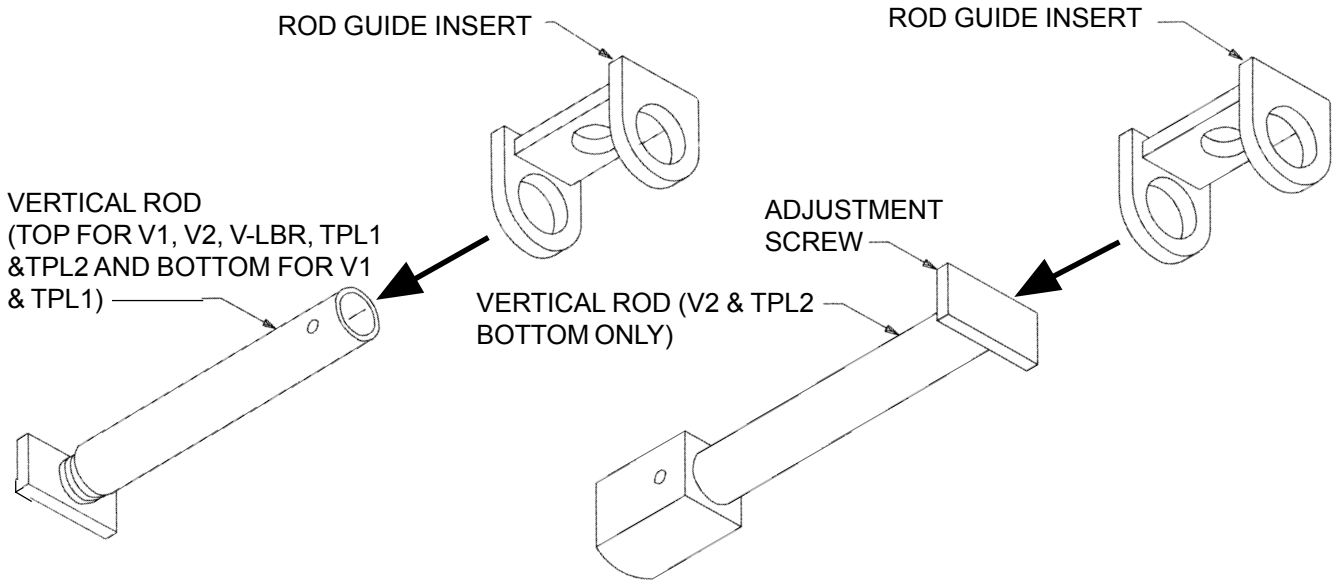
2 INSTALLATION CHANGES

1. ATTACH ROD GUIDE BRACKET(S) TO DOOR ON VERTICAL ϕ EQUIDISTANT BETWEEN THE LATCH(ES) AND DEVICE HEAD (OMIT BOTTOM ROD GUIDE BRACKET PREPARATION FOR LESS BOTTOM ROD APPLICATION).



FOR DEVICES ON DOORS OVER 8'0" TALL, TWO ROD GUIDE BRACKETS SHOULD BE PLACED EQUALLY BETWEEN THE TOP LATCH AND DEVICE HEAD

2. PRIOR TO INSTALLING THE ROD(S), SLIDE VERTICAL ROD THRU ROD GUIDE INSERT (FOR V2 AND TPL2 TPL2 BOTTOM ROD APPLICATION - REMOVE ADJUSTMENT SCREW, SLIDE ON ROD GUIDE INSERT, THEN REATTACH ADJUSTMENT SCREW). CONTINUE WITH DEVICE INSTALLATION.



3. AFTER PERFORMING DEVICE ADJUSTMENT, SWING VERTICAL ROD OUT AND POSITION ROD GUIDE INSERT INTO ROD GUIDE BRACKET. THEN ATTACH ROD GUIDE COVER TO THE ROD GUIDE BRACKET USING TWO #8-32x1/4" UFPHMS SCREWS. CONTINUE WITH DEVICE INSTALLATION.

