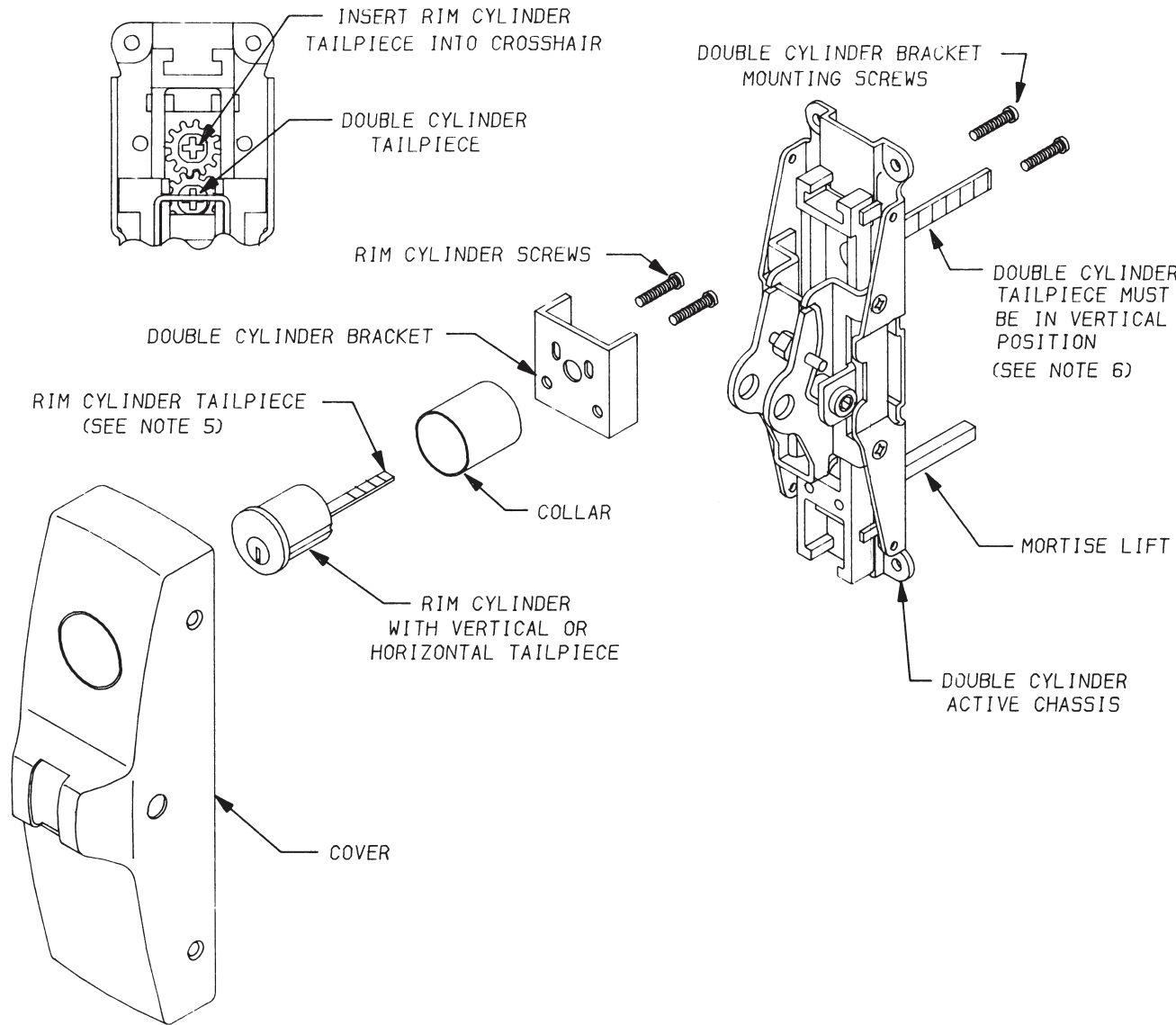




D-1011

FALCON[®] XX-M DOUBLE CYLINDER INSTALLATION INSTRUCTIONS



XX-M DOUBLE CYLINDER INSTALLATION

1. INSTALL MORTISE LOCK INTO DOOR WITH PROPER HANDING. NOTE: DOUBLE CYLINDER LOCKS ARE NOT FIELD REVERSIBLE.
2. REMOVE COVER OF ACTIVE CHASSIS (4 SCREWS) ARM AXLE AND ARM.
3. INSTALL RIM CYLINDER INTO COLLAR AND MOUNTING BRACKET WITH RIM CYLINDER SCREWS.
4. INSTALL MOUNTING BRACKET ASSEMBLY ONTO DEVICE WITH THE RIM CYLINDER TAILPIECE INSERTED INTO CROSSHAIR.
IMPORTANT: THE DOUBLE CYLINDER TAILPIECE REMAINS VERTICAL WHILE INSERTING INTO MORTISE LOCK.
5. BREAK OFF RIM CYLINDER TAILPIECE FLUSH WITH BACK OF DEVICE
6. CHECK DOUBLE CYLINDER TAILPIECE PROJECTION FROM BACK OF DEVICE BY DOOR THICKNESS SEE CHART BELOW.

DOOR THICKNESS	PROJECTION
1 3/4"	7/8"
2 1/4"	1 1/8"

7. PROCEED WITH DEVICE INSTALLATION