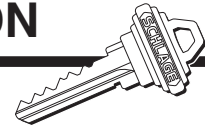




P509-478

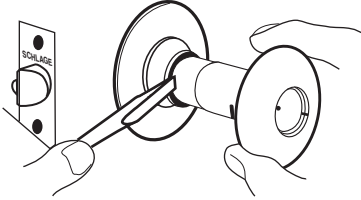


# MA84 PLUNGER BAR INSTALLATION

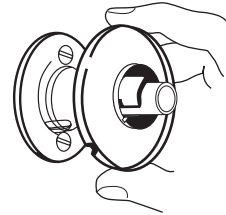


**NOTE:** Follow steps in numbered sequence.

1. Depress knob catch and remove inside knob.



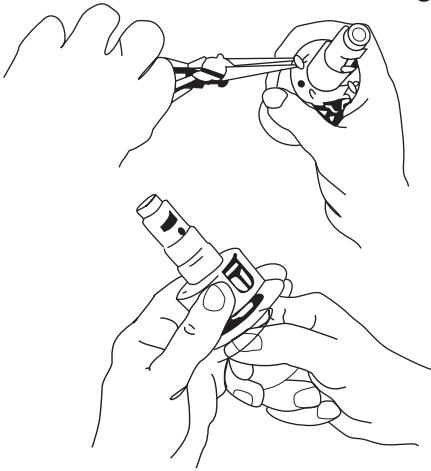
2. Position screw driver into slot on edge of rose and snap off rose.



3. Unscrew mounting screws and remove inside mounting plate.

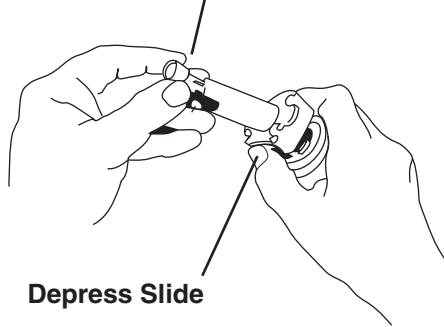
4. Straighten and remove cotter pins. Rotate housing slightly in either direction and remove from lock chassis.

**Remove Cotter Pins & Housing**



5. Depress slide, unhook old plunger by lifting, remove both plunger and spindle.

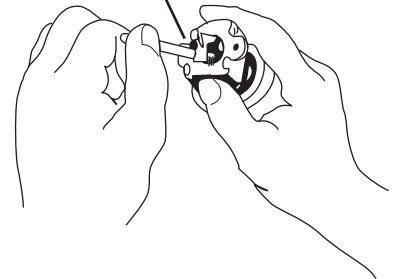
**Unhook & Remove**



**Depress Slide**

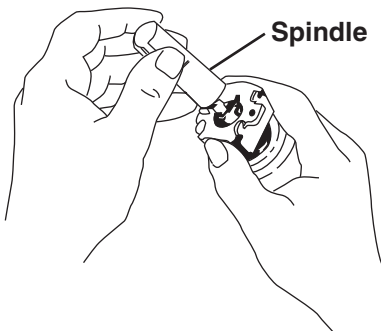
6. Insert new plunger bar (less button assembly), depress slide and push plunger bar while releasing slide to hook into place.

**Insert Bar**



7. Install new spindle over bar, rotate slightly and push into place. (Slot on spindle should be on same side as slide jaws.)

**Spindle**



8. Align plunger button assembly so lug fits into slot on spindle. Position plunger button assembly onto bar and snap firmly into place.

**Snap On Button**



9. Replace housing and lock trim by reversing steps 1 thru 4.

**Customer Service**

1-877-671-7011

[www.allegion.com/us](http://www.allegion.com/us)



© Allegion 2015  
Printed in U.S.A.  
P509-478 Rev. 04/15-c