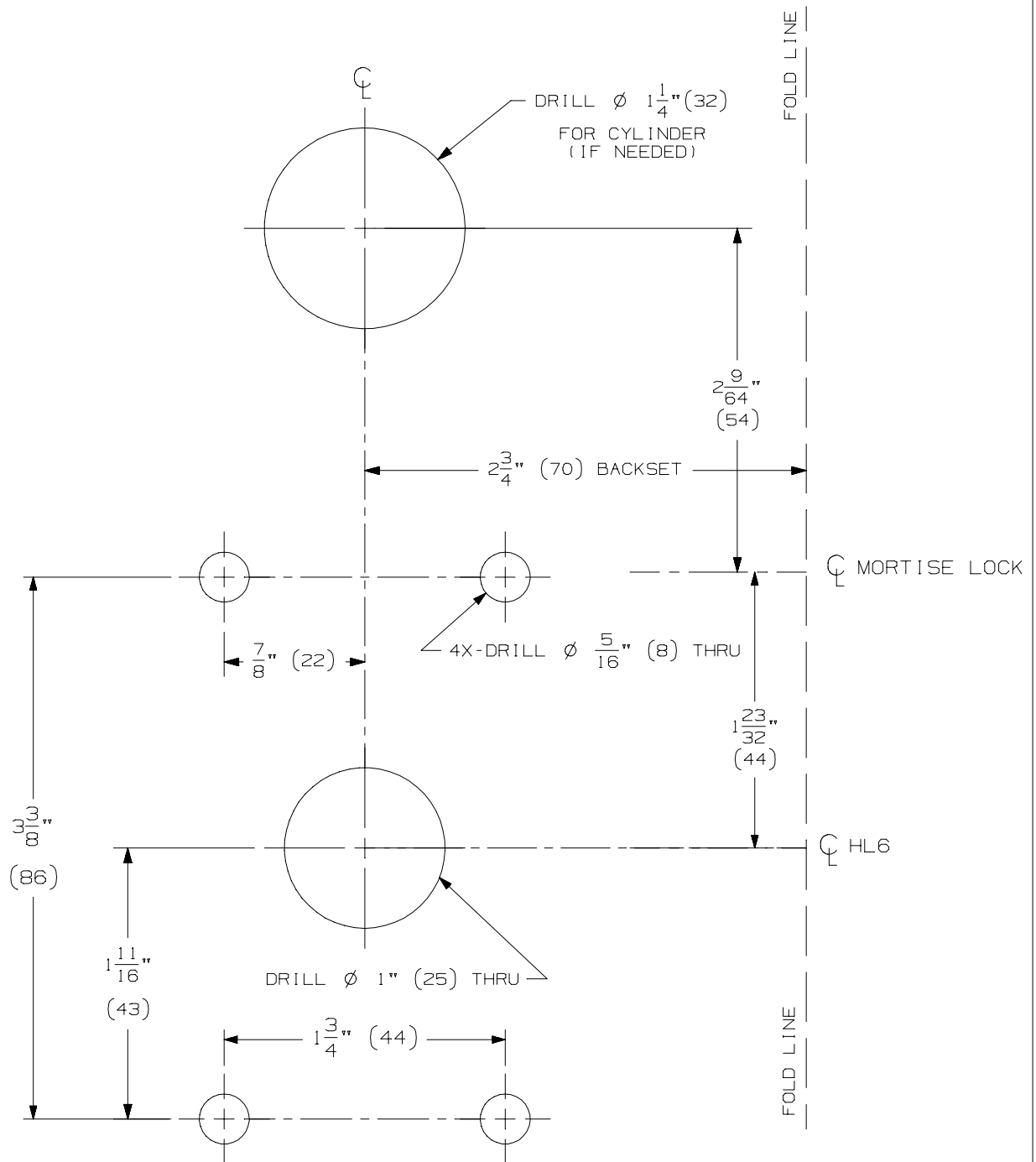


1. FOLD ON DOTTED LINE.
2. PLACE FOLD ON LOW EDGE OF BEVEL.
3. LINE UP CENTER LINES.
4. CENTER PUNCH FOR ϕ 1" (25) HOLE AND THE FOUR ϕ $\frac{5}{16}$ " (8) MOUNTING HOLES.
5. DRILL HOLES



TEMPLATE TO SCALE. DO NOT COPY OR FAX.

NOTE:
 VERTICAL PADDLE MOUNTING CANNOT BE USED WITH LOCKS THAT HAVE THUMBTURNS.
 THOSE LOCKS MUST USE HORIZONTAL PADDLE MOUNTING.
 THE 9040, 9050, 9453, 9456, M9473, 9485 & 9486 MUST USE THE HORIZONTAL
 PADDLE MOUNTING.

GLYNN-JOHNSON

**HL6-9000 VERTICAL PADDLE
 MOUNTING TEMPLATE**

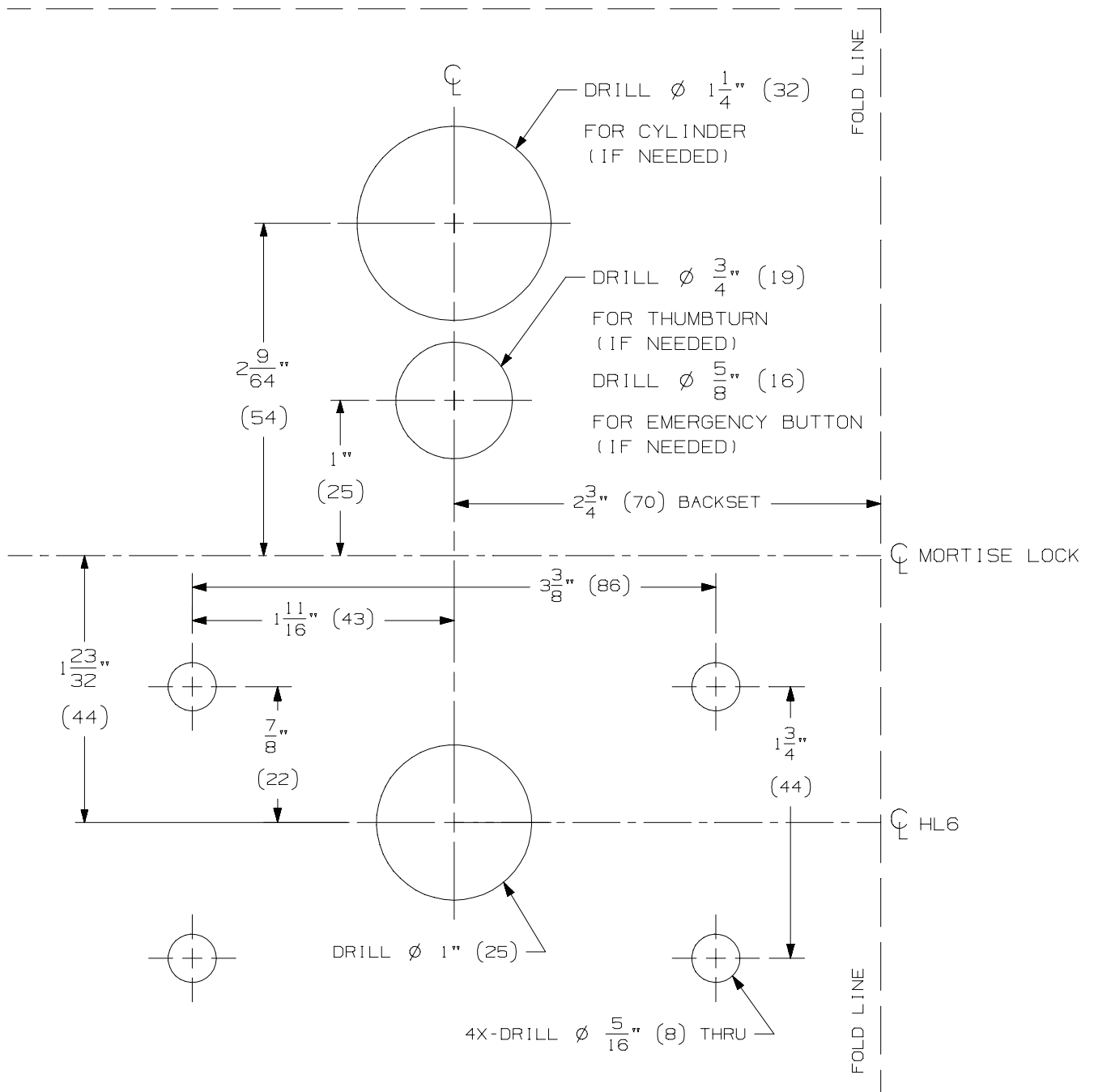


NOTE: DIMENSIONS IN () ARE IN MILLIMETERS

TEMPLATE
 NUMBER: **INST.HL6MBS_B.PG1**

DATE:
05-29-15

1. FOLD ON DOTTED LINE.
2. PLACE FOLD ON LOW EDGE OF BEVEL.
3. LINE UP CENTER LINES.
4. CENTER PUNCH FOR ϕ 1" (25) HOLE AND THE FOUR ϕ $\frac{5}{16}$ " (8) MOUNTING HOLES.
5. DRILL HOLES



TEMPLATE TO SCALE. DO NOT COPY OR FAX.

GLYNN-JOHNSON

**HL6-9000 HORIZONTAL PADDLE
MOUNTING TEMPLATE**



NOTE: DIMENSIONS IN () ARE IN MILLIMETERS

TEMPLATE NUMBER: **INST.HL6MBS_B.PG2**

DATE:
05-29-15