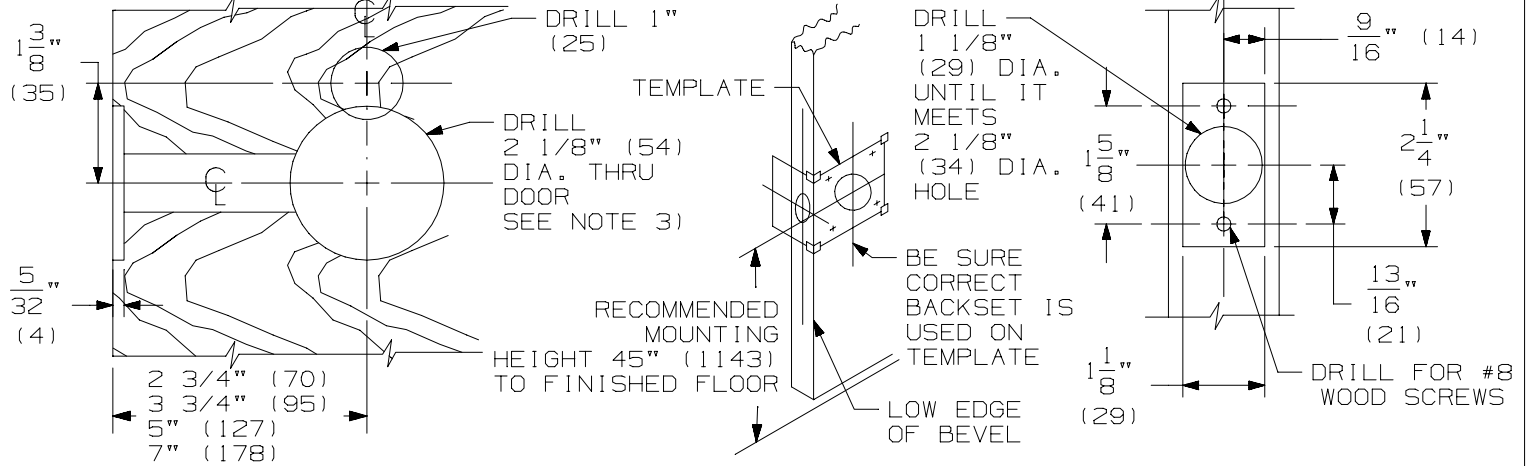


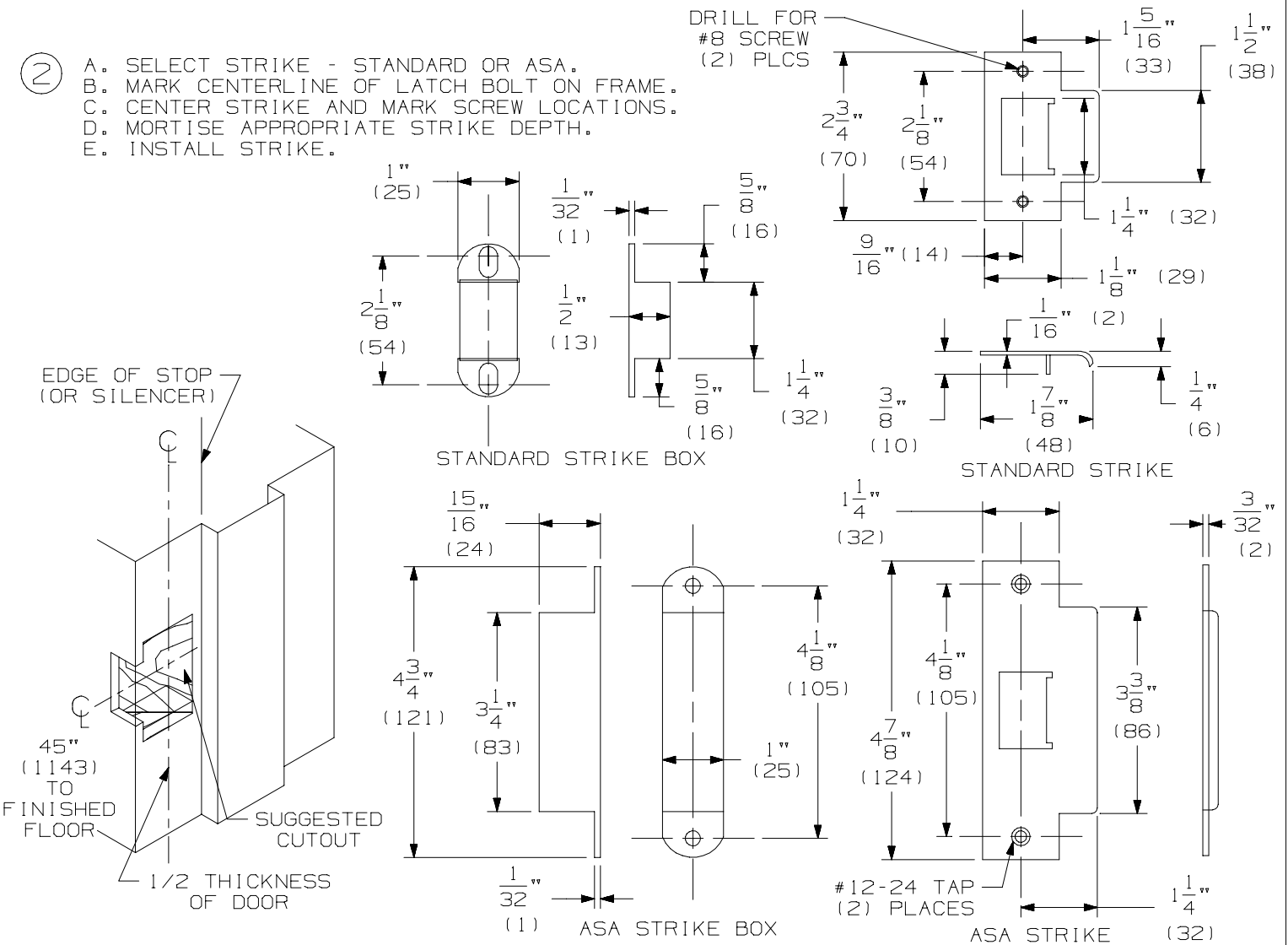
- ① A. INSTALL DOOR.
- B. MARK HORIZONTAL CENTERLINE ON DOOR AND EDGE OF DOOR.
- C. TAPE VERTICAL OR HORIZONTAL TEMPLATE TO THE DOOR (CHECK BACKSET).
- D. PREPARE DOOR FOR MOUNTING HOLES AS INDICATED ON TEMPLATE.

NOTES:

1. WOOD DOOR SHOWN.
2. FOR METAL DOORS USE #161 STANDARD CUTOUT.
3. THE 2 1/8" (54) HOLE CAN BE AS SMALL AS 1 1/16 (27) DIA.
4. LATCHES ARE NOT ADJUSTABLE FOR BEVELED EDGE DOORS.



- ② A. SELECT STRIKE - STANDARD OR ASA.
- B. MARK CENTERLINE OF LATCH BOLT ON FRAME.
- C. CENTER STRIKE AND MARK SCREW LOCATIONS.
- D. MORTISE APPROPRIATE STRIKE DEPTH.
- E. INSTALL STRIKE.



**GLYNN-JOHNSON**

**PL7/PL8 LEAD LINED PRIVACY  
LATCH INSTALLATION TEMPLATE**



NOTE: DIMENSIONS IN ( ) ARE IN MILLIMETERS

TEMPLATE  
NUMBER:

INST.PLL\_B.PG1

DATE:  
05-29-15

- ③
- A. WRAP LEAD AROUND LATCHBOLT.
  - B. INSTALL LATCH BOLT ASSEMBLY WITH RADIUS SIDE OF LATCH BOLT TOWARDS THE PUSH SIDE OF DOOR.
  - C. REMOVE COVERS FROM THE HANDLE ASSEMBLIES.
  - D. CHECK CAM POSITION ON PUSH HANDLE ASSEMBLY. (SEE FIGURE 1)
  - E. INSTALL PUSH HANDLE ASSEMBLY WITH LOCKSHAFT THRU LATCHBOLT ASSEMBLY.
  - F. PLACE LEAD WASHER AROUND LOCKSHAFT.
  - G. CHECK CAM POSITION ON PULL HANDLE ASSEMBLY.
  - H. INSTALL PULL HANDLE ASSEMBLY WITH LOCKSHAFT INSERTED INTO CAM AND THUMBTURN SHAFT ENGAGED.
  - I. INSTALL 4 THRU BOLTS AND NUTS BUT DO NOT TIGHTEN THE NUTS.
  - J. SLIP COVERS ON HANDLE ASSEMBLY.
  - K. TIGHTEN HANDLE MOUNTING SCREWS AND NUTS.
  - L. INSTALL AND TIGHTEN COVER MOUNTING SCREWS.

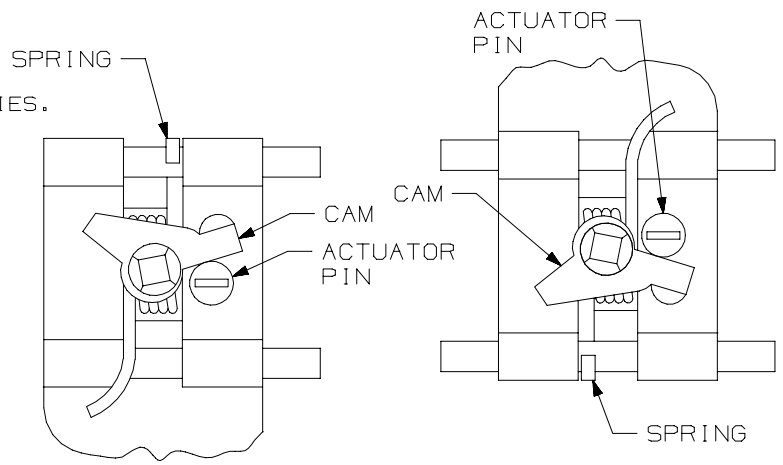


FIGURE 1  
PUSH HANDLE

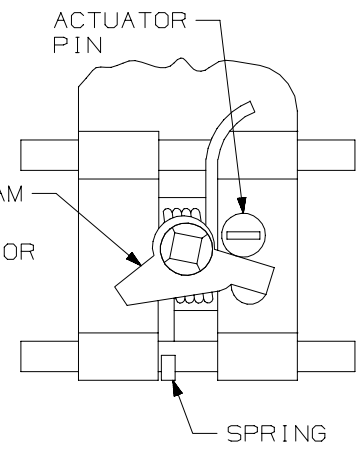


FIGURE 2  
PULL HANDLE

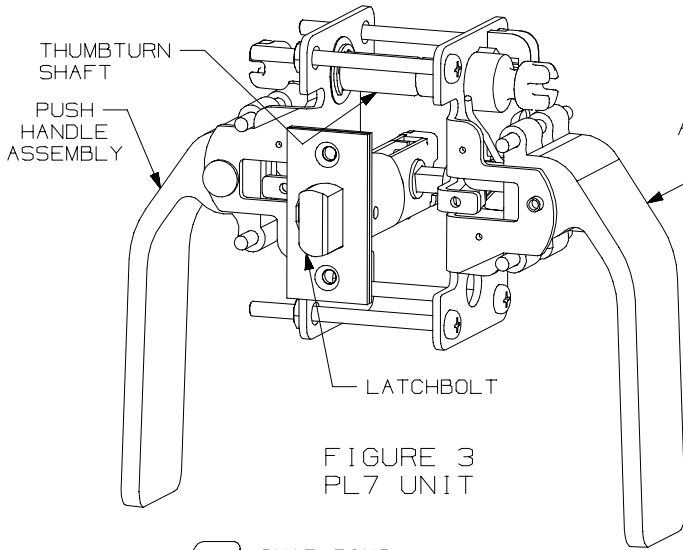


FIGURE 3  
PL7 UNIT

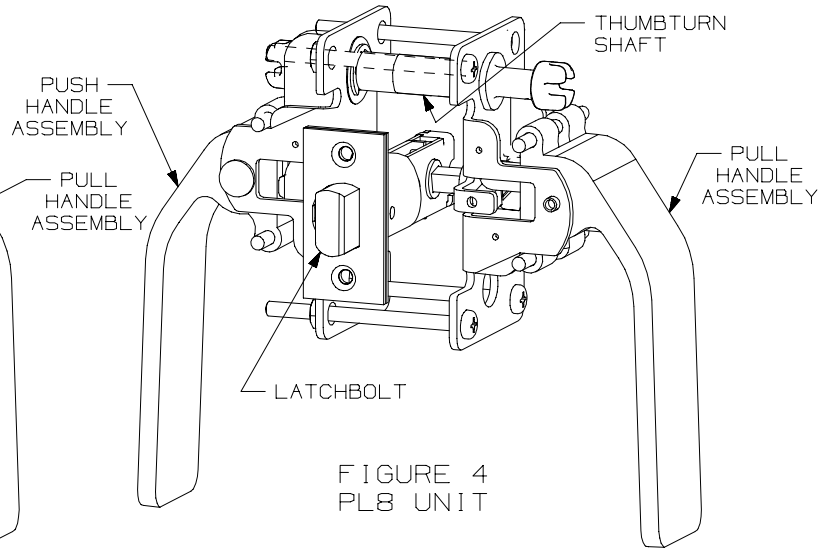


FIGURE 4  
PL8 UNIT

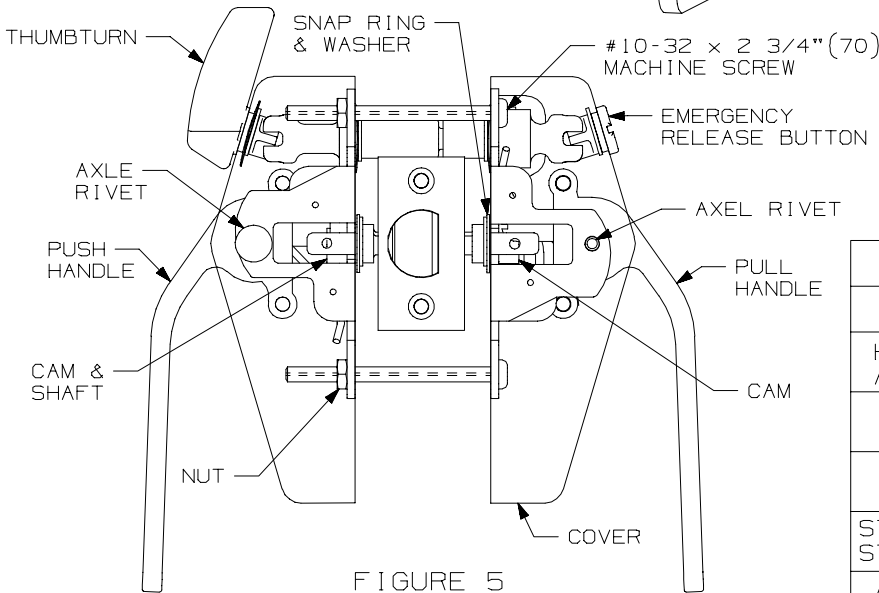


FIGURE 5  
PL7 ASSEMBLY SHOWN

PL8 ASSEMBLY HAS THUMBTURN ON PULL SIDE & EMERGENCY RELEASE BUTTON ON PUSH SIDE

SCREW DETAILS			
	QTY	WOOD	METAL
HANDLE ASSY	4	10-32 x 2 3/4" PPHMS & NUT	10-32 x 2 3/4" PPHMS & NUT
COVER	4	6-32 x 1/4" UFPHMS	6-32 x 1/4" UFPHMS
LATCH BOLT	2	8 x 3/4" FPHSMS	8-32 x 3/4" UFPHMS
STANDARD STRIKE	2	8 x 3/4" FPHSMS	8-32 x 3/4" UFPHMS
ASA STRIKE	2	12 x 3/4" FPHSMS	12-24 x 1/2" UFPHMS

**GLYNN-JOHNSON**

**PL7/PL8 LEAD LINED PRIVACY  
LATCH INSTALLATION TEMPLATE**



NOTE: DIMENSIONS IN ( ) ARE IN MILLIMETERS

TEMPLATE  
NUMBER:

INST.PLL\_B.PG2

DATE:  
05-29-15