


Hardware Checklist		
	Description	Part Number
①	LCN Automatic Operator	LCN 6440 Auto Operator
②	LCN Restroom Kit	LCN 8310-2410 Touchless Restroom Kit
③	Electric Strike (Fail Safe)	Von Duprin 5100 or Equal (24VDC)
④	Door Loop	Included with LCN 6440
⑤	Power Transfer Device	Electrified Hinge, EPT or Door Cord
⑥	Door Position Switch	Included with 8310-2410
⑦	50 Watt Power Adapter	Included with 6440 ADO
⑧	Outside Wave Open Switch	Included with 8310-2410
⑨	Inside Wave to Lock	Included with 8310-2410
⑩	Inside Wave to Open Switch	Included with 8310-2410

**GENERAL NOTES:**  
ALL LOW VOLTAGE WIRE TO RUN IN MINIMUM 3/8" CONDUIT OR INSIDE DRYWALL UNLESS NOTED OTHERWISE  
ALL LOW VOLTAGE WIRE TO BE STRANDED WIRE  
ALL GANG BOXES BY ELECTRICAL CONTRACTOR AS REQUIRED  
ALL LOW VOLTAGE WIRING TO BE LABELED CLEARLY AT BOTH END  
ALL MOUNTING HEIGHTS AS SHOWN  
COORDINATE MOUNTING LOCATIONS WITH ELECTRICAL/ARCHITECTURAL PLANS

**OPERATIONAL DESCRIPTION:**  
DOOR IS NORMALLY CLOSED AND UNLOCKED. EXTERIOR ACTUATOR OR PUSH/PULL ON LEVER TO ENTER BATHROOM. UPON ENTRY USING WAVE TO LOCK SWITCH, ELECTRIC STRIKE WILL BE LOCKED AND EXTERIOR ACTUATOR WILL BE DISABLED AND SHOW RED RING. UPON EXIT, USE INTERIOR ACTUATOR OR LOCKSET TO EXIT ROOM. SYSTEM WILL RESET AND DOOR WILL BE UNLOCKED. FREE EGRESS AT ALL TIMES

**\*\*NOT TO BE USED ON FIRE RATED OPENING\*\***



**ALLEGIION**  
ELECTRIFIED  
ELEVATION  
DRAWINGS

DRAWING:  
**ELEVATION DRAWING**

Drawn By: Jason Relyea DHT, DHC

DATE: 02.02.2023

SCALE: N.T.S.

VERSION: 2

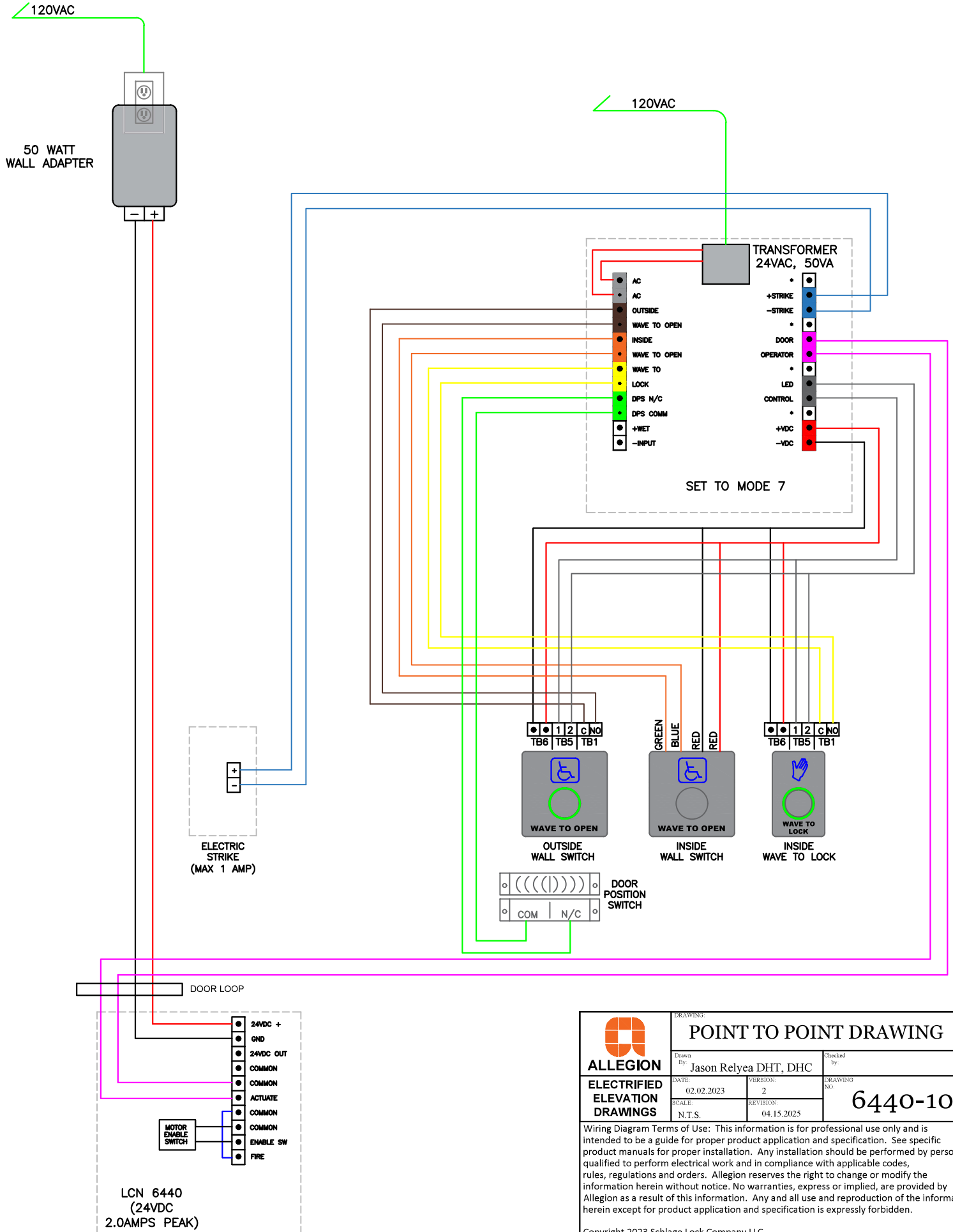
REVISION: 04.15.2025

CHECKED BY:

**6440-10**

Wiring Diagram Terms of Use: This information is for professional use only and is intended to be a guide for proper product application and specification. See specific product manuals for proper installation. Any installation should be performed by persons qualified to perform electrical work and in compliance with applicable codes, rules, regulations and orders. Allegion reserves the right to change or modify the information herein without notice. No warranties, express or implied, are provided by Allegion as a result of this information. Any and all use and reproduction of the information herein except for product application and specification is expressly forbidden.

Copyright 2023 Schlage Lock Company LLC.



 <b>ALLEGION</b>		<b>POINT TO POINT DRAWING</b>	
		Drawn By: Jason Relyea DHT, DHC	Checked by:
<b>ELECTRIFIED ELEVATION DRAWINGS</b>	DATE: 02.02.2023 SCALE: N.T.S.	VERSION: 2 REVISION: 04.15.2025	DRAWING NO.: <b>6440-10</b>
<p>Wiring Diagram Terms of Use: This information is for professional use only and is intended to be a guide for proper product application and specification. See specific product manuals for proper installation. Any installation should be performed by persons qualified to perform electrical work and in compliance with applicable codes, rules, regulations and orders. Allegion reserves the right to change or modify the information herein without notice. No warranties, express or implied, are provided by Allegion as a result of this information. Any and all use and reproduction of the information herein except for product application and specification is expressly forbidden.</p>			
Copyright 2023 Schlage Lock Company LLC.			