


HARDWARE CHECKLIST		
	DESCRIPTION	PART NUMBER
①	LCN AUTOMATIC OPERATOR	LCN 6440 AUTO OPERATOR
②	LCN RESTROOM KIT	LCN 8310-2410 TOUCHLESS RESTROOM KIT
③	ELECTRIC STRIKE (FAIL SECURE)	VON DUPRIN 5100 OR EQUAL (24VDC)
④	DOOR LOOP	INCLUDED WITH LCN 6440
⑤	POWER TRANSFER DEVICE	ELECTRIFIED HINGE, EPT OR DOOR CORD
⑥	DOOR POSITION SWITCH	INCLUDED WITH 8310-2410
⑦	50 WATT POWER ADAPTER	INCLUDED WITH 6440 ADO
⑧	OUTSIDE WAVE OPEN SWITCH	INCLUDED WITH 8310-2410
⑨	INSIDE WAVE TO LOCK	INCLUDED WITH 8310-2410
⑩	INSIDE WAVE TO OPEN SWITCH	INCLUDED WITH 8310-2410
⑪	MTB11/15 CARD READER OR EQUAL	COORDINATE WITH DIV 28 SUPPLIER

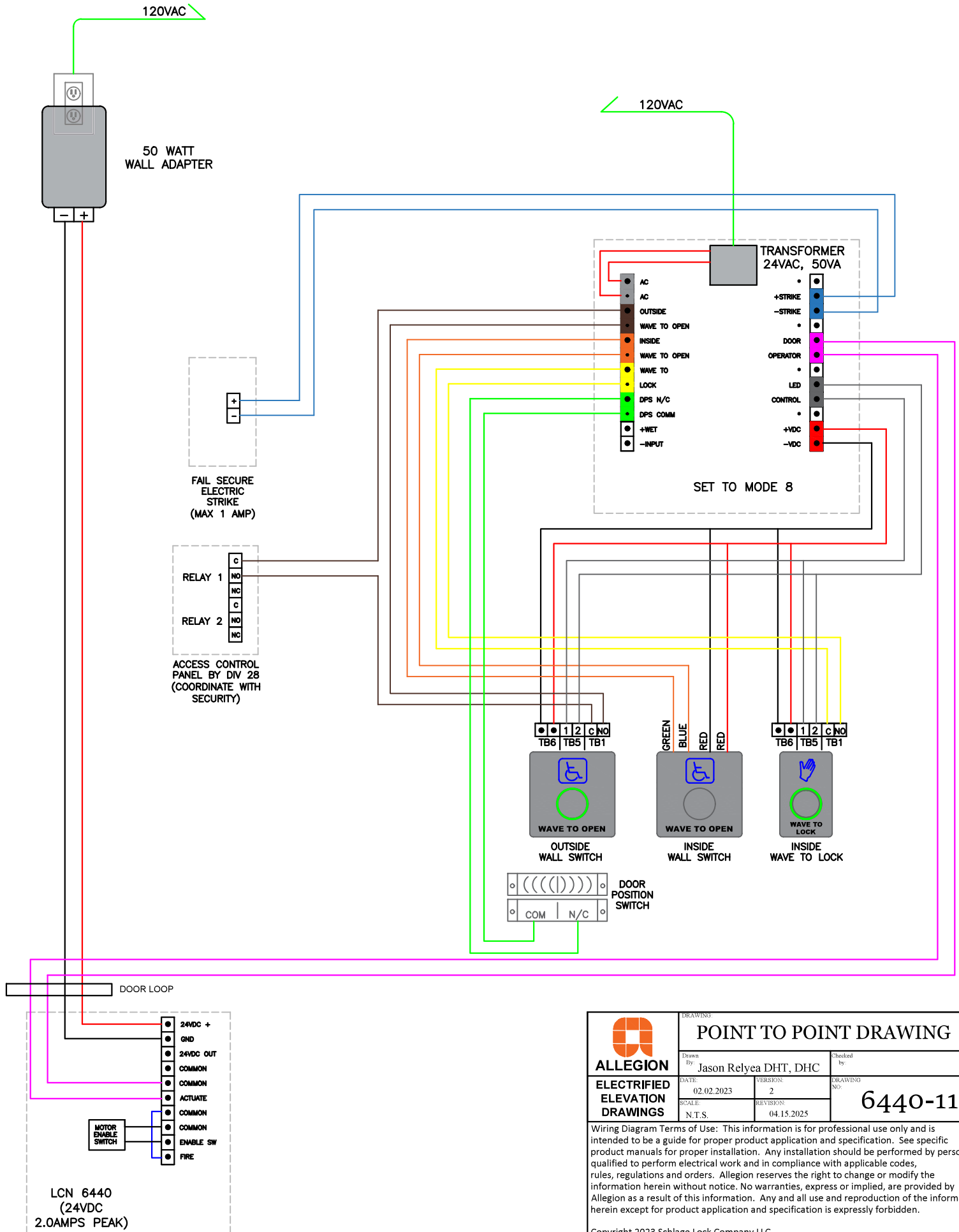
GENERAL NOTES:

ALL LOW VOLTAGE WIRE TO RUN IN MINIMUM 3/8" CONDUIT OR INSIDE DRYWALL UNLESS NOTED OTHERWISE
ALL LOW VOLTAGE WIRE TO BE STRANDED WIRE
ALL GANG BOXES BY ELECTRICAL CONTRACTOR AS REQUIRED
ALL LOW VOLTAGE WIRING TO BE LABELED CLEARLY AT BOTH END
ALL MOUNTING HEIGHTS AS SHOWN
COORDINATE MOUNTING LOCATIONS WITH ELECTRICAL/ARCHITECTURAL PLANS

OPERATIONAL DESCRIPTION:

DOOR IS NORMALLY CLOSED AND LOCKED. PRESENTING VALID CREDENTIAL TO READER WILL ALLOW THE EXTERIOR ACTUATOR TO START THE AUTOMATIC DOOR OPENING SEQUENCE. UPON ENTRY USING WAVE TO LOCK SWITCH, ELECTRIC STRIKE WILL BE LOCKED AND EXTERIOR ACTUATOR WILL BE DISABLED AND SHOW RED RING. UPON EXIT, USE INTERIOR ACTUATOR OR LOCKSET TO EXIT ROOM. SYSTEM WILL RESET AND DOOR WILL BE LOCKED. FREE EGRESS AT ALL TIMES

 ALLEGIION™ ELECTRIFIED ELEVATION DRAWINGS	DRAWING: ELEVATION DRAWING		
	Drawn by: Jason Relyea DHT, DHC		Checked by:
	DATE: 02.02.2023	VERSION: 2	DRAWING NO. 6440-11
	SCALE: N.T.S.	REVISION: 04.15.2025	
<p>Wiring Diagram Terms of Use: This information is for professional use only and is intended to be a guide for proper product application and specification. See specific product manuals for proper installation. Any installation should be performed by persons qualified to perform electrical work and in compliance with applicable codes, rules, regulations and orders. Allegion reserves the right to change or modify the information herein without notice. No warranties, express or implied, are provided by Allegion as a result of this information. Any and all use and reproduction of the information herein except for product application and specification is expressly forbidden.</p>			
Copyright 2023 Schlage Lock Company LLC.			



<p>ALLEGION</p> <p>ELECTRIFIED ELEVATION DRAWINGS</p>		<p>DRAWING NO. POINT TO POINT DRAWING</p>	
		<p>Drawn By: Jason Relyea DHT, DHC</p>	<p>Checked by:</p>
<p>DATE: 02.02.2023</p>	<p>VERSION: 2</p>	<p>DRAWING NO. 6440-11</p>	
<p>SCALE: N.T.S.</p>	<p>REVISION: 04.15.2025</p>	<p>Wiring Diagram Terms of Use: This information is for professional use only and is intended to be a guide for proper product application and specification. See specific product manuals for proper installation. Any installation should be performed by persons qualified to perform electrical work and in compliance with applicable codes, rules, regulations and orders. Allegion reserves the right to change or modify the information herein without notice. No warranties, express or implied, are provided by Allegion as a result of this information. Any and all use and reproduction of the information herein except for product application and specification is expressly forbidden.</p>	
<p>Copyright 2023 Schlage Lock Company LLC.</p>			