

DOOR ELEVATION
N.T.S.


HARDWARE CHECKLIST		
	DESCRIPTION	PART NUMBER
①	LCN AUTOMATIC OPERATOR	LCN 6440 AUTO OPERATOR
②	LCN RESTROOM KIT	LCN 8310-2410 TOUCHLESS RESTROOM KIT
③	ELECTRIFIED MORTISE LOCK	SCHLAGE LX-L9580 FAIL SAFE (24VDC)
④	DOOR LOOP	INCLUDED WITH LCN 6440
⑤	POWER TRANSFER DEVICE	ELECTRIFIED HINGE, EPT OR DOOR CORD
⑥	DOOR POSITION SWITCH	INCLUDED WITH 8310-2410
⑦	65 WATT POWER SUPPLY	LCN 6400-471 (ORDERED SEPARATELY)
⑧	OUTSIDE WAVE OPEN SWITCH	INCLUDED WITH 8310-2410
⑨	INSIDE WAVE TO LOCK	INCLUDED WITH 8310-2410
⑩	INSIDE WAVE TO OPEN SWITCH	INCLUDED WITH 8310-2410
⑪	12/24VDC DPDT RELAY	ALTRONIX RB1224

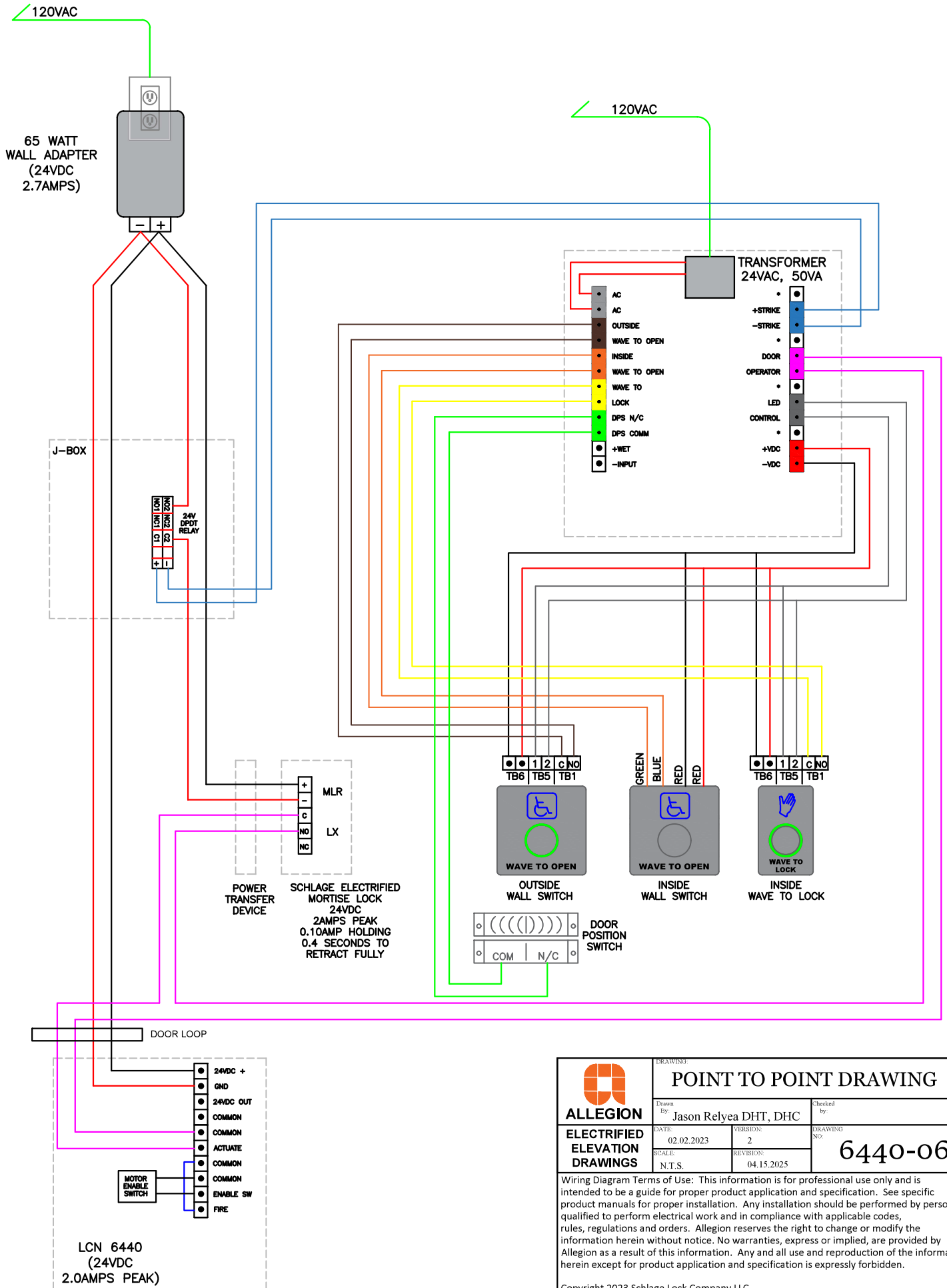
GENERAL NOTES:

ALL LOW VOLTAGE WIRE TO RUN IN MINIMUM 3/8" CONDUIT OR INSIDE DRYWALL UNLESS NOTED OTHERWISE
ALL LOW VOLTAGE WIRE TO BE STRANDED WIRE
ALL GANG BOXES BY ELECTRICAL CONTRACTOR AS REQUIRED
ALL LOW VOLTAGE WIRING TO BE LABELED CLEARLY AT BOTH END
ALL MOUNTING HEIGHTS AS SHOWN
COORDINATE MOUNTING LOCATIONS WITH ELECTRICAL/ARCHITECTURAL PLANS

OPERATIONAL DESCRIPTION:

DOOR IS NORMALLY CLOSED AND LOCKED. EXTERIOR ACTUATOR OR KEY OVER-RIDE TO ENTER UPON ENTRY USING WAVE TO LOCK SWITCH, ELECTRIC LOCK WILL BE LOCKED AND EXTERIOR ACTUATOR WILL BE DISABLED AND SHOW RED RING. UPON EXIT, USE INTERIOR ACTUATOR OR LOCKSET TO EXIT ROOM. SYSTEM WILL RESET AND DOOR WILL BE LOCKED AND LATCHED FREE EGRESS AT ALL TIMES

 ALLEGIION® ELECTRIFIED ELEVATION DRAWINGS	<div>DRAWING</div> <div>ELEVATION DRAWING</div>		
	Drawn By	Jason Relyea DHT, DHC	Checked by
	DATE	VERSION	DRAWING NO.
	SCALE	REVISION	
	N.T.S.	04.15.2025	6440-06
<p>Wiring Diagram Terms of Use: This information is for professional use only and is intended to be a guide for proper product application and specification. See specific product manuals for proper installation. Any installation should be performed by persons qualified to perform electrical work and in compliance with applicable codes, rules, regulations and orders. Allegion reserves the right to change or modify the information herein without notice. No warranties, express or implied, are provided by Allegion as a result of this information. Any and all use and reproduction of the information herein except for product application and specification is expressly forbidden.</p>			
Copyright 2023 Schlage Lock Company LLC.			



<p>ALLEGION</p>		<p>DRAWING NO. POINT TO POINT DRAWING</p>	
		<p>Drawn By: Jason Relyea DHT, DHC</p>	<p>Checked by:</p>
<p>ELECTRIFIED ELEVATION DRAWINGS</p>	<p>DATE: 02.02.2023</p>	<p>VERSION: 2</p>	<p>DRAWING NO. 6440-06</p>
<p>SCALE: N.T.S.</p>	<p>REVISION: 04.15.2025</p>	<p>Wiring Diagram Terms of Use: This information is for professional use only and is intended to be a guide for proper product application and specification. See specific product manuals for proper installation. Any installation should be performed by persons qualified to perform electrical work and in compliance with applicable codes, rules, regulations and orders. Allegion reserves the right to change or modify the information herein without notice. No warranties, express or implied, are provided by Allegion as a result of this information. Any and all use and reproduction of the information herein except for product application and specification is expressly forbidden.</p>	
<p>Copyright 2023 Schlage Lock Company LLC.</p>			