

HARDWARE CHECKLIST		
	DESCRIPTION	PART NUMBER
①	LCN AUTOMATIC OPERATOR	LCN 6440 AUTO OPERATOR
②	HARDWIRED ACTUATOR	LCN 8310 SERIES
③	ELECTRIFIED MORTISE LOCK	SCHLAGE LX-L9692 FAIL SECURE (24VDC)
④	DOOR LOOP	INCLUDED WITH LCN 6440
⑤	POWER TRANSFER DEVICE	ELECTRIFIED HINGE, EPT OR DOOR CORD
⑥	SEQUENCER	CAMDEN CONTROLS CX-33 SEQUENCER
⑦	POWER SUPPLY	VON DUPRIN PS904 X 900-8F (900-FA AS REQ'D)
⑧	OCCUPANCY INDICATOR	CAMDEN CONTROLS CM-AF500 INDICATOR
⑨	PUSH TO LOCK	CAMDEN CONTROLS CM-AF550R BUTTON
⑩	DOOR POSITION SWITCH	679-05 WD/HM OR EQUAL

GENERAL NOTES:

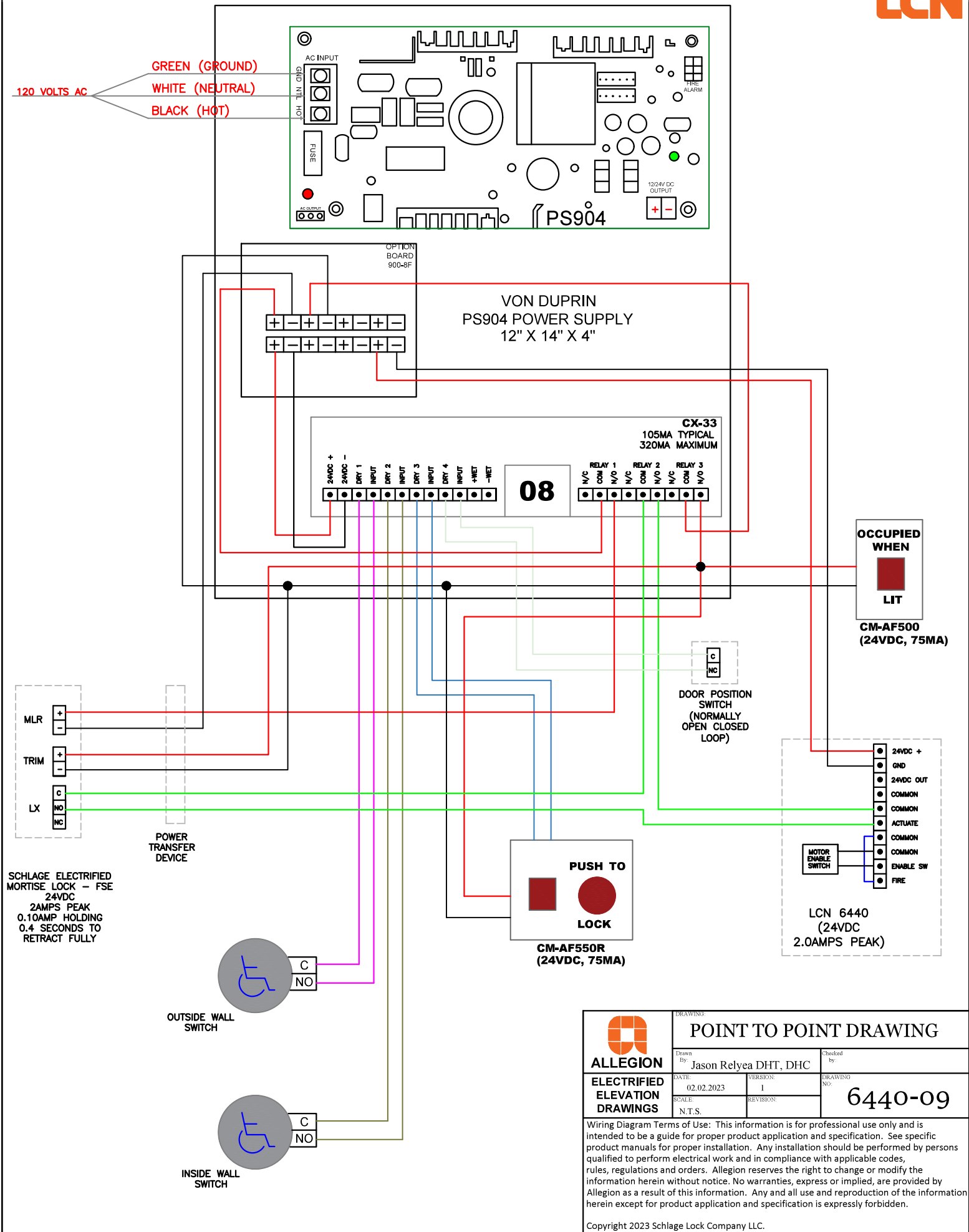
ALL LOW VOLTAGE WIRE TO RUN IN MINIMUM 3/8" CONDUIT OR INSIDE DRYWALL UNLESS NOTED OTHERWISE
 ALL LOW VOLTAGE WIRE TO BE STRANDED WIRE
 ALL GANG BOXES BY ELECTRICAL CONTRACTOR AS REQUIRED
 ALL LOW VOLTAGE WIRING TO BE LABELED CLEARLY AT BOTH END
 ALL MOUNTING HEIGHTS AS SHOWN
 COORDINATE MOUNTING LOCATIONS WITH ELECTRICAL/ARCHITECTURAL PLANS


OPERATIONAL DESCRIPTION:

DOOR NORMALLY CLOSED AND UNLOCKED. ACCESS EITHER MANUALLY BY PUSHING/PULLING THE DOOR OR AUTOMATICALLY BY OUTSIDE WALL SWITCH. ONCE INSIDE THE BATHROOM WITH DOOR CLOSED, PRESSING THE PUSH TO LOCK BUTTON, ILLUMINATES THE OCCUPIED WHEN LIT AND DISABLES THE OUTSIDE WALL SWITCH. EGRESS EITHER MANUALLY OR BY INSIDE WALL SWITCH, WHICH WILL ALSO RESET THE SYSTEM. IN THE EVENT OF LOSS OF POWER, AND WHEN IN USE, DOOR REMAINS LOCKED.

FREE EGRESS AT ALL TIMES

ELEVATION DRAWING			
 ALLEGIION ELECTRIFIED ELEVATION DRAWINGS	DRAWING: Jason Relyea DHT, DHC		Checked by:
	DATE:	VERSION:	DRAWING NO: 6440-09
	02.02.2023	2	
	SCALE:	REVISION:	
	N.T.S.	04.15.2025	
Wiring Diagram Terms of Use: This information is for professional use only and is intended to be a guide for proper product application and specification. See specific product manuals for proper installation. Any installation should be performed by persons qualified to perform electrical work and in compliance with applicable codes, rules, regulations and orders. Allegion reserves the right to change or modify the information herein without notice. No warranties, express or implied, are provided by Allegion as a result of this information. Any and all use and reproduction of the information herein except for product application and specification is expressly forbidden.			
Copyright 2023 Schlage Lock Company LLC.			



 ALLEGION		POINT TO POINT DRAWING	
Drawn By: Jason Relyea DHT, DHC		Checked by:	
DATE: 02.02.2023	VERSION: 1	DRAWING NO: 6440-09	
SCALE: N.T.S.	REVISION:		
<p>Wiring Diagram Terms of Use: This information is for professional use only and is intended to be a guide for proper product application and specification. See specific product manuals for proper installation. Any installation should be performed by persons qualified to perform electrical work and in compliance with applicable codes, rules, regulations and orders. Allegion reserves the right to change or modify the information herein without notice. No warranties, express or implied, are provided by Allegion as a result of this information. Any and all use and reproduction of the information herein except for product application and specification is expressly forbidden.</p>			
Copyright 2023 Schlage Lock Company LLC.			