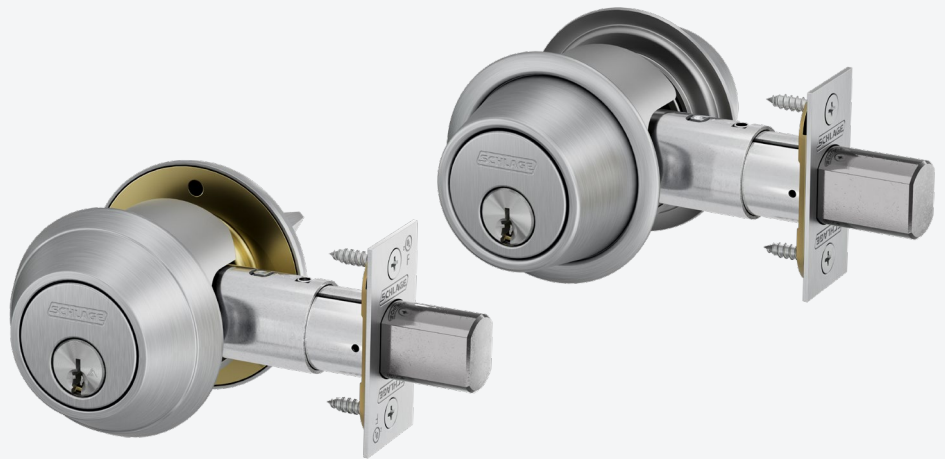




# B Series

## Grade 1 & Grade 2 Deadbolt Locks



### Overview

Schlage® B Series encompasses Grade 1 and Grade 2 deadbolts, plus the Grade 2 [B250 deadlatch](#). These auxiliary locks can be used many ways: providing added security on exterior doors or serving as a primary lock on certain interior doors where the use of status indication is of value. They can also protect common use areas like pool gates and storage/utility spaces from unauthorized access.

B Series offers flexible solutions with a full range of functions, finishes, and key system options that work cohesively within your facility. As with every Schlage lock, B Series deadbolts undergo intensive testing to ensure quality, durability and performance.

### The Added Benefits of Layered Key System Security Features

A strong lock is only part of the security equation—proper key security is equally important.

- Patented Everest 29™ cylinders prohibit unauthorized key duplication at local retail stores
- Dealer and end user restricted, geographically exclusive Primus cylinder options for advanced key control
- UL 437 listed option resists drilling and physical attack on the cylinder

B Series Cylinder Arrangements									
Cylinder type	Conventional			FSIC			SFIC		
	P	P6	Z	R	T	M	G	H	BDC
Everest 29	•	•	•	•	•	•	•	•	•
Primus		•	•	•		•	•		
Primus UL 437		•	•						

#### Legend

- |                                     |  |   |
|-------------------------------------|--|---|
| <b>Conventional cylinders</b>       | <b>FSIC - Full size interchangeable core</b> | <b>SFIC - Small format interchangeable core</b> |
| <b>P6</b> 6-pin cylinder (default)  | <b>R</b> FSIC, 6-pin                         | <b>G</b> SFIC, 7-pin                            |
| <b>P</b> 6-pin cylinder, keyed 5    | <b>T</b> FSIC - construction core            | <b>H</b> Refundable construction SFIC           |
| <b>Z</b> Everest SL cylinder, 7-pin | <b>M</b> Everest SL - FSIC, 7-pin            | <b>BDC</b> Disposable construction SFIC         |

### Features & Benefits

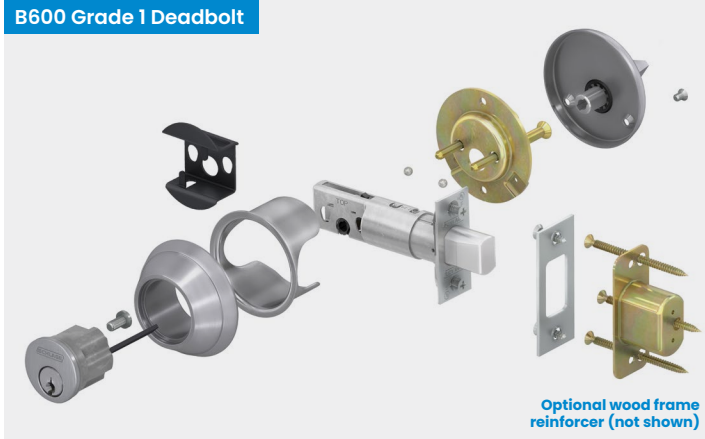
The B Series deadbolts are designed for security and privacy applications.

- Ten standard finishes, plus an antimicrobial coating option
- ADA compliant thumbturn designs
- Visual status indication trim options
- BAA compliant
- Locks are ANSI/BHMA Grade 1 and Grade 2 certified
- Supports Conventional, FSIC, and SFIC cylinder formats plus high security UL 437 and competitive core options
- Multiple key system options include open, patented, restricted, and geographically exclusive

### Applications

As an auxiliary lock deadbolts can be used many places and with indication trim can have even broader application.

- Resident entries
- Storage lockers
- Main entry doors with key-operated locks
- Single-, family- or assisted-use restrooms
- Multi-stall restrooms
- Egress doors serving exterior spaces
- Focus rooms
- Lactation rooms
- Dressing rooms



B600 Series Grade 1		B500 Series Grade 2
<b>Security Features</b>		
Bolt size	1" housing diameter; 0.81" x 0.62" x 1" throw	
Bolt material	Sintered steel	Solid zinc
Anti-saw pin	Hardened steel	
Dust box	Metal with three 3" screws for greater protection against kick-in attacks	
Strike reinforcer	Optional - reinforces wood door frames	—
Security shield	Protects against manipulation of the cylinder driver through the door	
Spin/trim ring	Broadly angled and made of solid zinc to prevent wrenching attacks	Stamped trim ring over solid zinc spin ring
Anti-drill feature	Hardened steel ball-bearings	—
Torx screws	Optional - prevents tampering on interior side	—
Cylinder housing	Solid zinc	Solid zinc
<b>Application</b>		
Fire-rating	All functions UL 10C listed, 3-hour	Upgradeable to UL 10C listed, 3-hour except B562 function
Door thickness	Standard: 1-5/8" to 2" conventional or FSIC; 1-3/4" to 2" SFIC; 1-3/8" to 2-1/2" door bolt only; optional ranges available	Standard: 1-3/8" to 2-1/4" conventional cylinder or door bolt; 1-3/8" to 2" FSIC or SFIC
Functions	5 Keyed; 2 Non-keyed	4 Keyed; 3 Non-keyed
Trims	Most functions available with optional lock status visual indication	
<b>Installation Ease</b>		
Backset	Adjustable, 2-3/8" (60 mm) or 2-3/4" (70 mm) lock in place helix design Optional 2-3/8", 2-3/4", 3-3/4" and 5" fixed	Adjustable, 2-3/8" (60 mm) or 1-7/8" (43 mm) lock in place helix design Optional 5" fixed
Anti-pry shield	Removeable for 1.5" cross bore installations	Removeable for 1.5" cross bore installations (Note: alters exterior appearance)
Options	<ul style="list-style-type: none"> <li>Hollow metal door reinforcer available</li> <li>Tamper-resistant Torx screws optional</li> <li>Thick door kits to 4" available</li> </ul>	Hollow metal door reinforcer available
<b>Cylinders &amp; Key Systems</b>		
Cylinder formats	5- and 6-pin Conventional; 6-pin FSIC; 7-pin SFIC; 7-pin SL cylinders in Conventional and FSIC formats	
Keying	Classic Obverse, Everest and Everest 29 open and restricted keyways	
Upgraded security options	Primus XP Everest 29 or Primus RP Classic Obverse (conventional and FSIC formats) High-security: Primus UL 437 (conventional)	

## Visual Differences

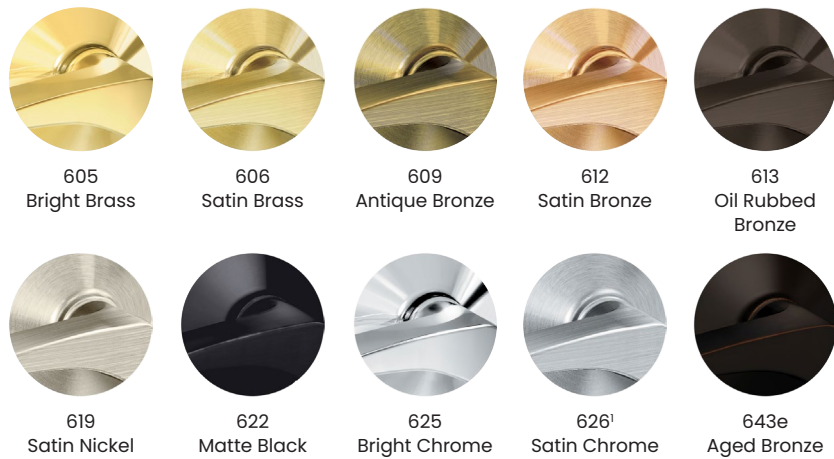
### B600 Series



### B500 Series



## Finishes



e = an equivalent finish to the BHMA standard.

1. Available in 626AM antimicrobial coated option.

## B600 with Indication



## B500 with Indication



### Indicator Trim

Conventional/FSIC/SFIC Key Cylinder			
Escutcheon		Projection	
Height	4.125"	Thumbturn side	1.32"
Width	2.54"	Cylinder side	1.28"

### Indicator Trim

Conventional/FSIC/SFIC Key Cylinder			
Escutcheon		Projection	
Height	4.125"	Thumbturn side	0.92"
Width	2.54"	Cylinder side	1.28"

### Standard Trim

Conventional Key Cylinder			
Thumbturn side		Cylinder side	
Rose diameter	2.57"	Spin ring diameter	1.98"
Projection	1.22"	Projection	0.85"

### Standard Trim

Conventional Key Cylinder			
Thumbturn side		Cylinder side	
Rose diameter	2.57"	Spin ring diameter	1.98"
		Anti-pry shield diameter	2.5"
Projection	0.78"	Projection	0.59"

FSIC/SFIC Key Cylinder			
Thumbturn side		Cylinder side	
Rose diameter	2.57"	Spin ring diameter	1.98"
Projection	1.22"	Projection	1.12"

FSIC/SFIC Key Cylinder			
Thumbturn side		Cylinder side	
Rose diameter	2.57"	Spin ring diameter	1.98"
		Anti-pry shield diameter	2.5"
Projection	0.78"	Projection	0.89"

Available Messages		
	LOCKED	OCCUPIED
	UNLOCKED	VACANT
Inside trim	IS-LOC	IS-OCC
Outside trim	OS-LOC	OS-OCC
Inside trim (Française)	IS-LOCFR	IS-OCCFR
Outside trim (Française)	OS-LOCFR	OS-OCCFR

**ADA Compliant:** Schlage Lock Company offers a wide selection of locks designed to meet the Americans with Disabilities Act. Thumbturns on B Series deadbolts are ADA compliant.

Note: Spanish language options available via RFQ.



# Product Specifications

	B600 Grade 1 Deadbolt	B500 Grade 2 Deadbolt
<b>Construction</b>		
Cylinder housing & trim	Solid zinc cylinder housing (interior B662 housing is brass); 7/8" depth solid zinc trim ring	Solid zinc cylinder housing; 1" depth wrought brass trim ring over solid zinc spin ring
Lock status indication trim	Pressure cast zinc with high-density polycarbonate window and steel backplate	
Roses & thumbturns	Thumbturn is pressure cast zinc, rose is brass; both are plated or powder coated to match finish	
Cylinders & keys	Solid brass cylinder construction supplied with two nickel silver keys per lock	
Finishes	Ten available: 605, 606, 609, 612, 613, 619, 622, 625, 626, 643e; optional antimicrobial coating is available on 626 – order as 626AM	
<b>Locking Mechanisms</b>		
Deadbolt or latch	Solid, sintered steel 0.81" x 0.62" bolt with concealed hardened steel anti-saw pin insert; 1" housing diameter, 1" throw	Solid zinc 0.81" x 0.62" bolt with concealed hardened steel anti-saw pin insert; 1" housing diameter, 1" throw
Backset	Standard: Adjustable 2-3/8" or 2-3/4" (60 mm or 70 mm) Fixed backset options available	Adjustable for 2-3/8" or 2-3/4" (60 or 70 mm)
Handing	—	—
Faceplate	1-1/8" x 2-1/4" (29 mm x 57 mm), square corner faceplate standard. Options include circular drive-in style.	1" x 2-1/4" (25 mm x 57 mm), square corner faceplate standard. Options include round corner and circular drive-in styles.
Strikes & dust boxes	1-1/8" x 2-3/4" (29 mm x 70 mm), square corner; options available. Dust box is metal with 3" screws standard.	1-1/8" x 2-3/4" (29 mm x 70 mm), square corner; options available. Dust box is metal with 3" screws standard.
<b>Installation</b>		
Door thickness	Standard: 1-5/8" to 2" (41 mm to 51 mm) conventional or FSIC cylinder; 1-3/4" to 2" (44 mm to 51 mm) SFIC; 1-3/8" to 2-1/2" (35 mm to 63 mm) door bolt only.	Standard: 1-3/8" to 1-7/8" (35 mm to 43 mm) conventional cylinder or thumbturn only; 1-5/8" to 2" (41 mm to 51 mm) FSIC or SFIC
Attachment	Mounting screws through-bolt to cylinder housing supported by a steel mounting plate. Metal dust box is anchored to frame with three 3" screws. Optional wood frame reinforcer available.	Mounting screws through-bolt to cylinder housing supported by a steel mounting plate. Metal dust box is anchored to frame with three 3" screws.
<b>Cylinders &amp; Key Systems</b>		
Cylinder format	6-pin Conventional (standard); also available in FSIC, SFIC and 7-pin SL cylinder formats (SFIC not available in B250 Series)	
Keyway	Patented Everest 29 S123 (standard); also available in open and restricted keyway families. Primus XP security levels available along with master keying and construction keying.	
<b>Warranty</b>		
	3-year limited mechanical warranty. See <a href="https://us.allegion.com/warranty">us.allegion.com/warranty</a> for details.	
<b>Certifications</b>		
ANSI/BHMA	ANSI/BHMA A156.36-2020, Grade 1 auxiliary lock With FSIC interchangeable core cylinders: Grade 2 With SFIC interchangeable core cylinders: Grade 3	ANSI A156.36-2020, Grade 2 auxiliary lock (except B581) With SFIC interchangeable core cylinders: Grade 3
UL/cUL	UL 10C and CAN/ULC-S104 listed <ul style="list-style-type: none"> <li>• 3-hour fire rated as auxiliary locks</li> <li>• Letter F and UL symbol on latch front indicate listing</li> </ul> UL 10B listed for neutral pressure doors UL 437 listed when using Primus high-security UL 437 cylinder	Available deadbolt option is UL 10C and CAN/ULC-S104 listed (except B562) <ul style="list-style-type: none"> <li>• 3-hour fire rated as auxiliary locks</li> <li>• Letter F and UL symbol on latch front indicate listing</li> </ul> UL 10B listed for neutral pressure doors UL 437 listed when using Primus high-security UL 437 cylinder
FL Building Code	Complies with Florida Building Code TAS 201, 202, 203 (wind and impact zone [HVHZ]) and ANSI-ASTM E330 (wind only)	—
Federal	BAA compliant, all functions	
Other	ADA compliant thumbturn	

# Ordering Information

Required for all lock orders				Options					Keying					
Brand	Series + Function <i>B500: For optional UL Listed + F</i>	Cylinder type <i>keyed functions only</i>	Outside finish	Inside finish	Deadlatch/deadbolt	Strike	Door thickness	Indicator	Strike reinforcer	Screw option	Buy America Act compliant	Keying code	Keyway	Pack keys independently
1	2	3	4	5	6	7	8	9A	9B	9C	9D	10A	10B	10C

Only required if different than outside finish

Only required when deviating from the product's default. Specify only the deviated attribute(s).

Only required when deviating from the product's default. Specify only the deviated attribute(s).

## Example

**B560 . P6 . 626 . 10-092**  
2            3            4            7

Selected strike is different than the default strike

Detail																	
1	Brand	Specify SCH for Schlage (required only when specifying a product Less "LLL" any attribute)															
2	Series + Function	Specify B + function choice from list (to order optional UL listed fire-rated bolt on B500 series locks add "F" to the function)															
3	Cylinder type (specify code for keyed functions only)	<table border="0"> <tr> <td><b>Conventional cylinders</b></td> <td><b>FSIC - Full size interchangeable core</b></td> <td><b>SFIC - Small format interchangeable cores</b></td> </tr> <tr> <td><b>P6</b> 6-pin cylinder (default)</td> <td><b>R</b> FSIC, 6-pin<sup>1</sup></td> <td><b>G</b> SFIC, 7-pin<sup>1</sup></td> </tr> <tr> <td><b>P</b> 6-pin cylinder, keyed 5</td> <td><b>T</b> FSIC - Construction Core<sup>1</sup></td> <td><b>H</b> Refundable Construction SFIC<sup>1</sup></td> </tr> <tr> <td><b>Z</b> Everest SL cylinder, 7-pin</td> <td><b>M</b> Everest SL - FSIC, 7-pin<sup>1</sup></td> <td><b>BDC</b> Disposable Construction SFIC<sup>1</sup></td> </tr> <tr> <td><b>L</b> Less Schlage cylinder</td> <td><b>J</b> Less Schlage FSIC</td> <td><b>B</b> Less SFIC</td> </tr> </table>	<b>Conventional cylinders</b>	<b>FSIC - Full size interchangeable core</b>	<b>SFIC - Small format interchangeable cores</b>	<b>P6</b> 6-pin cylinder (default)	<b>R</b> FSIC, 6-pin <sup>1</sup>	<b>G</b> SFIC, 7-pin <sup>1</sup>	<b>P</b> 6-pin cylinder, keyed 5	<b>T</b> FSIC - Construction Core <sup>1</sup>	<b>H</b> Refundable Construction SFIC <sup>1</sup>	<b>Z</b> Everest SL cylinder, 7-pin	<b>M</b> Everest SL - FSIC, 7-pin <sup>1</sup>	<b>BDC</b> Disposable Construction SFIC <sup>1</sup>	<b>L</b> Less Schlage cylinder	<b>J</b> Less Schlage FSIC	<b>B</b> Less SFIC
<b>Conventional cylinders</b>	<b>FSIC - Full size interchangeable core</b>	<b>SFIC - Small format interchangeable cores</b>															
<b>P6</b> 6-pin cylinder (default)	<b>R</b> FSIC, 6-pin <sup>1</sup>	<b>G</b> SFIC, 7-pin <sup>1</sup>															
<b>P</b> 6-pin cylinder, keyed 5	<b>T</b> FSIC - Construction Core <sup>1</sup>	<b>H</b> Refundable Construction SFIC <sup>1</sup>															
<b>Z</b> Everest SL cylinder, 7-pin	<b>M</b> Everest SL - FSIC, 7-pin <sup>1</sup>	<b>BDC</b> Disposable Construction SFIC <sup>1</sup>															
<b>L</b> Less Schlage cylinder	<b>J</b> Less Schlage FSIC	<b>B</b> Less SFIC															
4	Outside finish	Input ANSI finish code															
5	Inside finish	Specify only if different than outside design choices or if specifying a product Less (LLL) any attribute															
6	Deadbolt	Leave blank, specify LLL for less deadbolt, or specify part number if different from default deadbolt. <b>B500 Series:</b> Default deadbolt 12-288: square corner, 1" x 2-1/4", 1" housing diameter, adjustable 2-3/8" or 2-3/4" backset <b>B600 Series:</b> Default deadbolt 12-296: square corner, 1-1/8" x 2-1/4", 1" housing diameter, adjustable 2-3/8" or 2-3/4" backset															
7	Strike	Leave blank, specify LLL for less strike, or specify part number if different from default strike <b>B500 Series:</b> Default strike: square corner, 1-1/8" x 2-3/4" <b>B600 Series:</b> Default strike: square corner, 1-1/8" x 2-3/4"															
8	Door thickness	Specify only attributes that deviate from these defaults: <b>B500 and B600 Series:</b> 1-5/8" to 2"; 1-3/8" doors cannot use interchangeable cores															
9	Options	Specify desired additional options: <b>B500 and B600 Series:</b> <b>9A:</b> Specify message code (i.e. OS-LOC); <b>9B:</b> Specify 37-016; <b>9C:</b> For specialized or additional screws specify J250-028 for 2" strike reinforcement screws; SCRSTD for additional standard screws; Torx (for tamper resistant screws (not available for SFIC locks); <b>9D:</b> Specify BAA															
10	Keying	Specify only attributes that deviate from these defaults: <b>10A:</b> Keyed Different (KD) <b>10B:</b> Everest 29 S123 (Conventional and FSIC cylinders) or, if masterkeyed, Everest 29 S145 (Conventional and FSIC), and R125 (SFIC - available on B500 and B600 deadbolts only) <b>10C:</b> Specify only when requesting that keys be packed independently															

1. B664 function is not compatible with FSIC nor SFIC cores.