

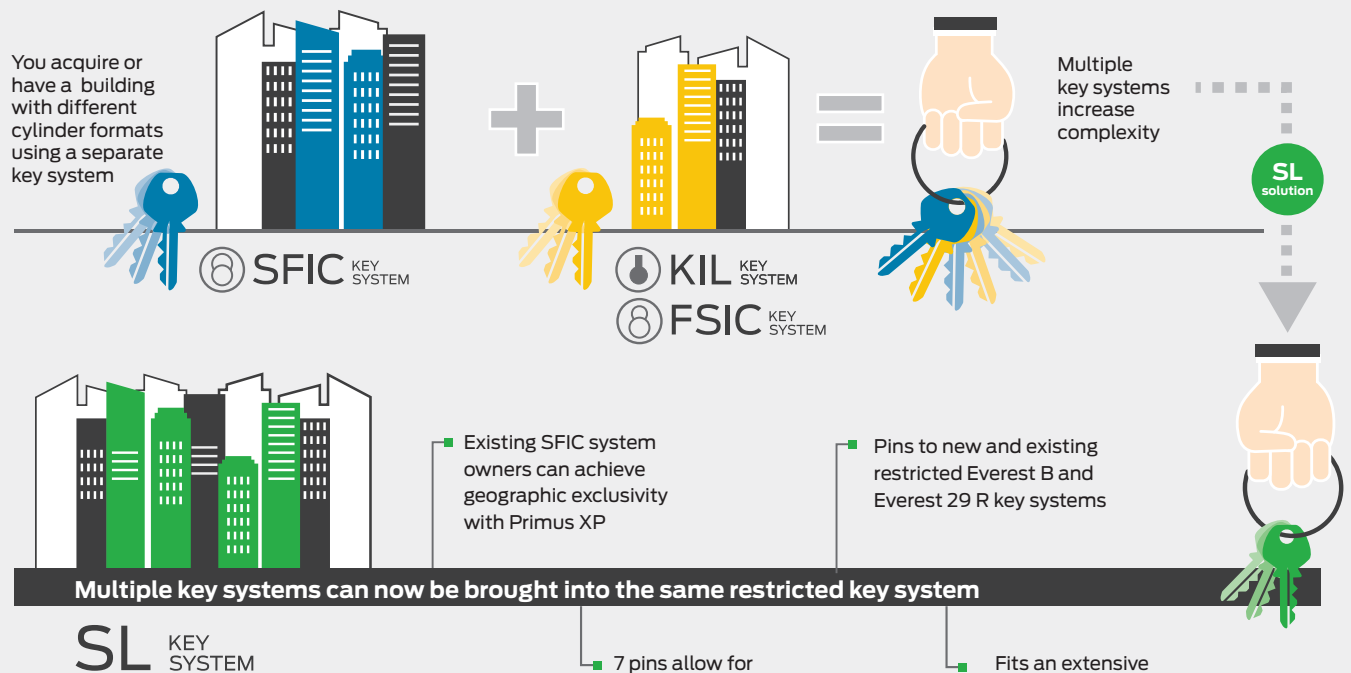


Everest 29™ SL

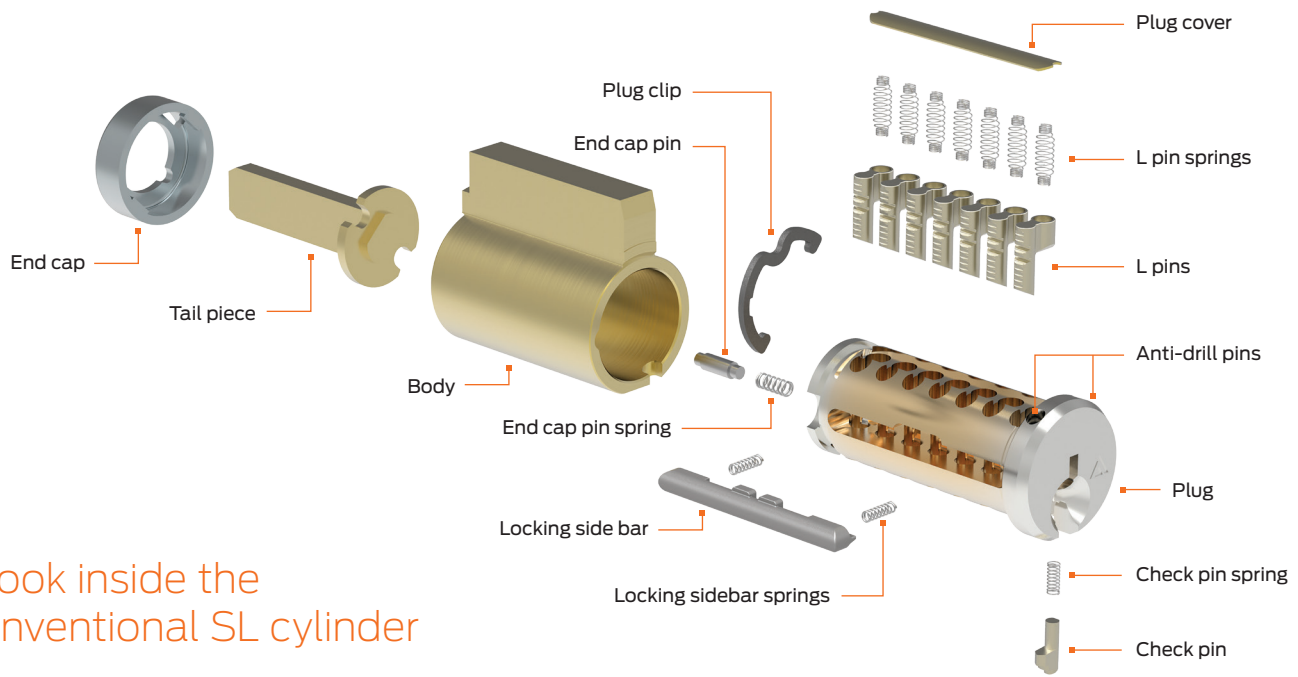
7-pin full size cylinders



Everest 29™ SL cylinders provide users capabilities never before offered by Schlage. An SL cylinder accepts a Small Format Interchangeable Core (SFIC) A2 key system in a full size Conventional key-in-lever (KIL) or a Full Size Interchangeable Core (FSIC) cylinder format. Buildings on multiple key systems can now be brought into the same restricted key system at a much lower cost than replacing installed lock hardware.¹



¹ SL cylinders are available to fit any mechanical Schlage lockset or deadbolt utilizing Schlage Conventional or FSIC cylinders. Fits electronic ND and L Series locksets along with many competitive manufacturer's lock products.



A look inside the Conventional SL cylinder

Benefits

- Allows one Everest 29 R key system to span three unique cylinder formats: Conventional, FSIC, and SFIC.
- 7-pin design offers four times more keying combinations in a master key system than 6-pin cylinders
- Enables Primus XP exclusivity and physical security features to be introduced into an SFIC based facility
- Locking side bar mechanism improves pick and bump resistance
- Key duplication on standard (basic) key cutting equipment
- SL cylinders fit all Schlage and Falcon® cylindrical locks
- Backward compatible to Everest B keyway families
- Fits an extensive list of competitor's locks

Additional security gained with Primus® XP

	Everest 29 SL	Everest 29 SL Primus XP
Patented until 2029	■	■
Check pin and single side bar	■	—
Utilizes 2 independent sidebars	—	■
Maximum key duplication restrictions	—	■
Uses pin kit # 40-247	■	■
Levels 7-9 geographic exclusivity	—	■
Electronic validation available	■	■

Finish options

Color	Bright brass (605)	Satin brass (606)	Antique brass (609)	Satin bronze (612)	Oil rubbed bronze (613)	Satin nickel (619)	Matte black (622)	Bright chrome (625)	Satin chrome (626)	Bright stainless steel (629)	Satin stainless steel (630)	Aged bronze (643e)
Plug face	—	■	—	—	—	—	■	—	■	—	—	■
Mortise and RIM housings	—	■	■	■	■	■	■	■	■	■	■	■

Allegion, the Allegion logo, Everest 29, Primus, Schlage, and the Schlage logo are trademarks of Allegion plc, its subsidiaries and/or affiliates in the United States and other countries. All other trademarks are the property of their respective owners.

About Allegion

Allegion (NYSE: ALLE) is a global pioneer in safety and security, with leading brands like CISA®, Interflex®, LCN®, Schlage®, SimonsVoss® and Von Duprin®. Focusing on security around the door and adjacent areas, Allegion produces a range of solutions for homes, businesses, schools and other institutions. Allegion is a \$2 billion company, with products sold in almost 130 countries. For more, visit www.allegion.com.

KRYPTONITE ■ LCN ■  ■ STEELCRAFT ■ VON DUPRIN



© 2019 Allegion
01118, Rev. 06/19
www.allegion.com/us