

# Know It's Locked.™

## Schlage Mortise, Cylindrical & Deadbolt Indication Trims



### Overview

Lock status indication is about safety and/or privacy. A classroom door that is visibly locked when seen from any angle in sight of the door, even at a distance can help students and teachers feel confident and secure. In restaurant settings, it can reduce patron time spent away from the table. In health care, it can inform staff of a patient's location when out of bed and give the patient a greater sense of privacy.

Whether the need is for privacy on dressing rooms, mother's lactation rooms, or restroom doors or, more importantly, for security—to know it's locked when seconds count is a benefit made possible on multiple functions for L, ND and B Series Schlage locks.



### Features & Benefits

- Largest available windows for these lock types in the Grade 1 commercial market
- Windows and mechanism made to be tamper-resistant
- Patented, 180-degree visibility
- Red and white backgrounds serve color-blind needs
- Extensive functional options
- Durable, best-in-class products

#### Applications

##### K-12:

- Classroom, adjoining room, lab and study room doors
- Administrative offices
- Faculty and nurse's office restroom doors
- Individual restroom and shower room doors

##### Higher Education:

- Applications similar to K-12
- Study pods and rehearsal rooms
- Faculty offices

##### Commercial Real Estate:

- Public restrooms
- Mother's lactation rooms
- Rooms requiring temporary closures due to cleaning or stocking

##### Healthcare:

- Patient bathrooms and dressing rooms
- Public restrooms
- Physician sleeping/on call rooms
- Radiology or other therapy rooms

##### Retail:

- Restaurant single use restrooms
- Dressing rooms

# L Series Indicator Key Features

- Available in 36 functions:
  - 24 L9000 mortise locks in a wide range of functions
  - Four large and five small case deadbolts
  - Three LM9300 multi-latch
- 27 functions available with dual indication as well as single-sided
- Orderable in all L Series finish and lever options
- Compatible with all L key cylinder options
- Retrofit kits available in any finish
- Carries the same UL 10C fire-rating and certifications of a standard Grade 1 L Series lock
- To view all functions and specification details see [L Series catalog](#) or [L Series](#) and [LM9300 Series](#) cut sheets

## Inside Trims



Thumbturn

Key cylinder

## Outside Trims



Emergency key

Coin turn

Key cylinder

### Available Indicator Messages

	LOCKED	OCCUPIED	DO NOT DISTURB	UNLOCKED
	UNLOCKED	VACANT		
Inside trim	IS-LOC	IS-OCC	IS-DND	IS-SYM
Outside trim	OS-LOC	OS-OCC	OS-DND	OS-SYM
Inside trim (Française)	IS-LOCFR	IS-OCCFR	-	-
Outside trim (Française)	OS-LOCFR	OS-OCCFR	-	-

### Dimensions

	Width	Height
Escutcheon	2.6"	9.7"
Sectional	2.6"	6.1"
Main window	2"	0.6"
Side windows	0.3"	0.6"

Note: Spanish language options available via Special Product Request (RFQ).

## L Series Ordering Instructions

To order, descriptive data should be in the same sequence as shown.

Required for all lock orders		Without specification, defaults will apply.																									
Brand	Series + Function	Cylinder type (keyed functions only)	Outside only			Inside only			Strike	Door dimensions			Lock monitoring			Options					Keying						
			Outside lever/knob design	Outside rose/escutcheon	Outside finish	Inside lever/knob design	Inside rose/escutcheon	Inside finish		Handing	Armor front	Door thickness	Extended	Strike lip length	Request to Exit (RX)	Latchbolt monitor (LX)	Door position sensor (DPS)	Deadbolt monitor (DM)	Indicator	Basic or large ADA thumbturn	Screw option	Lead lining	Special options (X numbers)	Buy American Act compliant	Keying code	Keyway	Pack keys independently
1	2	3	4A	4B	4C	5A	5B	5C	6	7	8	9A	9B	9C	10A	10B	10C	10D	11A	11B	11C	11D	11E	11F	12A	12B	12C
SCH	L9056	R	06	A	626				LH	09-669		1-3/8							OS-DND								T123

**Example when written:** SCH.L9056.R.06.A.626.LH.09-669.1-3/8.OS-DND.R123 OS = outside indication | DND = Do Not Disturb

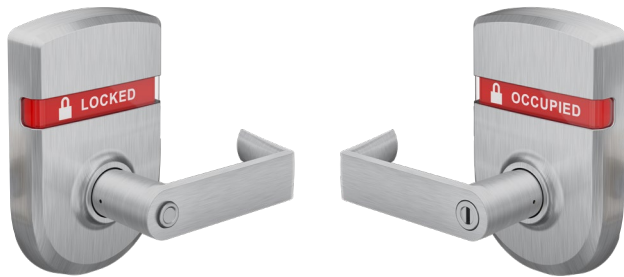
**When ordering dual indication specify both messages. Example:** SCH.L9056.R.06.A.626.LH.09-669.1-3/8.OS-DND.ISLOC.R123

# ND Series Indicator Key Features

- Available in eight standard functions:
  - Two privacy
  - Three security each with a Vandlgard functional option
  - Additional functions available as special requests - check with your Allegion representative to learn more
- Single-sided indication trim is specific to function type
- Orderable in all ND Series finish and lever options
- Compatible with all ND key cylinder options
- Escutcheon trim design fits standard 1-3/4" door
- Spacer kits allow for additional door widths ranging from 1-3/8" to 1-11/16"
- Retrofit kits available for any ND Series lever style
- Carries the same UL 10C fire-rating and certifications of a standard Grade 1 ND Series lock
- To view all functions and specification details see [ND Series catalog](#) or [cut sheet](#)

## Inside Trim

## Outside Trim



ND Series Cylindrical		
Function	Inside	Outside
ND40 Bath/Bedroom Privacy Lock		●
ND44 Hospital Privacy Lock		●
ND50 Entrance/Office and ND91 Entrance/Office Lock with Vandlgard	●	
ND53 Entrance and ND92 Entrance Lock with Vandlgard	●	
ND78 Classroom Security and ND98 Classroom Security Lock with Vandlgard	●	

	Standard messages		ND78/ND98 message
	UNLOCKED	VACANT	UNLOCKED To lock, turn key 1:  then
	LOCKED	OCCUPIED	LOCKED 2:  then, 3: Remove key
Inside trim	IS-LOC	IS-OCC	IS-CRS
Outside trim	OS-LOC	OS-OCC	-
Inside trim (Française)	IS-LOCFR	IS-OCCFR	IS-CRSFR
Outside trim (Française)	OS-LOCFR	OS-OCCFR	-

Note: Spanish language options available via Special Product Request (RFQ).

Indicator Dimensions		
Trim	Width	Projection
Escutcheon	3.66"	0.95"
Window (surface area)	1.92 sq. in.	0.22 sq. in.

## ND Series Ordering Instructions

To order, descriptive data should be in the same sequence as shown.

Required for all lock orders			Without specification, defaults will apply.																							
Brand	Series + Function	Cylinder type (keyed functions only)	Outside only			Inside only			Handing (HSLR or indication trims)	Latch	Strike	Door dimensions			Options							Keying				
			Outside lever design	Outside rose design	Outside finish	Inside lever design	Inside rose design	Inside finish				Door thickness	Extended	Strike lip length	Latch extension	Box for ANSI strike	Pack cylinders loose (PLC)	Trim options	Breakaway Rhodes lever	Special options	Screw option	Request to Exit (RX)	Buy American Act compliant	Keying code	Keyway	Pack keys independently
1	2	3	4A	4B	4C	5A	5B	5C	6	7	8	9A	9B	9C	10A	10B	10C	10D	10E	10F	10G	10H	10I	11A	11B	11C
SCH	ND78	R	RHO		626					14-047		1-3/8						IS-LOC					BAA		S123	

**Example when written:** SCH.ND78.R.RHO.626.14-047.1-3/8.IS-LOC.BAA.S123 **IS** = inside indication | **LOC** = locked

When ordering door thickness less than 1-3/4" a sold separate spacer kit will be required.

# B Series Indicator Key Features

- Available in 6 functions: two privacy and four security
- Available with dual indication as well as single-sided
- Sold as Grade 1 B600 and Grade 2 B500 Series locks
- Orderable in all B Series finish options
- Compatible with all B Series key cylinder options
- Escutcheon trim design fits standard door ranges of 1-3/8" to 1-7/8" for conventional cylinders and 1-5/8" to 2" for interchangeable cores
- Carries the same UL 10C fire-rating and certifications of a standard B Series lock
- To view all functions and specification details see [B600 Series](#) or [B500 Series](#) cut sheets

## Inside Trim



Thumbturn



Key cylinder

## Outside Trim



Coin turn



Key cylinder

### Grade 1 B600 & Grade 2 B500 Series Deadbolts

Function	Inside	Outside	Dual
Door Bolt with Coin Turn	•	•	•
Door Bolt with Trim <sup>1</sup>	•		
Single Cylinder Deadbolt	•	•	•
Cylinder x Blank Plate Deadbolt	•	•	•
Double Cylinder Deadbolt	•	•	•
Classroom Deadbolt	• <sup>2</sup>	•	• <sup>2</sup>

1. Door bolt with trim function available in B500 Series only.
2. Classroom deadbolt with inside or dual requires Special Product Request (RFQ).

## B Series Ordering Instructions

To order, descriptive data should be in the same sequence as shown.

Required for all lock orders		Without specification, defaults will apply.												
Brand	Series + Function (+ F if B500 fire-rated option is desired)	Cylinder type (keyed functions only)	Outside finish	Inside finish	Deadbolt	Strike	Door thickness	Options				Keying		
1	2	3	4	5	6	7	8	9A	9B	9C	9D	10A	10B	10C
SCH	B560F	R	626	12-249			1-5/8	OS-LOC						S123

Example when written: SCH.B560F.R.626.12-249.1-5/8.OS-LOC.S123

### Available Indicator Messages

	LOCKED	OCCUPIED
	UNLOCKED	VACANT
Inside trim	IS-LOC	IS-OCC
Outside trim	OS-LOC	OS-OCC
Inside trim (Française)	IS-LOCFR	IS-OCCFR
Outside trim (Française)	OS-LOCFR	OS-OCCFR

Note: Spanish language options available via Special Product Request (RFQ).

### Indicator Dimensions

Conventional/FSIC/SFIC	Width	Height
Escutcheon	2.54"	4.125"
Window	2.32"	0.43"

## Finishes



Color	605 Bright Brass	606 Satin Brass	609 Antique Bronze	612 Satin Bronze	613 Oil Rubbed Bronze	619 Satin Nickel	622 Matte Black	625 Bright Chrome	626 Satin Chrome	629 Bright Stainless Steel	630 Satin Stainless Steel	643e Aged Bronze
L Series	•	•	•	•	•	•	•	•	•	•	•	•
ND Series	•	•	•	•	•	•	•	•	•			•
B Series	•	•	•	•	•	•	•	•	•			•

Note: Antimicrobial coating is available over 626 finish on all three series.