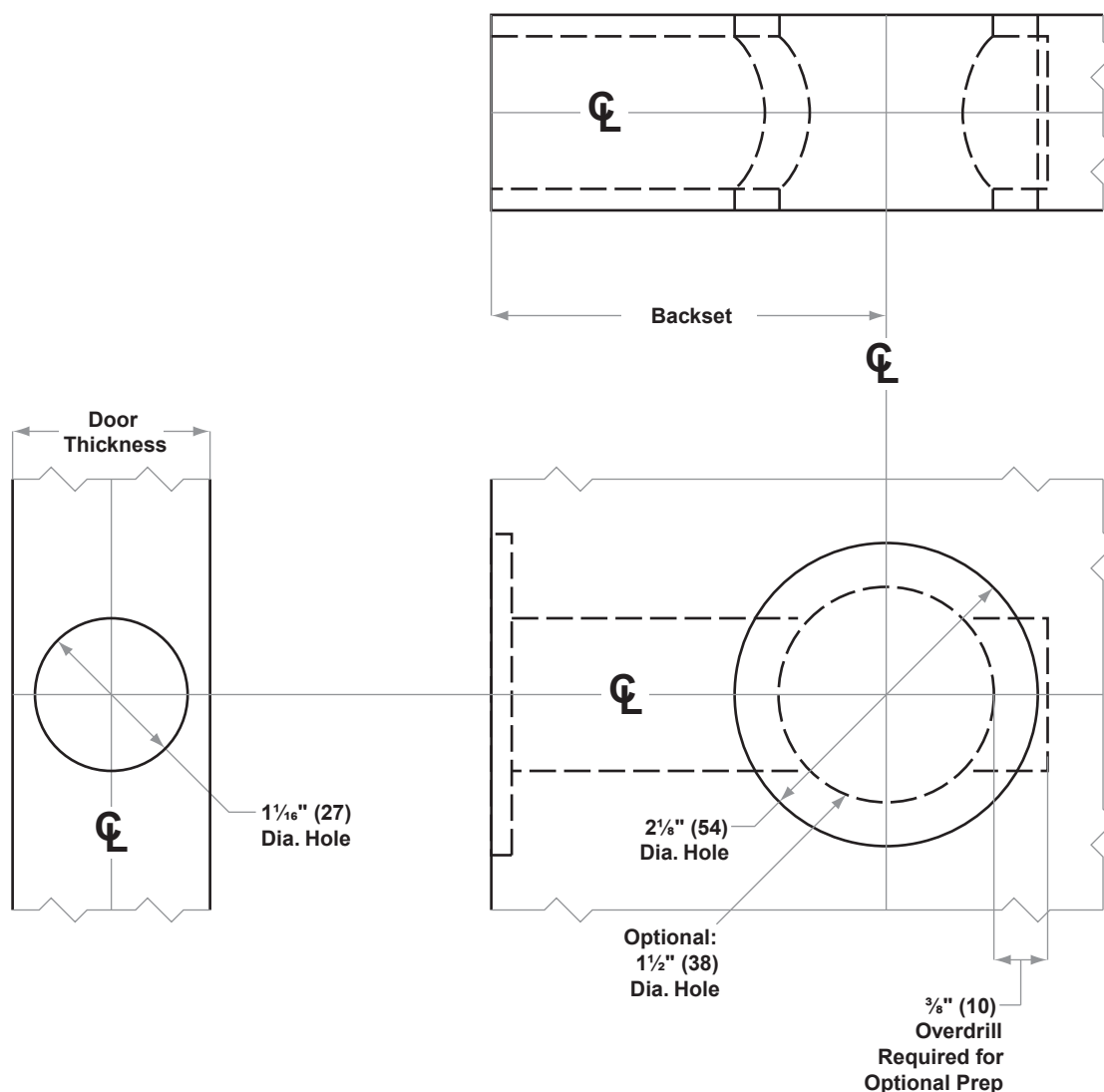




# B600/700/800-Series

Models B660/661/662/663, B760/761/762/763,  
B860/861/862/863

- Door Type: Wood or Composite, Flat
- Door Thickness: 1 $\frac{1}{8}$ " (35 mm)–2 $\frac{1}{2}$ " (64 mm)
- Faceplate: Circular Drive-In
- Backsets: 2 $\frac{3}{8}$ " (60 mm), 2 $\frac{3}{4}$ " (70 mm), 3 $\frac{3}{4}$ " (95 mm), 5" (127 mm)



**2 $\frac{1}{8}$ " bore required with indicator trim**

Dimensions shown in parentheses ( ) are in millimeters.

Door preparation template