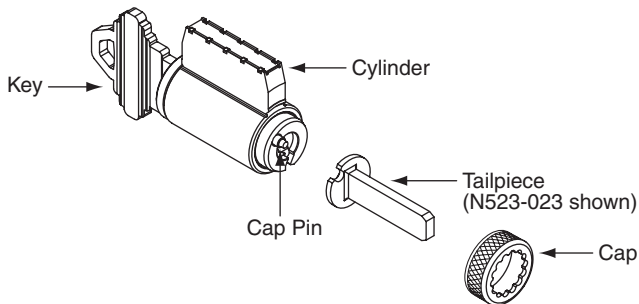


SCHLAGE®

ND-Series Tailpiece Install Sheet

Use this sheet and the included tailpieces to retrofit an existing cylinder with an ND-Series tailpiece.

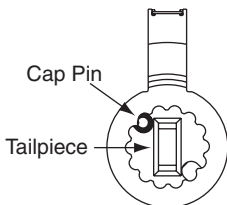


1

Remove Cylinder Cap

- Depress cap pin and rotate cap counterclockwise.
- Remove cap from cylinder.
- Remove existing tailpiece.

View of Back of Cylinder

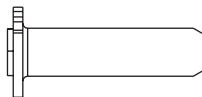


Classic Cylinder Shown

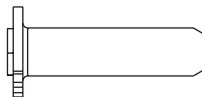
2

Select New Tailpiece

Graphic shown actual size



N523-023 – For ND-Series
Classic Cylinder

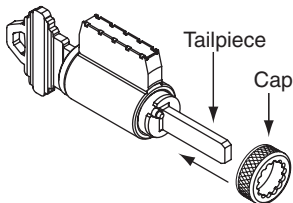


N523-022 – For ND-Series
Everest or Primus Cylinder

3

Install New Tailpiece

- Place new tailpiece (in the vertical position) against back of cylinder.
- Place cap over tailpiece.
- Depress cap pin and rotate cap clockwise until tight.



Classic Cylinder Shown

IMPORTANT

If key does not come out of cylinder easily, cap is too loose.
If key does not turn smoothly in cylinder, cap is too tight.