

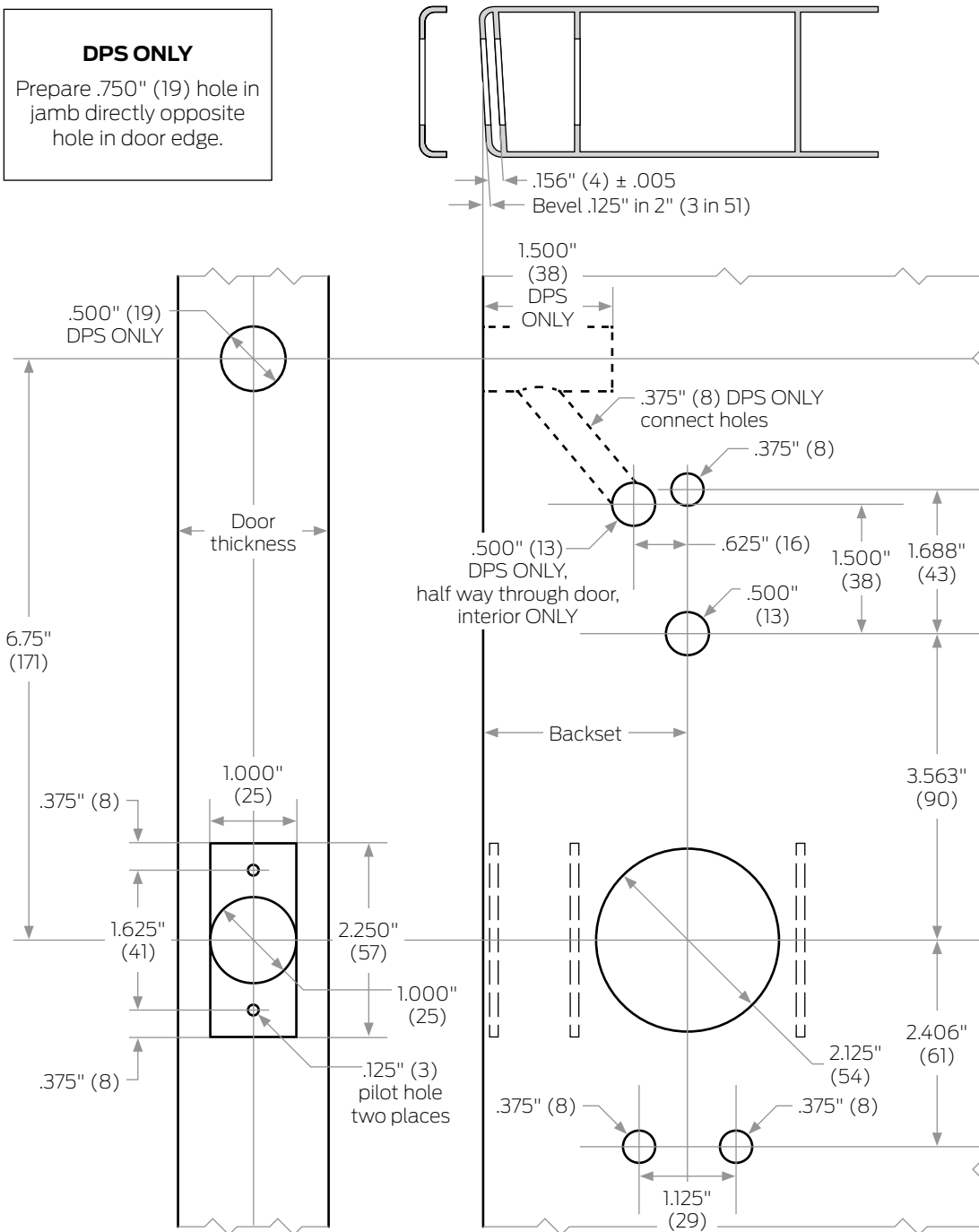


# XE360-Series

## Models XE360-T

- Door Type:** Metal, flat or beveled
- Door Thickness:** 1 3/4" (44 mm)
- Faceplate:** Square Corner, 1" (25 mm) wide
- Backsets:** 2 3/4" (70 mm), 2 3/8" (60 mm)

**DPS ONLY**  
Prepare .750" (19) hole in jamb directly opposite hole in door edge.



Dimensions shown in parentheses ( ) are in millimeters.  
Drawing not to scale.

Door preparation template

# XE102