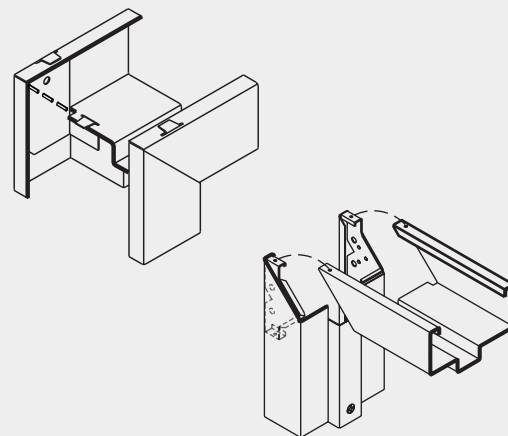


STEELCRAFT®

Frames that
set the industry
standard



Steelcraft manufactures a wide variety of frames in jamb depths for virtually any wall condition or entryway requirement.

Flush frames

Flush (F, FE and FN Series) frames are designed to be installed as part of the wall framing sequence for exterior and interior walls of wood stud, steel stud and masonry construction. Frames are manufactured from 16-, 14- and 12-gauge (F only) commercial-quality carbon steel, A60 galvanized or G90 galvanized steel. Flush frame corners lock together by bending over four integral tabs, and may also be factory welded and ground smooth.

Multiple use frames

Multiple use (MU Series) frames have a jamb profile similar to drywall frames but are designed to be installed as part of the wall framing sequence. MU Series frames are available in 16- or 14-gauge cold-rolled, A60 galvanized or G90 galvanized steel.

Drywall frames

Drywall (DW and K Series) frames are designed to be installed in rough openings after the wall is constructed. They can be installed in minutes and can be relocated without damage to the frame. Drywall frame corners lock together once the frame is assembled. The tab design prohibits the head from raising, and keeps the head and jamb members in the same plane.

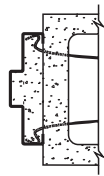
Specifications

Door thickness	1 ³ / ₄ " (45mm)	1 ³ / ₈ " (35mm)
Standard heights	6'8" (2032mm)	7'0" (2134mm)
	7'2" (2184mm)	8'0" (2438mm)
	9'0" (2743mm)	10'0" (3048mm)
Standard widths	Increments of 2" (50mm) from 1'6" (457mm) to 8'0" (2438mm)	

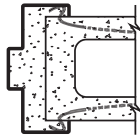
Custom sizes per request.

F and FN Series

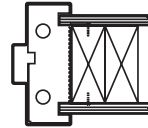
Typical wall conditions and anchors



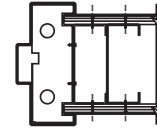
Butted masonry



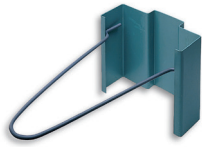
Wrap-around masonry



Wood stud



Closed steel stud wall



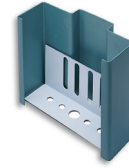
Adjustable wire anchor for masonry



Wood stud anchor



Closed steel stud anchor

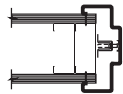


Adjustable base anchor

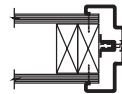
DW and K Series

Typical wall conditions and anchors

Drywall frames are designed for drywall construction using wood studs or steel studs. DW and K Series frames are available in 16- or 14-gauge cold-rolled or A60 galvanized steel.



Steel stud



Wood stud



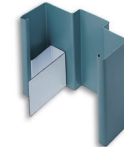
Lock in base anchor – DW Series



Quick and easy base anchor – K Series

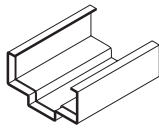


Compression anchor – DW and K Series

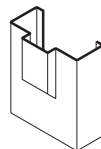


Optional security anchor

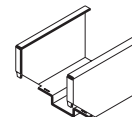
Design options



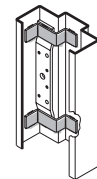
14-gauge closer reinforcing sleeve



Hospital stop
(F, FN, DW, and MU Series only)



4" face head



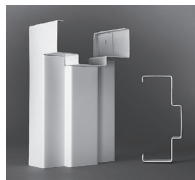
High frequency hinge reinforcement

10-gauge high frequency reinforcement (F, MU, DW and FE Series only)

Frame profiles



DE Series



F Series



FE Series



MU Series



DW Series

Allegion, the Allegion logo, Steelcraft, and the Steelcraft logo are trademarks of Allegion plc, its subsidiaries and/or affiliates in the United States and other countries. All other trademarks are the property of their respective owners.

About Allegion

Allegion (NYSE: ALLE) is a global pioneer in safety and security, with leading brands like CISA®, Interflex®, LCN®, Schlage® and Von Duprin®. Focusing on security around the door and adjacent areas, Allegion produces a range of solutions for homes, businesses, schools and other institutions. Allegion is a \$2 billion company, with products sold in almost 130 countries. For more, visit www.allegion.com.



ALLEGION™