



941006-00

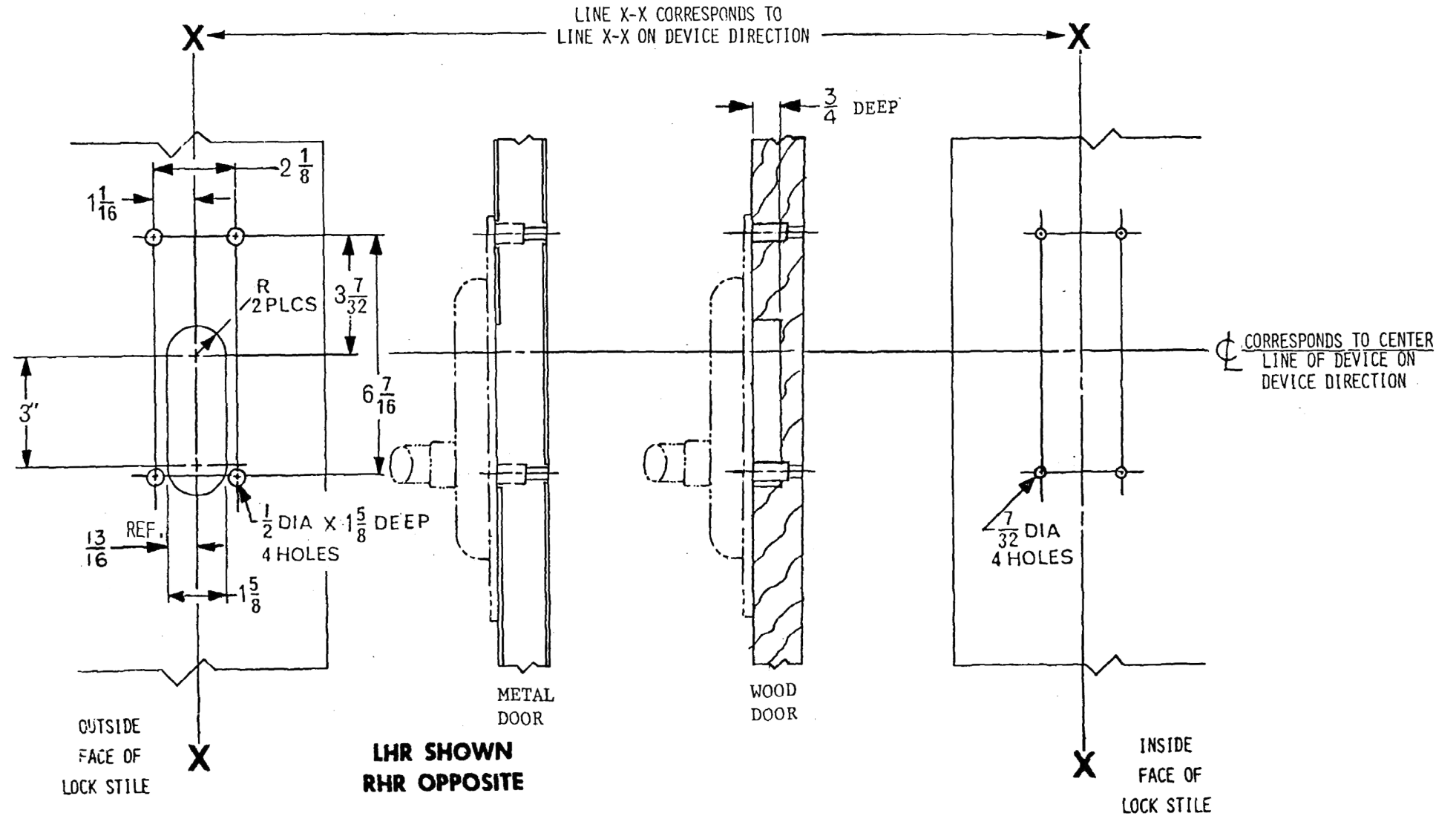
Control Assembly for 88L Device

# 373L & 889 Plate

# VON DUPRIN®

Installation Instructions

1. Assemble 373-L control and 889 control plate per the instructions on reverse side of sheet.
2. Prepare inside face of lock stile for device.
  - A. See device direction for holes, correct backset and location of line X - X.
3. Prepare outside face of lock stile for control plate.
  - A. Transfer line X-X from inside face to outside face of door. Be sure line X-X is parallel to edge of door.
  - B. Locate and prepare all holes as indicated.
4. Apply control plate assy.
5. Apply device.
6. Test key, control & device action.



FOR CUTOUTS ON INSIDE FACE OF DOOR  
SEE DIRECTIONS IN DEVICE CARTON.

**Customer Service**  
 1-877-671-7011    www.allegion.com/us



© Allegion 2014  
Printed in U.S.A.  
941006-00 Rev. 01/14-b

889 CONTROL PLATE AND  
373-L CONTROL ASSEMBLY  
INSTRUCTIONS

1. Remove both hex extensions and set screws from 373-L control.
2. Assemble control, cover plate, and reinforcing plate assy using two 1/4 - 20 X 3/4 lg. F.P.H.M.S.

NOTE: Large end of cutout on reinforcing plate assy must be at the top.

