

CL OF EPT IN FRAME MUST ALIGN WITH CL OF EPT IN DOOR

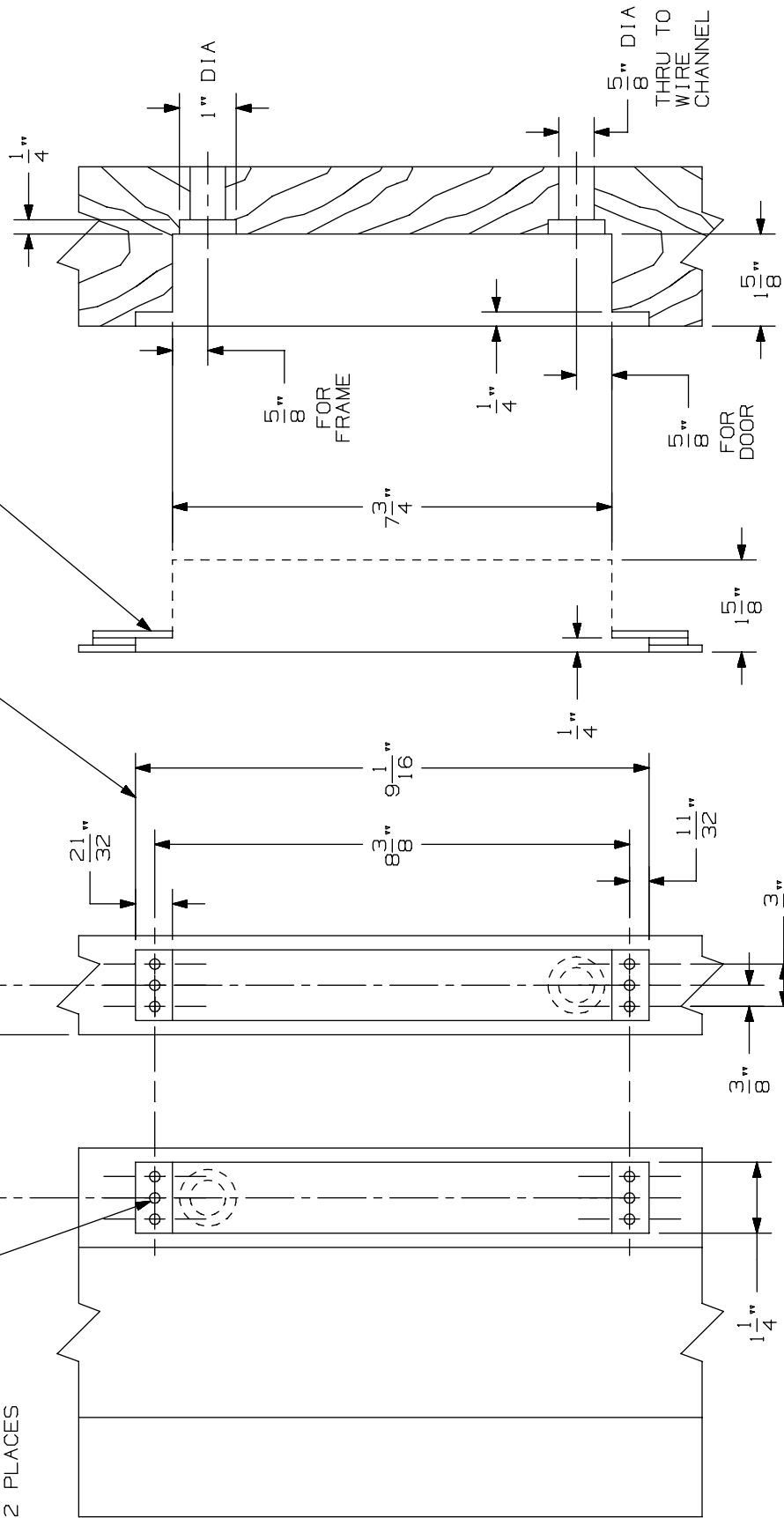
RECOMMENDED 6" BELOW UPPER HINGE ON DOORS UP TO 7'0" HIGH. LOCATE 24" BELOW UPPER HINGE ON DOORS OVER 7'0" TO 10'0" HIGH. NOTE: FOR WOOD FIRE DOORS, CONSULT DOOR MANUFACTURER FOR APPROVED LOCATION.

③

WOOD: HOLES PREPARED DURING INSTALL.
METAL: #10-24 TAPPED HOLE 12 PLACES

WHEN INSTALLED
3 3/4" MAX.
7" FROM OUTSIDE FACE OF DOOR

REINFORCEMENT .060" (16 GA.) MINIMUM



DOOR (OPEN 180°)

METAL DOOR OR FRAME (SIDE VIEW)

WOOD DOOR OR FRAME (SIDE VIEW)

* ALL DIMENSIONS ARE TYPICAL

Power Transfer Unit EPT2, EPT10, & PNT1

VON DUPRIN®

NOTES: SEE MASTER SHEET #10001 FOR SUGGESTED REINFORCING

TEMPLATE NUMBER:

W40250_a

DATE:
05-29-13